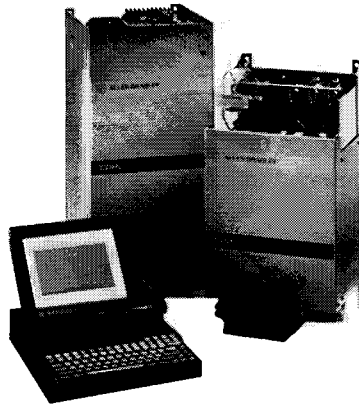




**ALLEN-BRADLEY**

## **Allen-Bradley Intelligent Terminal System**

### Product Data



**The TROUBLE just went out of Maintaining, Configuring and Troubleshooting your Digital Drive with the Introduction of the Allen-Bradley ITS Software package.** The Intelligent Terminal System (ITS) is a personal computer based, IBM® compatible software package designed to aid the configuring, troubleshooting and maintenance of Allen-Bradley Digital Drives. ITS is capable of both off-line and on-line programming, which simplifies start-up, expands configuration options and also assists in collecting drive data and monitoring fault information.

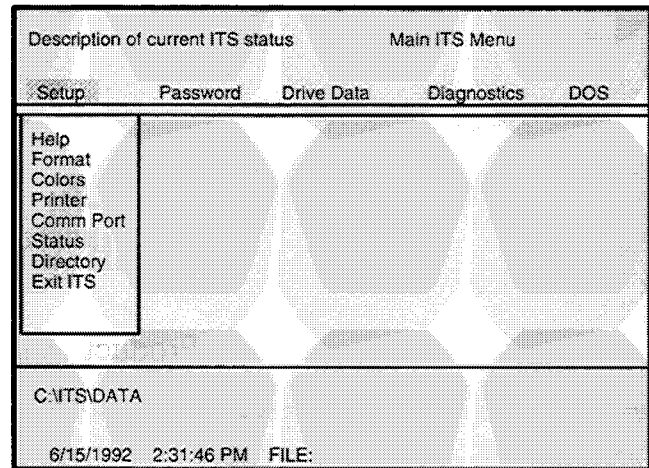
**The ITS program supports both the 1336 AC Drive and the 1395\* DC Drive.** Pull down menus provide easy access to software tools, with a main ITS menu supplying both drive information and ITS status at a glance. Both On-line and Off-line programming are provided for, and on screen parameter table access allows either parameter table editing or configuration table editing. Special function keys allow for instant display of fault diagnostics and real time monitor data in addition to allowing you to search for specified information in a parameter table. With ITS, separate drives in a multi-drive system can be isolated for analysis and a diagnostics trending screen allows you to display and save trend buffer values. Connection to your drive is easily accomplished in a two-step process using an ITS converter. With ITS capable of running on most IBM-PC® compatible systems, it allows most MS-DOS® functions to be supported. MS-DOS can even be accessed without leaving ITS. Password protection offers additional security, through controlled user access.

\*Also compatible with 1396 Drives

Allen-Bradley Spares

## Main ITS Menu

The main ITS menu provides a look at all the basic choices that are available to the user. Using the main menu you can set-up ITS, alter or enter passwords, edit drive date, monitor parameters or perform basic DOS file functions. When a menu selection is made, a pull down menu of additional choices will appear. At the top of the screen is shown a brief description of your highlighted function, and an abbreviated menu path.



The two lines at the bottom of the screen are reserved for status information on the DOS path, information on special function keys, program status and the time and date.

## Parameter Table Screen

The parameter table screen displays a list of Drive parameters. For each parameter displayed, a complete readout of the parameter name, number, current value, engineering units, minimum and maximum values, internal drive value and the default value is provided. Special function keys allow you to perform searches in the parameter table for specific information and also to switch between the parameter table and the configuration table.

File	Table	Parameter				
1336 2.01 Digital AC		DA123456				
Num	Value	Parameter Name	Intern	Init	Min.	Max.
1	OVLT	Output Volts	0	Not	Changeable	
2	0%	Output Current	0	Not	Changeable	
3	0%	Output Power	0	Not	Changeable	
4	0	Last Fault	0	Not	Changeable	
5	0	Freq Select 1	0	0	0	5
6	0	Freq Select 2	0	0	0	5
7	5.0 SEC	Accel Time 1	500	5.00	0.00	600.00
8	5.0 SEC	Accel Time 2	500	5.00	0.00	600.00

Cursor control keys allow you to access the complete parameter table by scrolling through the table.

## Drive Convert Screen

The Drive Convert function allows you to convert a drive data base to a different firmware level or hardware combination. For example, if you want to add a new adapter to an existing drive this function will make the necessary parameter modifications.

File	Table	Parameter	
1395 5.0	Drive Convert:	Current Setup Desired Setup	
		Firmware Firmware	
		Type Version Type Version	
606	Main Control Bd:	1395 5.01 1395 5.01	
607	Adapter Port A:	DISC 3.01 DIG 1.02	
608	Adapter Port B:	NODE 3.01 MCAB 1.02	
609	Use: On Line Drive Parameter Value: [x]		
610	Parameter Values from Disk File: [ ]		
611	File: Test 9501		
612	Path: C:\ITS\USERDATA\		
613	Accept Changes (Y/N)?		
	Press ALT + I to view selections		
	Press ENTER to accept changes		
	Press ESCape to Exit function:		

**Parameter Monitor Screen**

This screen allows you to display up to 10 different parameters whose values are continuously being updated on a real time basis. Setup parameters can be edited or new parameters can be entered, at the same time critical parameters are being monitored. Parameters are displayed in tabular format. Current values, internal units (in both hex and decimal) and names are shown. Depending on the number of parameters being monitored, the parameter values can be updated as often as 6 to 10 times every second.

Drive \ Data \ Edit

File	Table	Parameter
1395 5.01		
Num	Parameter Monitor Display:	
606	Num	Value Parameter Name Intern Hex
607	106	0 RPM Vel Fdbk 1746 06D2
608	111	0 AMP Arm Current Ref 0 0000
609	112	0 AMP Arm Current Fdbk 0 0000
610	117	0 AMP Fid Current Ref 1365 0555
611	118	0 AMP Fid Current Fdbk 0 0000
612	105	0 VLT Arm Voltage Fdbk 873 0369
613	116	0 VLT AC Line Voltage 0 0000
614	Press ESCape to Exit function	

C:\ITS... Search... Help

6/15/1992 3:27:01 PM FILE: SAMPLE Conf On-Line Key

**Bit Monitor Screen**

The Bit Monitor feature displays a user friendly view of parameters that are bit coded. Each bit is shown along with its associated description and present value. It is no longer necessary to constantly refer to an instruction manual to determine what the function of each parameter bit performs.

Diagnostics \ Monitor

Logic Cmd	LogicStat	Bit Monitor	Table
150 Logic Cmd 1		100 Logic Status	
BIT	Meaning	BIT	Meaning
0 0	Run Reference Select A	0 0	Fault Field 0
1 0	Run Reference Select B	1 0	Fault Field 1
2 0	Run Reference Select C	2 0	Logic Cmd 0
3 0	MOP Increment	3 0	Logic Cmd 1
4 0	MOP Decrement	4 0	Contactors Closed
5 0	Ramp Disable	5 0	Drive Running
6 0	MOP Rate 1	6 0	Running Reverse
7 0	MOP Rate 2	7 0	Ready
8 0	Command Enable	8 0	At Current Level
9 0	Jog 2	9 0	At Set Speed
Press ESCape to Exit function			

6/15/1992 3:27:01 PM FILE: SAMPLE Conf On-Line Key

**Parameter Help**

An instruction manual in a program. ITS contains context sensitive help about program functions and drive parameters. Simply highlight the item in question and press the F10 key, ITS will display additional information.

Drive \ Data \ Edit

File	Table	Parameter
610	_Rated Motor Voltage [Rated Motor Volt]	
Internal Units: volts x 10		
Engineering Units: VOLTS		
Minimum Value: 75		
Maximum Value: 500		
Default Value: 240		
Description: Nameplate rated motor voltage. This should be the measured armature voltage when the motor is running at base speed with rated field current.		
C:\ITS\DATA	F3 - Clear	F4 - Switch
6/06/1992 3:45:01 PM FILE: DEMO 1395 Parm OnLine Log		

## Hardware Requirements

- IBM PC®, XT®, AT®, or 100% compatible machine.
- Color or Monochrome display.
- CGA, EGA, VGA or monochrome video adapter card.
- ITS is available on 720K 3 1/2" microfloppies, and 1.2 meg 5 1/4" floppies.
- 1 RS-232 Serial Port available for use by ITS.
- 400K Ram & 2 MEG Storage

## Catalog Numbers

Bulletin #	Item Description
1300 – ITS	1336/1395 <sup>1</sup> Combined Software and Signal Converter
1300 – ITSSO	1336/1395 <sup>1</sup> Software Only
1300 – ITSSC	1336/1395 <sup>1</sup> Signal Converter Only
1300 – ITSSOS	1336/1395 <sup>1</sup> Software Registration Renewal
1300 – ITSSOR	1336/1395 <sup>1</sup> Software Registration Reinstatement
1300 – ITSSL	1336/1395 <sup>1</sup> Site License Agreement <sup>2</sup>

<sup>1</sup> Also Compatible with 1396 Drive

<sup>2</sup> Site License agreements available for quantities of 10 or above.

IBM XT®, AT®, and PC®, are Trademarks of International Business Machines Corporation  
MS-DOS® is a registered trademark of Microsoft Corporation.



Allen-Bradley has been helping its customers improve productivity and quality for 90 years. Allen-Bradley designs, manufactures and supports a broad range of control and automation products worldwide. They include logic processors, power and motion control devices, man-machine interfaces and sensors. Allen-Bradley is a subsidiary of Rockwell International, one of the world's leading technology companies.

With offices in major cities worldwide.

### WORLD HEADQUARTERS

Allen-Bradley  
1201 South Second Street  
Milwaukee, WI 53204 USA  
Tel: (1) 414 382-2000  
Telex: 43 11 016  
Fax: (1) 414 382-4444

### EUROPE/MIDDLE EAST/ AFRICA HEADQUARTERS

Allen-Bradley Europe B.V.  
Amsterdamseweg 15  
1422 AC Uithoorn  
The Netherlands  
Tel: (31) 2975/43500  
Telex: (844) 18042  
Fax: (31) 2975/60222

### ASIA/PACIFIC HEADQUARTERS

Allen-Bradley (Hong Kong) Limited  
Room 1006, Block B, Sea View Estate  
2-8 Watson Road  
Hong Kong  
Tel: (852) 887-4788  
Telex: (780) 64347  
Fax: (852) 510-9436

### CANADA HEADQUARTERS

Allen-Bradley Canada Limited  
135 Dundas Street  
Cambridge, Ontario N1R 5X1  
Canada  
Tel: (1) 519 623-1810  
Fax: (1) 519 623-8930

### LATIN AMERICA HEADQUARTERS

Allen-Bradley  
1201 South Second Street  
Milwaukee, WI 53204 USA  
Tel: (1) 414 382-2000  
Telex: 43 11 016  
Fax: (1) 414 382-2400