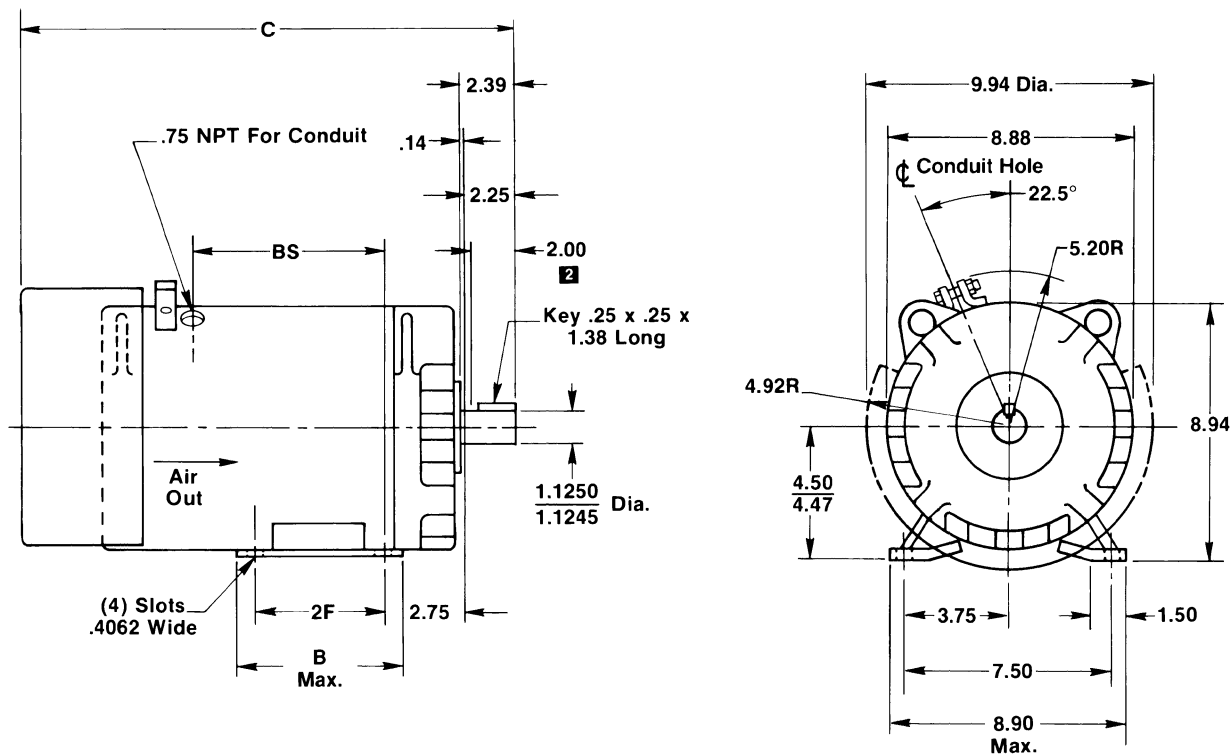




# DC MOTORS TOTALLY ENCLOSED FAN COOLED

## TYPE G



Dimension Ref. No.	Frame	Dimensions <b>1</b>				Approx. Net Wt.
		B	C	2F	BS	
G20	L182AT	5.80	17.45	4.50	6.63	83 Lbs.
G21	186AT	8.30	18.95	7.00	8.13	105 Lbs.
G22	L186AT	8.30	20.95	7.00	10.13	131 Lbs.
G23	189AT	11.56	22.95	10.00	12.13	165 Lbs.

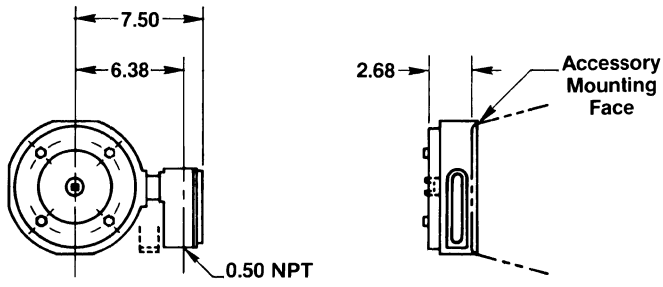
**1** All dimensions in inches. Dimensions and weights are for **estimating** only unless endorsed for construction.

**2** Represents minimum shaft length available for hubs.

# ACCESSORIES <sup>1 2</sup>

---

## AN STYLE AC TACHOMETER



**Approx. Net**  
Weight: 15 Lbs.

- 1** All dimensions in inches. Dimensions and weights are for **estimating** only unless endorsed for construction.
- 2** DC style tachs are not available on these motors due to the endshield construction.

