



1329I Integrated Drive/Motor CE Filter Option Kit

CE filter options are designed to be used with the 1329I Integrated Drive/Motor. The main function of the CE filter is to reduce the radio frequency conducted emissions into the main supply lines and ground wiring. This publication provides the steps needed to install the filter.

Important: Declarations of Conformity to the European Union Directives are available for Allen-Bradley AC drive products. Please contact your Allen-Bradley Sales Representative.



ATTENTION: The CE filter connects between the incoming AC supply line and the drive input terminals. The filter must be installed by qualified personnel familiar with the drive and associated machinery. Failure to comply may result in personal injury and/or equipment damage.



ATTENTION: An incorrectly applied or installed CE filter can result in component damage or a reduction in product life. Wiring or application errors, such as incorrect wiring layout, incorrect or inadequate AC supply or excessive ambient temperatures may result in malfunction of the system.

Refer to the page listed below for installation instructions.

- Internal Mount Option – See page 2.
- NEMA 12 Enclosed Option – See page 5.

Internal Mount Installation

Use the cross-reference table below to verify that the correct filter has been selected for your CE compatible drive.

Filter Selection

Filter Catalog Number	Series	Ratings	Use with Bulletin 1329I Series B Drive/Motor
1329I-NLF1	A	115/230 VAC Single Phase 14 Amps	1329I-BJ 1329I-BK
1329I-NLF3	A	230/460 VAC Three Phase 9 Amps	1329I-BL 1329I-BM

Components Supplied

Item	Quantity Supplied	Quantity Required to Install
Screws M4 × 8 TT	5	4
Lock Washers M4 Internal Tooth	5	4

Filter Installation

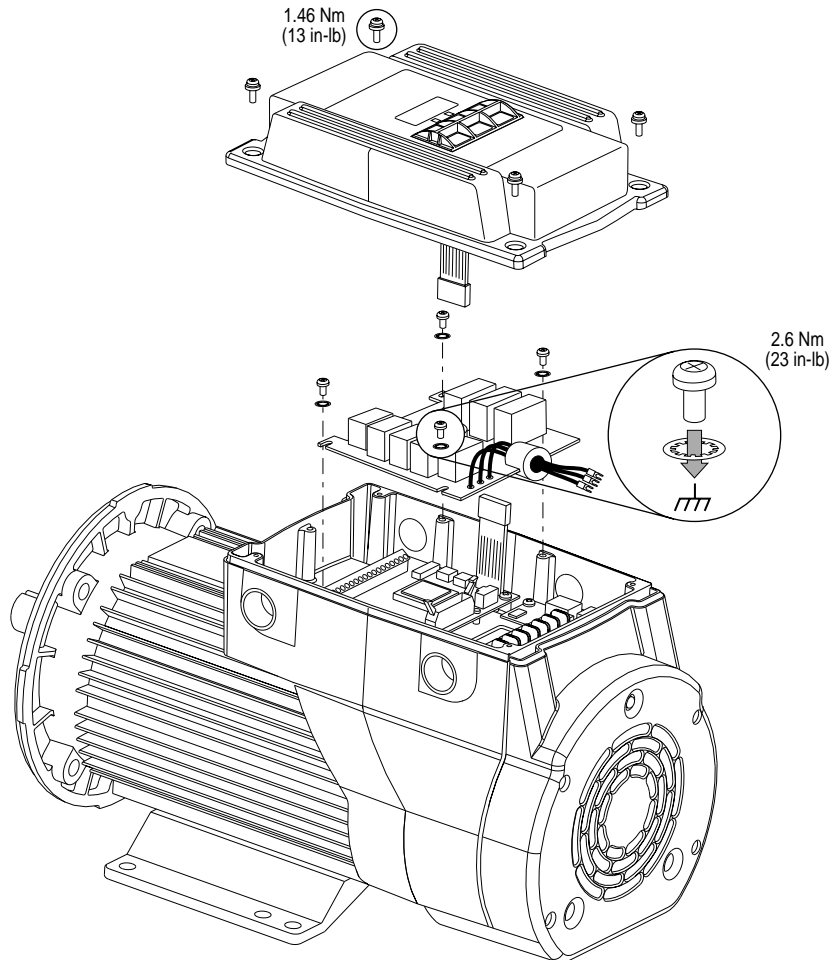


ATTENTION: To prevent electrical shock, disconnect the power source before installing or servicing.



ATTENTION: After disconnecting input power wait five minutes and check with voltmeter to assure that DC bus capacitors are discharged (DC+, DC-). The voltmeter should read zero volts. Failure to observe these precautions could result in severe bodily injury or loss of life.

1. Remove the cover of the 1329I unit by loosening the four cover screws. The display ribbon cable is designed to disconnect from the main unit when the cover is removed.
2. Mount the CE filter as shown in the figure below using the screws provided.



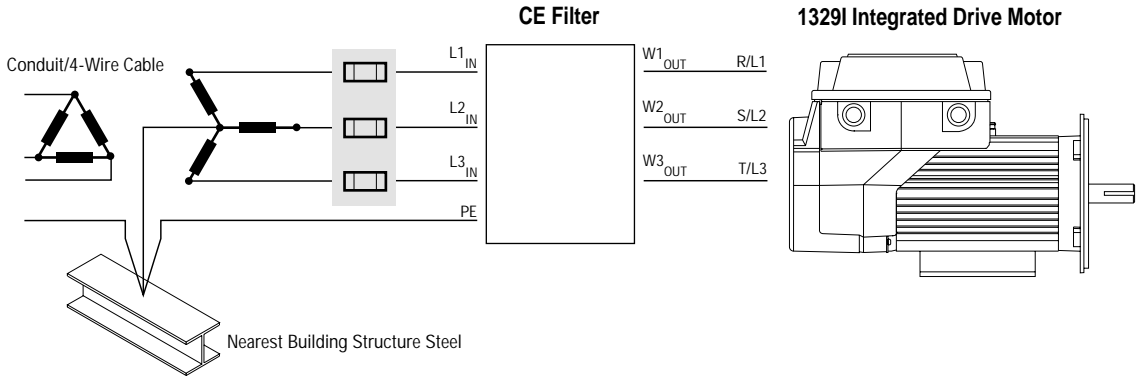
3. The CE filter must be connected between the incoming AC supply line and the drive input terminals.

Important: The filter may cause ground leakage currents. Therefore, a solid ground connection must be provided as shown on the following page.

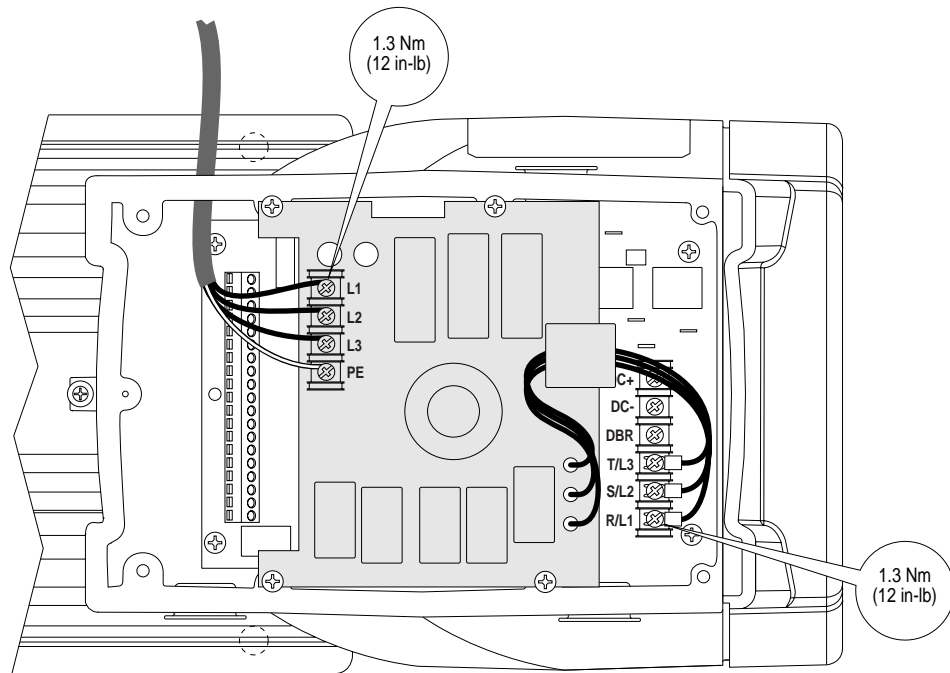


ATTENTION: To guard against possible equipment damage, RFI filters can only be used with AC supplies that are nominally balanced with respect to ground. In some installations, three-phase supplies are occasionally connected in a 3-wire configuration with one phase grounded (Grounded Delta). The filter must not be used in Grounded Delta supplies.

Filter Wiring



4. Connect wires as shown in the diagram below. (Three Phase unit shown.)



5. Reconnect display ribbon cable and reinstall cover.



ATTENTION: The cover screws must be securely tightened in order to properly ground the cover. Verify that all four cover screws are tight before applying power to the unit. Failure to observe this precaution could result in severe bodily injury or loss of life.

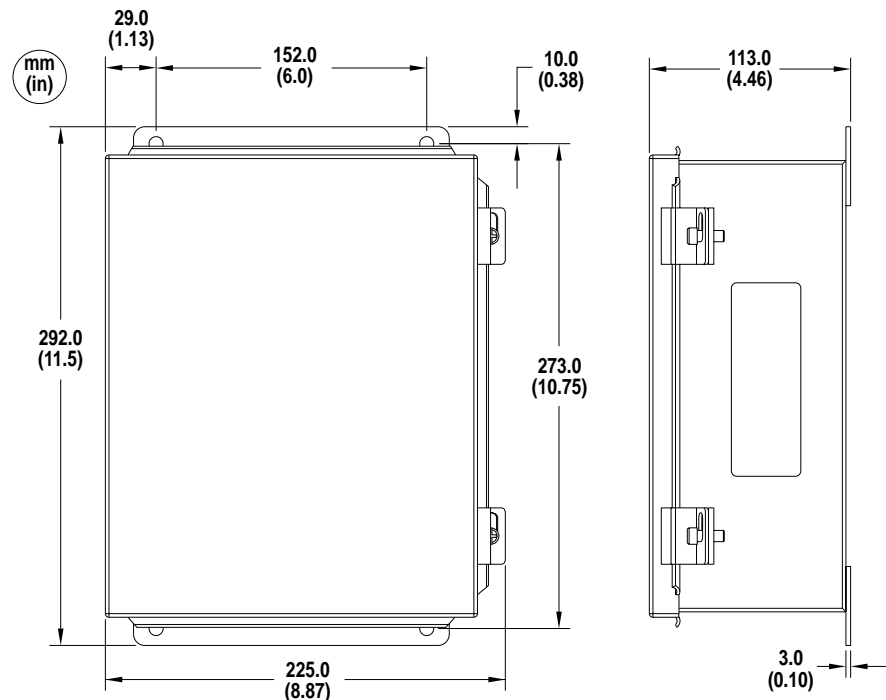
NEMA 12 Enclosed Installation

Use the cross-reference table below to verify that the correct filter has been selected for your CE compatible drive.

Filter Selection

Filter Catalog Number	Series	Ratings	Use with Bulletin 1329I Series B Drive/Motor
1329I-JLF1	A	115/230 VAC Single Phase 14 Amps	1329I-BJ 1329I-BK
1329I-JLF3	A	230/460 VAC Three Phase 9 Amps	1329I-BL 1329I-BM

Filter Enclosure Dimensions



Allen-Bradley PLCs

Filter Installation



ATTENTION: To prevent electrical shock, disconnect the power source before installing or servicing.



ATTENTION: The National Codes and standards (NEC, VDE, BSI, etc.) and local codes outline provisions for safely installing electrical equipment. Installation must comply with specifications regarding wire types, conductor sizes, branch circuit protection, and disconnect devices. Failure to do so may result in personal injury and/or equipment damage.

1. Mount the NEMA 12 Enclosed CE filter.

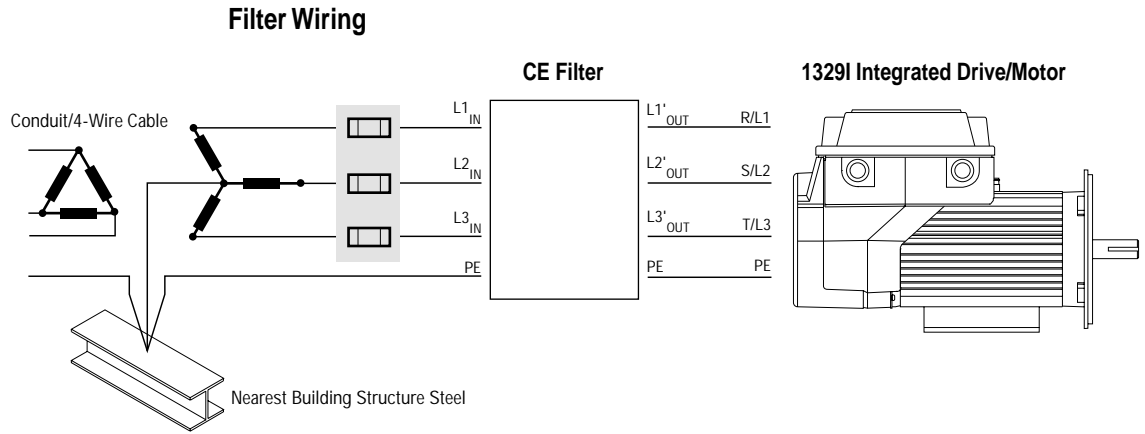
The cable length from the filter to the drive/motor must be less than 3 meters (10 feet).

2. The RFI filter must be connected between the incoming AC supply line and the drive input terminals.

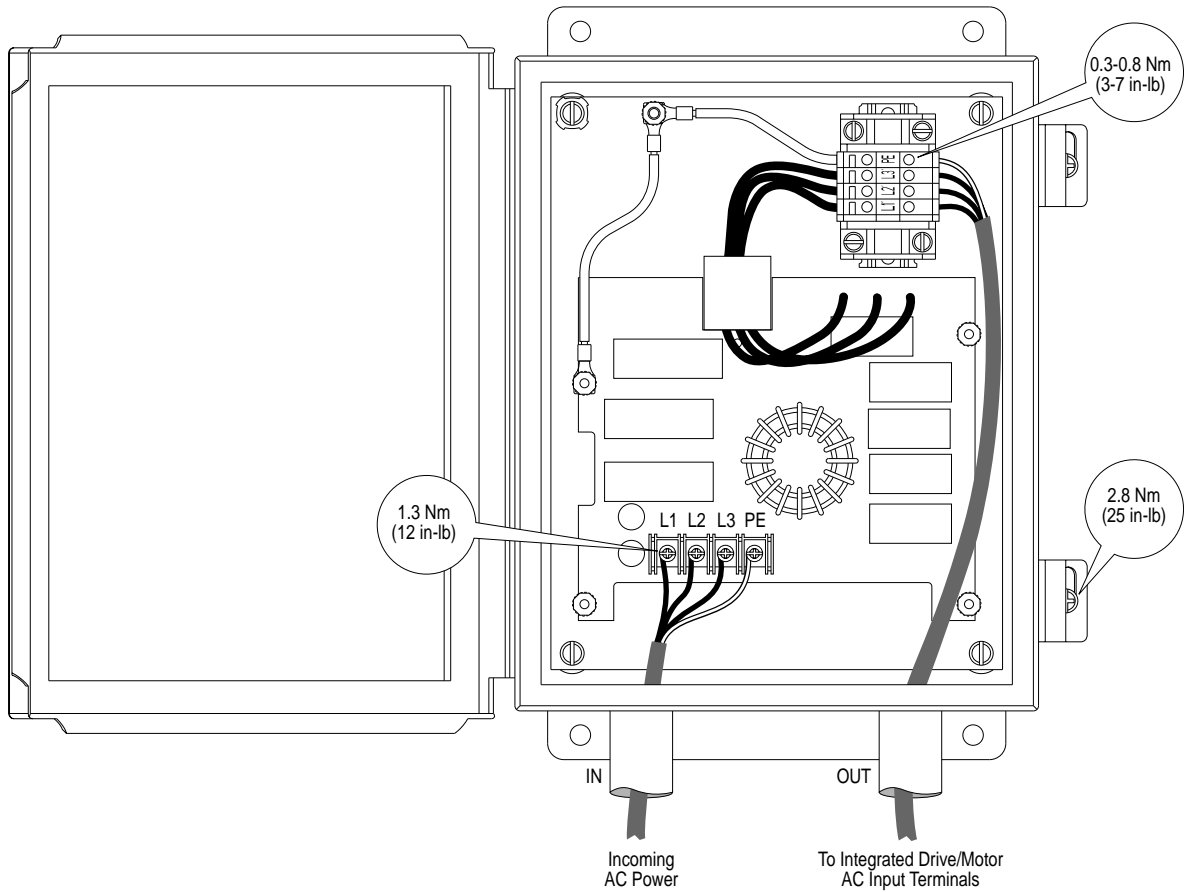
Important: The filter may cause ground leakage currents. Therefore, a solid ground connection must be provided as shown on the following page.





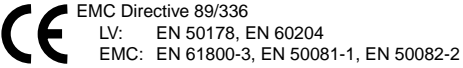
ATTENTION: To guard against possible equipment damage, RFI filters can only be used with AC supplies that are nominally balanced with respect to ground. In some installations, three-phase supplies are occasionally connected in a 3-wire configuration with one phase grounded (Grounded Delta). The filter must not be used in Grounded Delta supplies.



3. Connect the wires to the CE filter as shown in the diagram below.
(Three Phase unit shown.)



**Bulletin 1329I CE Filter
Option Specifications**

	1329I-NLF1	1329I-NLF3	1329I-JLF1	1329I-JLF3
Input Voltage	115/230 VAC	230/460 VAC	115/230 VAC	230/460 VAC
Input Phases	Single Phase	Three Phase	Single Phase	Three Phase
Frequency	50/60 Hz			
Rated Current	14 Amps	9 Amps	14 Amps	9 Amps
Power Dissipation	5 Watts			
Leakage Current (Worst Case)	0.5 mA			
Weight	0.33 Kg (0.73 lb)	0.45 Kg (0.99 lb)	4.72 Kg (10.41 lb)	4.89 Kg (10.78 lb)
Enclosure	Internal		NEMA 12/IP 65	
Operating Temperature	0° to 40°C (32° to 104°F)			
Storage Temperature	-40° to 85°C (-40° to 185°F)			
Relative Humidity	5% to 95%, non-condensing			
Vibration	1 G operational, 2.5 G non-operational			
Shock	15 G operational, 30 G non-operational			
Altitude	1000 meters (3300 feet) without derating. For every 91.4 meters (300 feet) above 1000 meters, derate current by 1%. Above 3000 meters (10,000 feet), consult your Allen-Bradley Sales Office.			
International Standards and Approvals	  			

Reach us now at www.rockwellautomation.com

Wherever you need us, Rockwell Automation brings together leading brands in industrial automation including Allen-Bradley controls, Reliance Electric power transmission products, Dodge mechanical power transmission components, and Rockwell Software. Rockwell Automation's unique, flexible approach to helping customers achieve a competitive advantage is supported by thousands of authorized partners, distributors and system integrators around the world.

Americas Headquarters, 1201 South Second Street, Milwaukee, WI 53204, USA, Tel: (1) 414 382-2000, Fax: (1) 414 382-4444
European Headquarters SA/NV, avenue Herrmann Debroux, 46, 1160 Brussels, Belgium, Tel: (32) 2 663 06 00, Fax: (32) 2 663 06 40
Asia Pacific Headquarters, 27/F Citicorp Centre, 18 Whitfield Road, Causeway Bay, Hong Kong, Tel: (852) 2887 4788, Fax: (852) 2508 1846

