

Kit Instructions

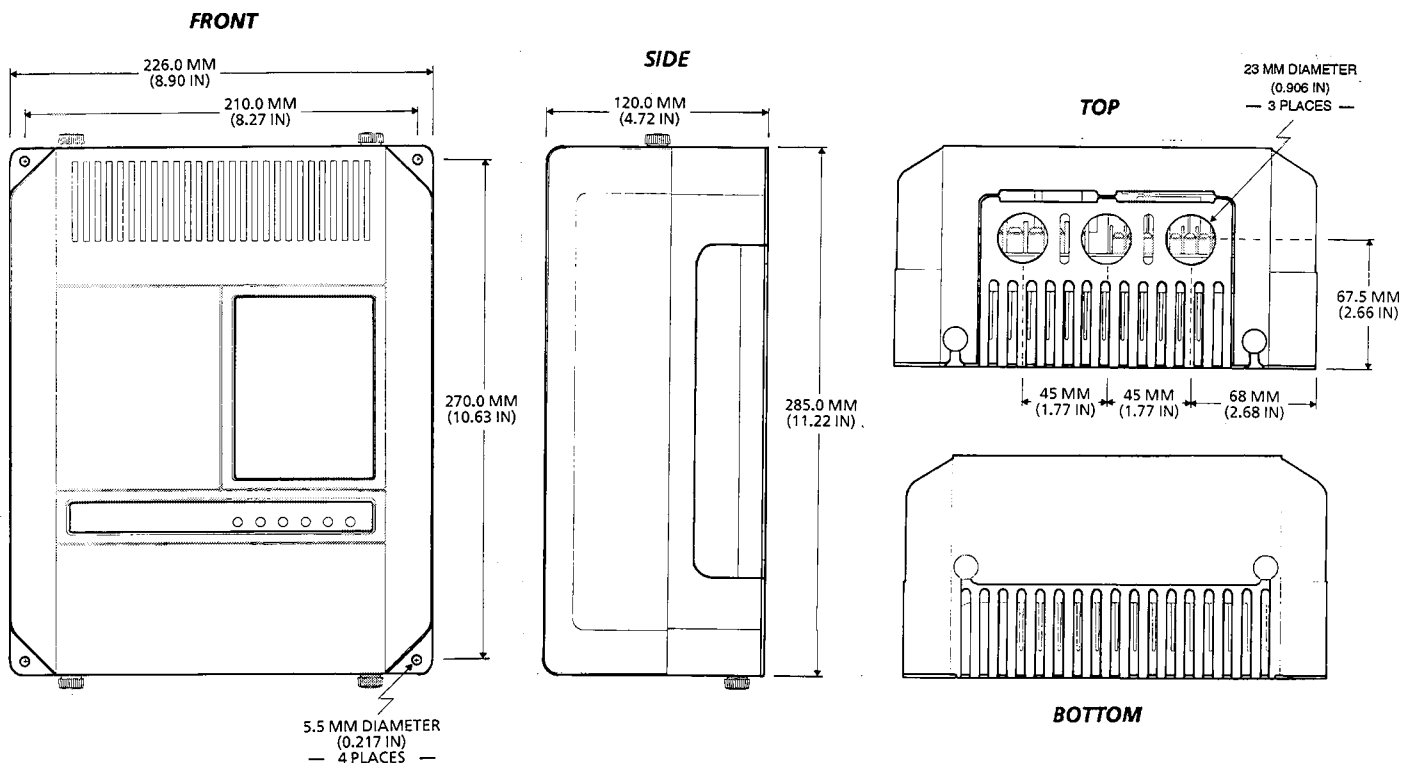
Bulletin 1331-MOD-A1 NEMA Type 1 Enclosure

DESCRIPTION

The Bulletin 1331 NEMA Type 1 Enclosure Kit provides a NEMA Type 1 (IP20) enclosure for open chassis 1331 drives. The kit consists of:

- (1) Plastic Cover
- (1) Steel Backplate
- (1) Blank Local Control Panel
- (4) Plastic Standoffs
- (4) M4 × 10 MM Metric Screws

DIMENSIONS IN MILLIMETERS AND (INCHES)



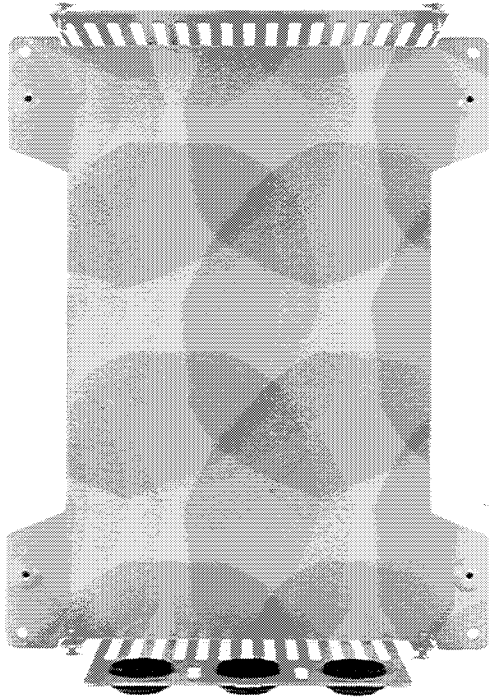
INSTALLATION

As shown on the back page, installation involves securing the open chassis drive to the steel backplate using the (4) screws provided. A Bulletin 1331 local control panel or blank local control panel is then installed using the (4) plastic standoffs. The plastic cover is secured to the assembly by tightening the four captive thumbscrews.

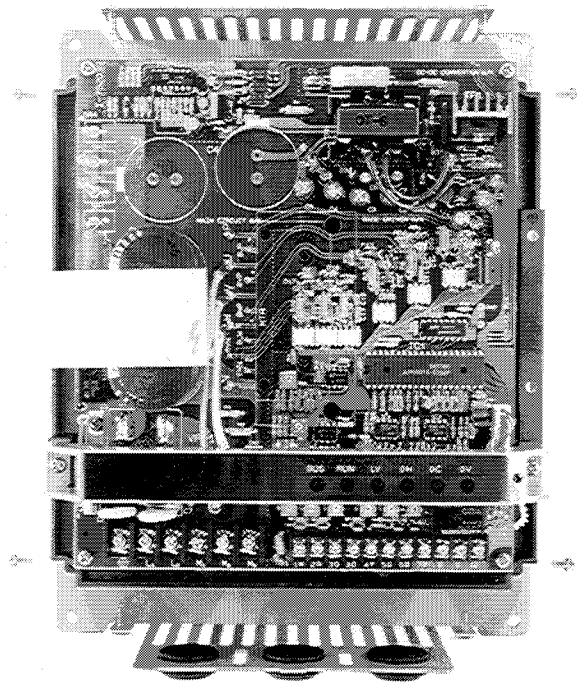
WARNING



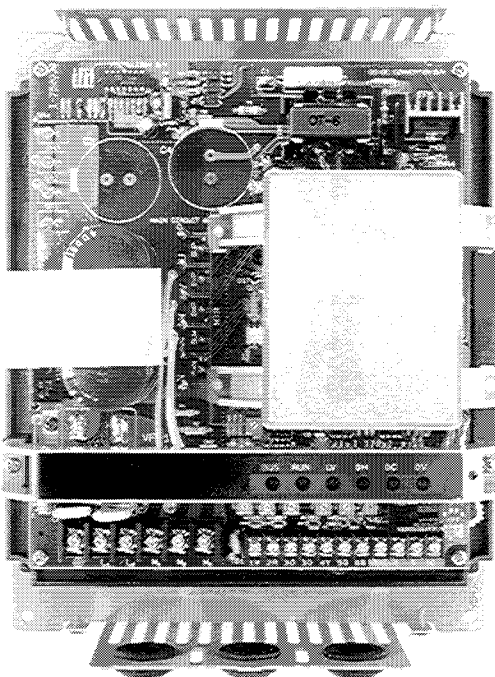
Electric shock can cause injury or death. Remove all power before working on this product.



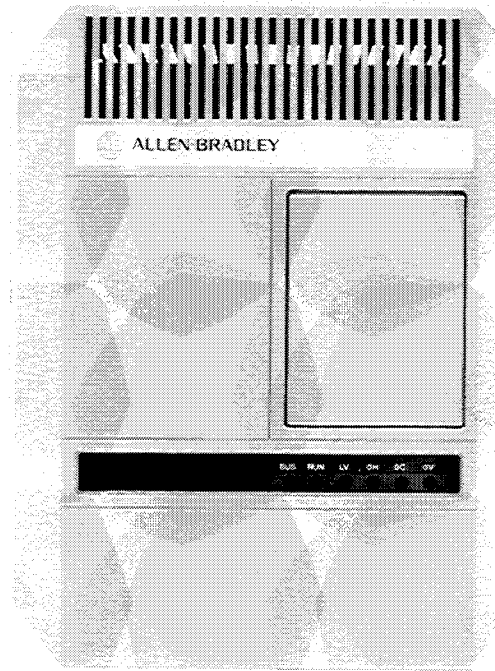
STEP 1



STEP 2



STEP 3



STEP 4



ALLEN-BRADLEY
A ROCKWELL INTERNATIONAL COMPANY