



# Allen-Bradley 1333 Series A-B-C Main Control Board

## Installation Instructions

### ESD Precautions



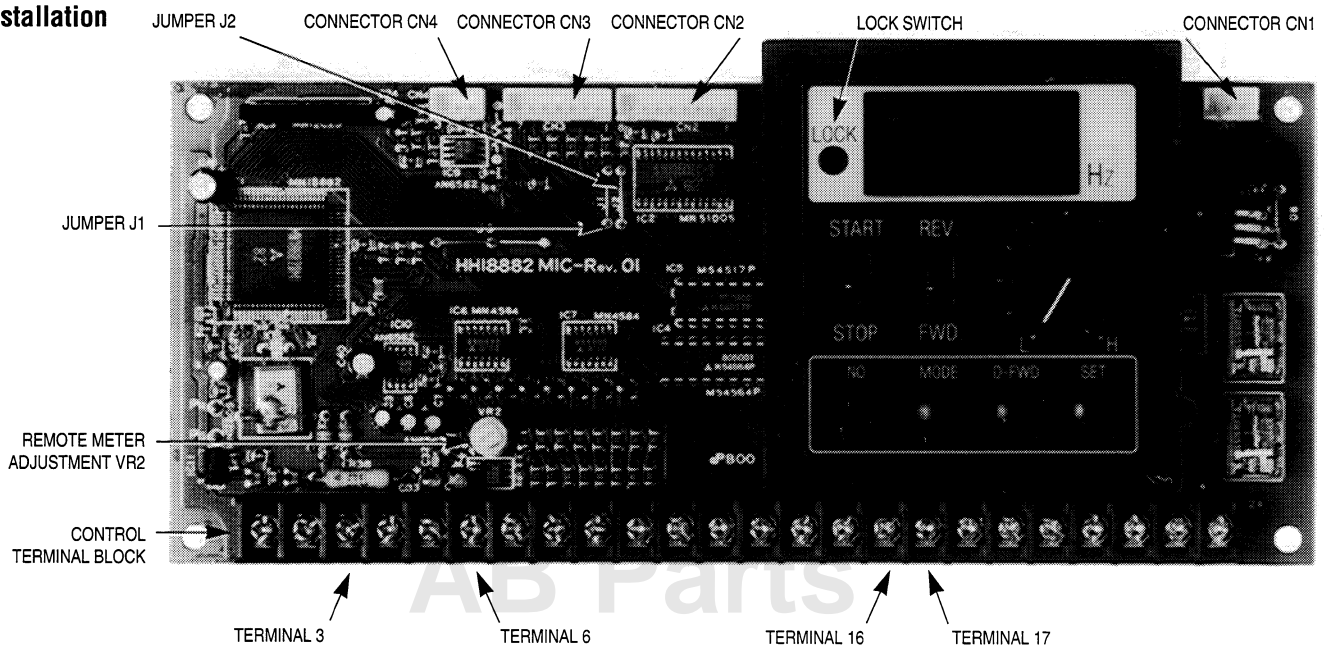
**ATTENTION:** This board and the Bulletin 1333 contains parts and sub-assemblies that are sensitive to electrostatic discharge. Static control precautions are required when servicing the drive or handling the board. Component damage may result if you ignore electrostatic discharge control procedures. If you are not familiar with static control procedures, reference Allen-Bradley Publication 8000-4.5.2, Guarding Against Electrostatic Damage, or any other applicable ESD protection handbook.

### Safety Precautions



**ATTENTION:** Some printed circuit boards and drive components may contain hazardous voltage levels. If the Bus Charge LED on the drive is lit, hazardous voltages are present in the drive. Remove and lock out power before you attempt board removal or installation. Failure to do so may result in electric shock or equipment damage. Bus voltage may be verified by using a voltmeter and measuring the voltage between the P (+Bus) and N (-Bus) terminals at the Power Terminal Block. Do not attempt to service the drive until the LED is extinguished and bus voltage has discharged to zero volts.

### Installation



## Installing the 1333 Series A, B or C Main Control Board

Before a 1333 Series A, B, or C Main Control Board can be installed it must be sized for your drive model. This ensures that the output transistors are not turned on simultaneously causing the drive to trip. (2) wire jumpers — J1 & J2 — located on the Main Control Board must be snipped off or left alone as detailed below.

1333 Series A, B or C Drives			Snip = ✂			Don't Snip = I		
230V Model	J1	J2	460V Model	J1	J2	575V Model	J1	J2
AAA	I	I	AAB	✂	I	AAC	I	✂
YAA	I	I	YAB	✂	I	YAC	I	✂
BAA	I	✂	BAB	✂	I	BAC	I	✂
CAA	I	✂	CAB	✂	I	CAC	I	✂
DAA	I	✂				DAC	I	✂
EAA	I	✂				EAC	I	✂
FAA	I	✂				FAC	I	✂
GAA	I	✂						
RAA	I	✂						
HAA	I	✂						
JAA	I	✂						
KAA	I	✂						

### Step 1 Remove and lockout all power to the drive.

Tag and disconnect all wires connected to the Control Terminal Block.

Tag and unplug connectors CN1-CN4.

Remove the (4) retaining screws holding the board in place.

### Step 2 Install the new board using the (4) retaining screws from Step 1.

Reconnect all Control Terminal Block wires.

Replug connectors CN1-CN4 into the board.

### Step 3 If required, ensure that the factory supplied jumper is installed between terminal 16 & 17 at the Control Terminal Block.

Set the lock switch to enable drive programming and reenter all field parameter settings. Verify drive operation as outlined in the Start-Up section of your manual. If a remote frequency meter is connected to terminals 3 & 6 at the Control Terminal Block, ensure that the calibration procedure in the Start-Up section is followed.



Allen-Bradley has been helping its customers improve productivity and quality for 90 years. We design, manufacture and support a broad range of control and automation products worldwide. They include logic processors, power and motion control devices, man-machine interfaces, sensors and a variety of software. Allen-Bradley is a subsidiary of Rockwell International, one of the world's leading technology companies.



## With major offices worldwide.

Algeria • Argentina • Australia • Austria • Bahrain • Belgium • Brazil • Bulgaria • Canada • Chile • China, PRC • Colombia • Costa Rica • Croatia • Cyprus • Czech Republic • Denmark • Ecuador • Egypt • El Salvador • Finland • France • Germany • Greece • Guatemala • Honduras • Hong Kong • Hungary • Iceland • India • Indonesia • Israel • Italy • Jamaica • Japan • Jordan • Korea • Kuwait • Lebanon • Malaysia • Mexico • New Zealand • Norway • Oman • Pakistan • Peru • Philippines • Poland • Portugal • Puerto Rico • Qatar • Romania • Russia-CIS • Saudi Arabia • Singapore • Slovakia • Slovenia • South Africa, Republic • Spain • Switzerland • Taiwan • Thailand • The Netherlands • Turkey • United Arab Emirates • United Kingdom • United States • Uruguay • Venezuela • Yugoslavia

World Headquarters, Allen-Bradley, 1201 South Second Street, Milwaukee, WI 53204 USA, Tel: (1) 414 382-2000 Fax: (1) 414 382-4444