



1334-MOD-R

Floor Stand Kit

Description The Bulletin 1334-MOD-R Option Kit provides (2) mounting feet which allow the 15-25 HP NEMA Type 12 enclosures and the 15-50 HP NEMA Type 1 enclosures to be free standing. The kit is compatible with both Series A and Series B Drives and will increase the total height of the Drive by six inches.

Each 1334-MOD-R Option Kit Includes —

- (2) Floor Stand Mounting Feet, P/N 122369
- (6) $\frac{1}{4}$ "-20 Hex Head Bolts with Built-in O-Rings, P/N 201598
- (6) $\frac{1}{4}$ " Split Lock Washers, P/N 235687
- (2) $\frac{1}{4}$ "-20 Hex Head Nuts, P/N 226416

Installation



WARNING

Only personnel familiar with the Drive and its associated machinery should plan or implement the installation, startup, and adjustment of MOD kits. Failure to comply may result in personal injury and/or equipment damage.

To guard against personal injury, always remove & lock out power to the Drive at the main supply disconnect and all other power source disconnects. Ensure that DS1 is not lit when boards or wires are being installed or connected. Refer to the instruction manual for your Drive for LED location.

Installation involves —

- Removing input power to the Drive at the disconnect device.
- Using the mounting feet as templates, marking and drilling (6) $\frac{1}{4}$ " diameter holes in the bottom of the enclosure.
- Installing the mounting feet using the hardware provided with the kit.

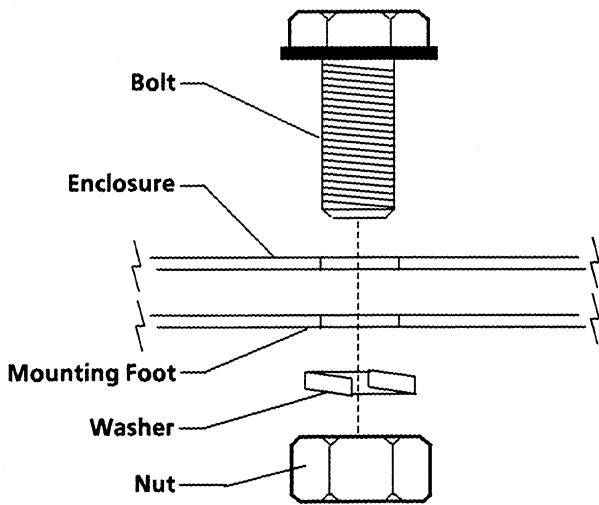
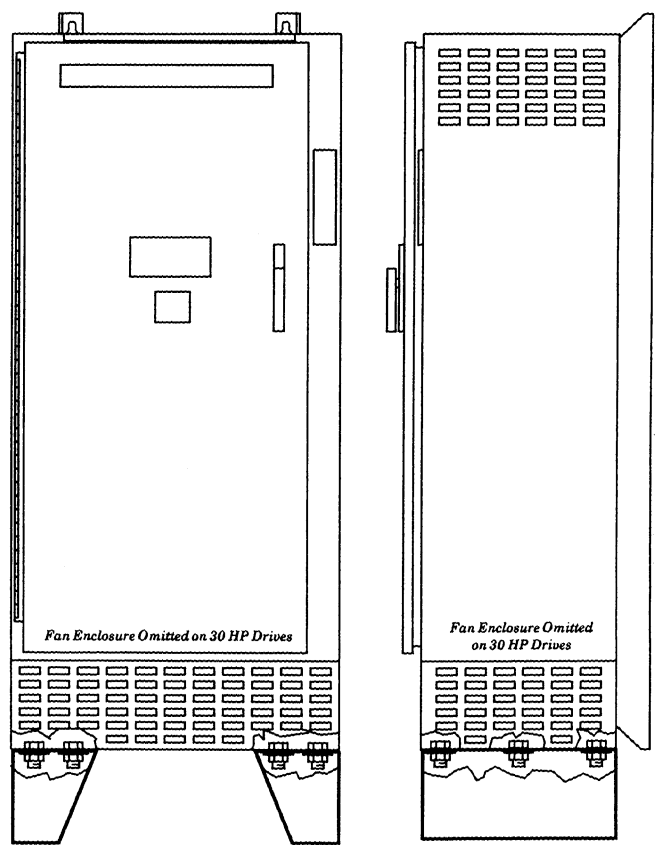
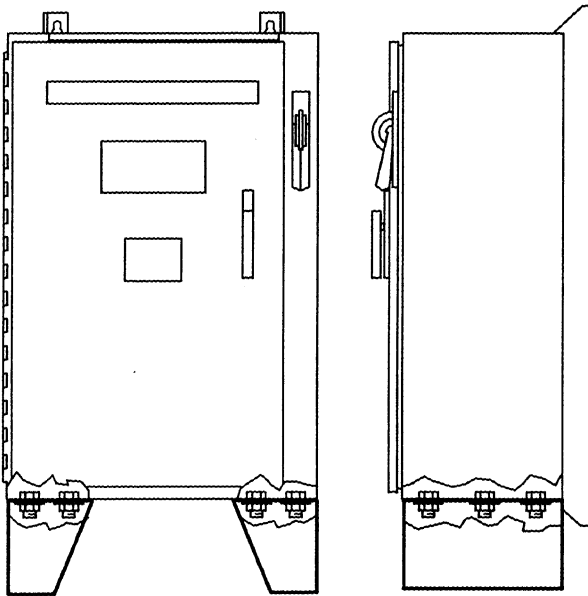


CAUTION

When drilling into the Drive enclosure, be sure to protect components from metal chips that could cause damage to the Drive once power is applied.

15 - 25 HP NEMA TYPE 12 DRIVES

30 - 50 HP NEMA TYPE 1 DRIVES



TORQUE TO 65 IN-LBS



With offices in major cities worldwide.

WORLD HEADQUARTERS
1201 South Second Street
Milwaukee, WI 53204 USA
Tel: (414) 382-2000
Telex: 43 11 016
FAX: (414) 382-2400

**EUROPE/INDIA/MIDDLE EAST/
AFRICA HEADQUARTERS**
Allen-Bradley
International Limited
Chiltern House
45 Station Road
Henley-on-Thames
Oxon, RG9 1AT England
Tel: (44) 491-577013
Telex: 851 849782
FAX: (44) 491-578933

ASIA/PACIFIC HEADQUARTERS
Allen-Bradley (Hong Kong) Limited
2901 Great Eagle Center
23 Harbour Road
G.P.O. Box 9797
Wanchai, Hong Kong
Tel: (852) 5-739391
Telex: 780 64347
FAX: (852) 5-745326

CANADA HEADQUARTERS
Allen-Bradley Canada Limited
135 Dundas Street
Cambridge, Ontario N1R 5X1
Canada
Tel: (519) 623-1810
Telex: 069 59317
FAX: (519) 623-8930

**LATIN AMERICA
HEADQUARTERS**
1201 South Second Street
Milwaukee, WI 53204 USA
Tel: (414) 382-2000
Telex: 43 11 016
FAX: (414) 382-2400

MOTION CONTROL DIVISION
4300 West Brown Deer Road
Brown Deer, WI 53223