



# Allen-Bradley 1336/1336VT Remote I/O Adapter Firmware Update Kit

## Installation Data

### What This Option Provides

The Bulletin 1336-MOD-G2 has been updated to incorporate firmware enhancements. The purpose of this publication is to describe the steps required to properly replace the old firmware chip on the Remote I/O Card with an enhanced chip. An explanation of the firmware enhancements has also been provided to assist the user in understanding how to integrate the 1336-MOD-G2 with new or existing systems in the 1336-MOD-G2 User Manual.

### What This Kit Contains

Each kit contains:

- (1) Firmware Chip
- (1) Remote I/O Board P/N Label
- (1) 0.15A Fuse
- (1) Electrostatic Wrist Strap
- (1) 1336-MOD-G2 User Manual



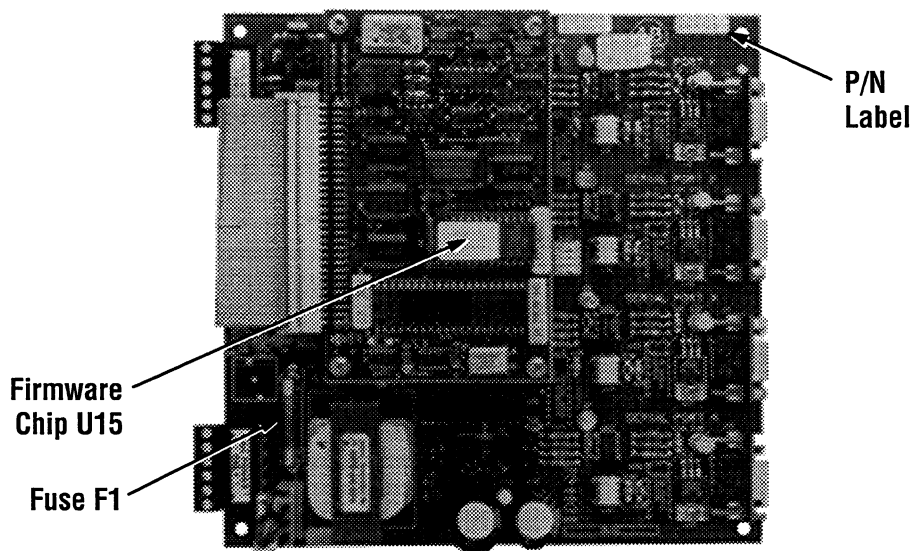
**ATTENTION:** This assembly may contain parts and sub-assemblies that are sensitive to electrostatic discharge. Static control precautions are required when testing, servicing or repairing this assembly. Component damage may result if you ignore electrostatic discharge control procedures. If you are not familiar with static control procedures, reference Allen-Bradley Publication 8000-4.5.2, Guarding Against Electrostatic Damage or any other applicable ESD protection handbook.

---

## Replacement Procedures



**ATTENTION:** Hazard of electric shock exists if accidental contact is made with parts carrying bus voltage. Before proceeding with any maintenance or troubleshooting activity, allow at least one minute after input power has been removed for the bus circuit to discharge. A bus charge neon indicator is incorporated on the drive to provide visual indication of the presence of bus voltage. Bus voltage should be verified by using a voltmeter to measure the voltage between the +DC and -DC terminals on the Power Terminal Block. Do not attempt any servicing until the neon light has extinguished and bus voltage has diminished to zero volts.



It is highly recommended that a chip-puller be used when replacing chip U15. If a chip-puller is not available, a less desirable method is to use a small screwdriver to gently pry up either end of the chip. If a screwdriver is used, extreme caution must be taken so that surrounding components are not damaged.

- Step 1** Ensure that power has been removed to the drive and the Remote I/O Board before beginning any of the following steps.
- Step 2** Put on the wrist strap and attach the alligator clip to earth ground or the cabinets' earth ground before removing the chip from its protective package.
- Step 3** Remove and discard firmware chip U15 using the chip-puller. Note the chip orientation notch and the orientation of the chip leads when inserting the new U15 chip on the board.



**ATTENTION:** Do not retain used firmware chips for spare parts. Discard immediately. A potential hazard of personal injury or machine damage exists if new programs or parameter values are used with old firmware versions.

---

- Step 4** Remove the old F1 fuse and replace it with the new fuse (the new fuse is already installed on Series C boards).
- Step 5** Remove the old board P/N Label from the upper right corner of the PCB and replace it with the new board label..
- Step 6** Before operating machinery, edit programs and drive parameter settings as needed, then test programs and settings with the motor disconnected from the load. Simulate emergency stop, power loss, loss of communications and running conditions. Observe drive motor performance. Correct any problems before reconnecting the motor to the load.



**ALLEN-BRADLEY**  
A ROCKWELL INTERNATIONAL COMPANY

Allen-Bradley has been helping its customers improve productivity and quality for 90 years. Allen-Bradley designs, manufactures and supports a broad range of control and automation products worldwide. They include logic processors, power and motion control devices, man-machine interfaces and sensors. Allen-Bradley is a subsidiary of Rockwell International, one of the world's leading technology companies.

With offices in major cities worldwide.

**WORLD  
HEADQUARTERS**

Allen-Bradley  
1201 South Second Street  
Milwaukee, WI 53204 USA  
Tel: (1) 414 382-2000  
Telex: 43 11 016  
Fax: (1) 414 382-4444

**EUROPE/AFRICA  
HEADQUARTERS**

Allen-Bradley GmbH  
European Commercial Headquarters  
Robert-Bosch-Strasse 5  
6072 Dreieich-Sprendlingen  
Germany  
Tel: (49) 26103-379733  
Fax: (49) 6103-379731

**ASIA/PACIFIC  
HEADQUARTERS**

Allen-Bradley  
1201 South Second Street  
Milwaukee, WI 53204 USA  
Tel: (1) 414 382-3269  
Telex: 43 11 016  
Fax: (1) 414 382-4050

**CANADA  
HEADQUARTERS**

Allen-Bradley Canada Limited  
135 Dundas Street  
Cambridge, Ontario N1R 5X1  
Canada  
Tel: (1) 519 623-1810  
Fax: (1) 519 623-8930

**LATIN AMERICA  
HEADQUARTERS**

Allen-Bradley  
1201 South Second Street  
Milwaukee, WI 53204 USA  
Tel: (1) 414 382-2000  
Telex: 43 11 016  
Fax: (1) 414 382-2400