



# AC LINE POWER ON/OFF RELAY • 1362-RP31A, 1362-RP32A

**ON/OFF RELAY REPLACEMENT**—Instructions for the replacement of the On/Off relay on Reversing and Non-Reversing Bulletin 1362 NEMA Type 4/13 controllers.

**WARNING:**

**REMOVE** and lock out **AC POWER** at main machine disconnect switch prior to removing On/Off Relay. Hazard of electrical shock is present if AC power is not removed.

**ON/OFF RELAY FOR BULLETIN 1362 NEMA TYPE 4/13 CONTROLLERS**—Replace as follows:

1. Open controller cover assembly.
2. Remove the two screws which secure Mounting Plate and Relay to cover (see Figure 1).
3. Remove Relay by unscrewing brass screw from Mounting Plate.
4. Clip leads as close as possible to relay solder lugs.
5. Solder leads to replacement Relay as shown in  
Figure 2 for 115V AC Non-Reversing Models  
Figure 2 for 115V AC Reversing Models  
Figure 3 for 230V AC Non-Reversing Models  
Figure 3 for 230V AC Reversing Models
6. Mount Relay to Mounting Plate with brass screw (see Figure 1).
7. Secure Relay and Mounting Plate to cover with two screws.
8. Install controller cover assembly.

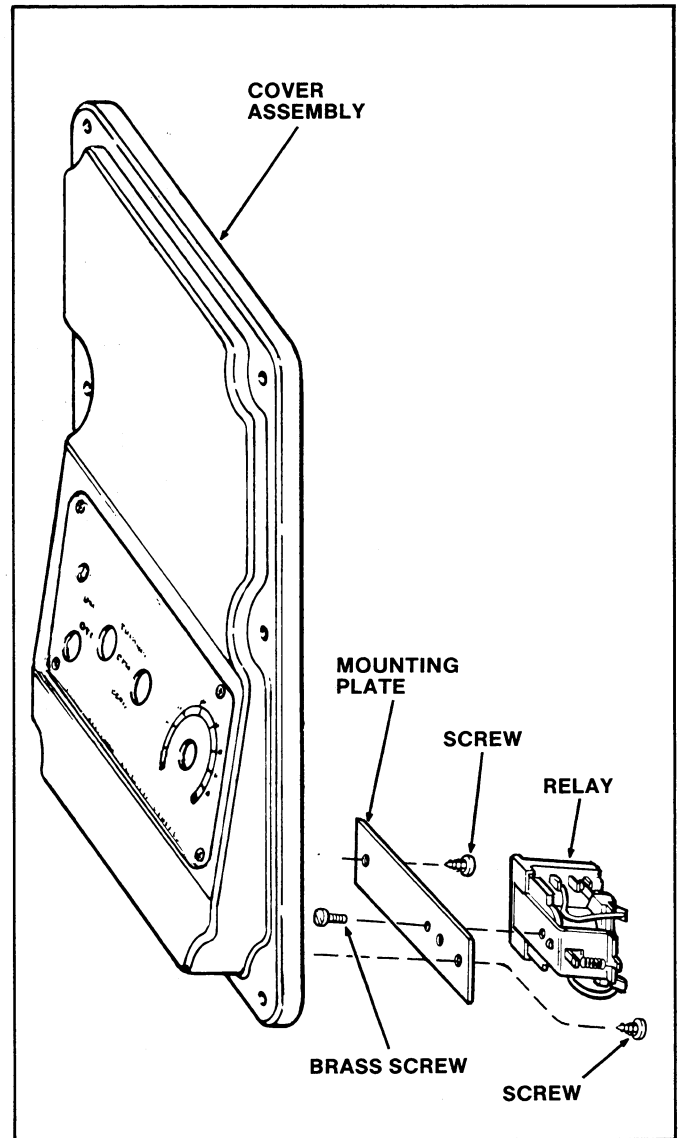


Figure 1—Assembly Diagram For On/Off Relay

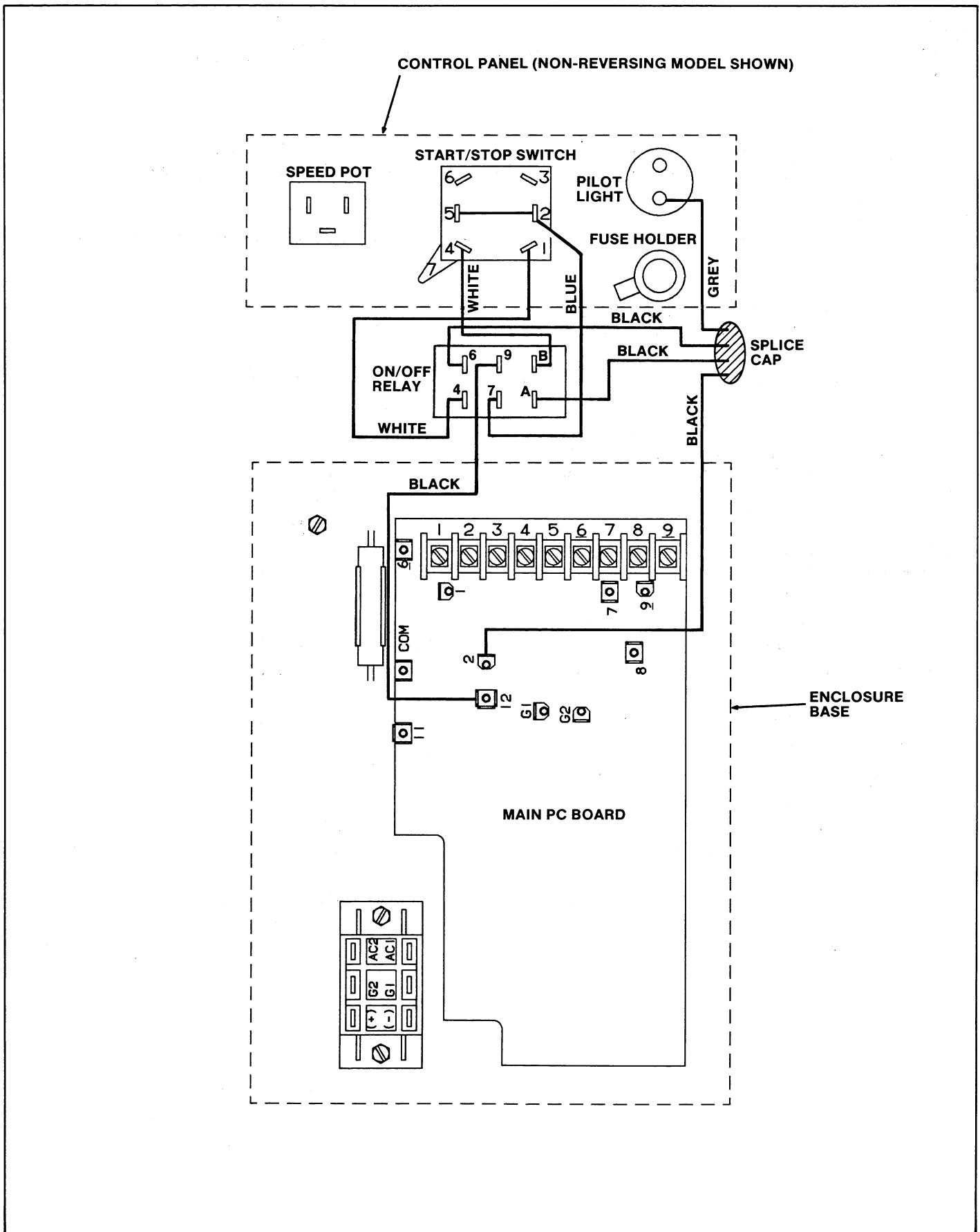


Figure 2—Connection and Wiring Diagram for On/Off Relay 115V AC Non-Reversing and Reversing Models

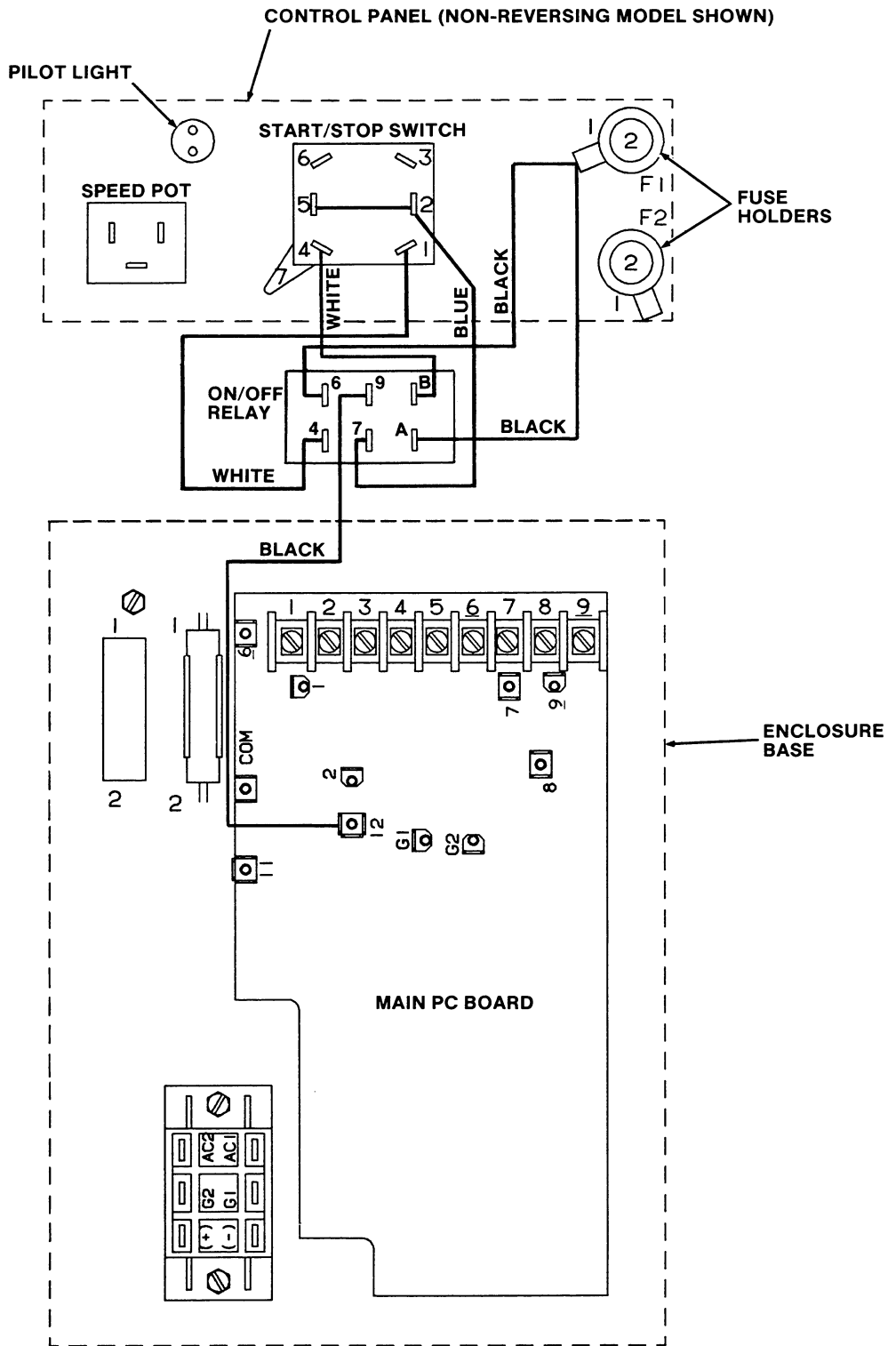


Figure 3—Connection and Wiring Diagram for on/off Relay  
230V AC Non-Reversing and Reversing Models



**ALLEN-BRADLEY**

Drives Division  
Cedarburg, Wisconsin 53012-0005

