

ControlLogix Motion System

using SERCOS Interface™
with the 1394 Digital Drive

Available in 2001

Product Profile

This ControlLogix motion system combines two world class products: the 1394 drive system and ControlLogix with embedded motion control. The 1394 with SERCOS interface™ is a digital, multi-axis servo drive system that connects to ControlLogix over a SERCOS (SERial Realtime COmmunication System) network. This architecture allows you to seamlessly integrate 1394 digital drives with the Allen-Bradley Logix architecture to solve the most demanding motion applications.

Simplified Motion Integration

With the SERCOS interface, a fiber optic ring replaces up to 18 discrete connections per axis required for traditional interfaces. This results in a significant reduction in installation time and eliminates troublesome wiring errors and noise issues.

In addition to providing I/O and logic programming support, RSLogix 5000 provides complete configuration and commissioning support for all motion drives and axes,

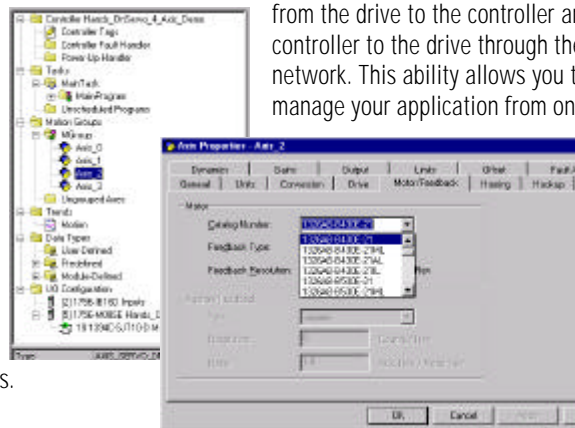
eliminating the need to manage multiple software packages. Full plug-and-play capability is provided. Just use RSLogix 5000 to create and configure each axis of motion, specify drive and motor catalog numbers, connect the drives to the SERCOS interface modules via the fiber optic ring, download the application program and run your application. Advanced 1394 drive algorithms in combination with smart motor technology virtually eliminates the need for manual drive tuning.

Remote Diagnostic Capability

Detailed drive status information can now be sent from the drive to the controller and from the controller to the drive through the SERCOS network. This ability allows you to remotely manage your application from one central

location. You no longer need to physically go to the drive to determine whether corrective action is required. Logix

users can also optimize system performance remotely by accessing drive performance information.



Bringing Together Leading Brands in Industrial Automation

Lower Overall System Costs

The ControlLogix 1756-M08SE SERCOS interface card can command up to eight axes of motion control from a single card. In addition, the SERCOS interface allows you to replace costly command and feedback wiring with a single fiber optic cable, thereby reducing not only wiring cost, but commissioning time as well.

Internationally Recognized Industry Standard

SERCOS is the only internationally approved, digital open standard (IEC 61491) with the performance required to synchronize multi-axis motion control. It is designed to focus on the efficient transfer of data specifically for servo control.

Greater Flexibility with Distributed Control

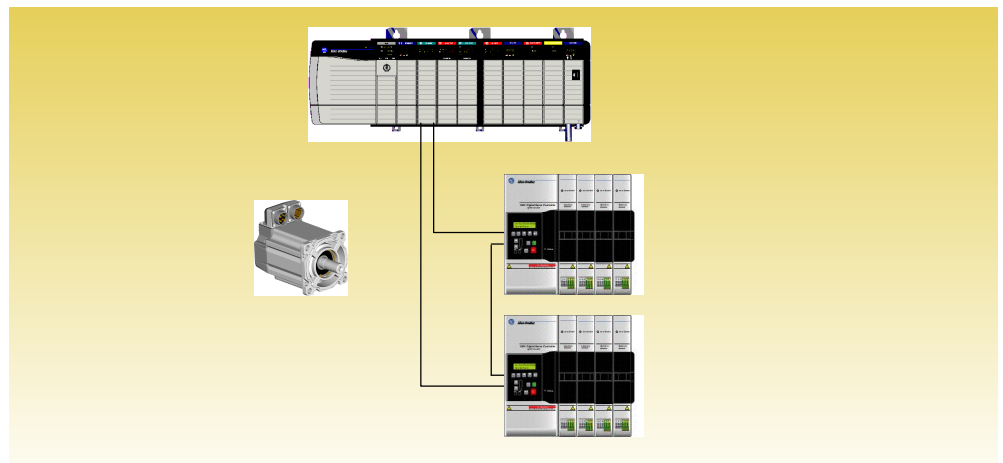
The SERCOS interface allows up to 32 meters between each node (controller or drive) or 200 meters with glass cable so you can mount the controller in a central location, then distribute the drive at convenient locations on the machine.

Key ControlLogix with 1394 Motion System Features

- Axis/Drive configuration wizards make commissioning easier
- Motion embedded in RSLogix5000 program simplifies programming and diagnostics
- 30 motion commands available providing the ability to handle a wide range of motion applications
- 32 axes of control from a single Logix processor keeps your system costs low
- smart motor feedback (MP-Series, 1326AB, and 1326AS motors) provides ease of startup
- absolute feedback capability for increased throughput
- competitively priced to enhance your bottom line

ControlLogix with the 1394 Digital Drive Motion System

Item	Catalog No.	Description
1394 with SERCOS Interface Multi-Axis Drive System	1394C-SJT05-D	5kW Multi-Axis Servo Drive System
	1394C-SJT10-D	10kW Multi-Axis Servo Drive System
	1394C-SJT22-D	22kW Multi-Axis Servo Drive System
1394 Servo Amplifiers	1394C-AM03	2kW Servo Amplifier Modules
	1394C-AM04	3kW Servo Amplifier Modules
	1394C-AM07	5kW Servo Amplifier Modules
	1394C-AM50-IH	15.6kW Servo Amplifier Modules (Internal Heatsink)
	1394C-AM75-IH	23.8kW Servo Amplifier Modules (Internal Heatsink)
	1394C-AM50	15.6kW Servo Amplifier Modules
	1394C-AM75	23.8kW Servo Amplifier Modules
ControlLogix Interface	1756-M08SE	8-Axis SERCOS Interface Card
SERCOS Fiber Optic Cable	2090-SCEP-x-x	Fiber Optic Interface Cable for use within Cabinets
	2090-SCVP-x-x	Fiber Optic Interface Cable for use outside Electrical Cabinets.
MP-Series Servo Motors	MPL-Bxxxx-xxxxxx	460 Volt MP-Series Servo Motors



Reach us now at www.rockwellautomation.com

Wherever you need us, Rockwell Automation brings together leading brands in industrial automation including Allen-Bradley controls, Reliance Electric power transmission products, Dodge mechanical power transmission components, and Rockwell Software. Rockwell Automation's unique, flexible approach to helping customers achieve a competitive advantage is supported by thousands of authorized partners, distributors and system integrators around the world.

Atlanta Headquarters, 1201 Peach Street, Marietta, GA 30067, USA, Tel: (770) 414-3222/2000, Fax: (770) 414-3224/1444
European Headquarters (EPL), Avenue Hermance Dubois, 48, 1180 Brussels, Belgium, Tel: (32) 2 840 01 00, Fax: (32) 2 840 01 00
Asia Pacific Headquarters, 27/F Citicor Centre, 16 Whitfield Road, Causeway Bay, Hong Kong, Tel: (852) 2867 4000, Fax: (852) 2868 1140

