

# PowerMonitor 1000 Unit Catalog Number Upgrade

Catalog Numbers 1408-UPT1-E3, 1408-UPT2-E3, 1408-UPE1-E3, 1408-UPE2-E3, 1408-UP485-ENT, 1408-UPT3-E3

Topic	Page
Important User Information	2
Upgrade the Device Catalog Number with the ControlFLASH Software Utility	3
Additional Resources	9

This manual provides instructions for upgrading the catalog number for the PowerMonitor™ 1000 unit.

---

**IMPORTANT** Before starting, verify that the appropriate network connections are made and that a driver for the network is configured in RSLinx® Classic software.

---

## Important User Information

Read this document and the documents listed in the additional resources section about installation, configuration, and operation of this equipment before you install, configure, operate, or maintain this product. Users are required to familiarize themselves with installation and wiring instructions in addition to requirements of all applicable codes, laws, and standards.

Activities including installation, adjustments, putting into service, use, assembly, disassembly, and maintenance are required to be carried out by suitably trained personnel in accordance with applicable code of practice.

If this equipment is used in a manner not specified by the manufacturer, the protection provided by the equipment may be impaired.

In no event will Rockwell Automation, Inc. be responsible or liable for indirect or consequential damages resulting from the use or application of this equipment.

The examples and diagrams in this manual are included solely for illustrative purposes. Because of the many variables and requirements associated with any particular installation, Rockwell Automation, Inc. cannot assume responsibility or liability for actual use based on the examples and diagrams.

No patent liability is assumed by Rockwell Automation, Inc. with respect to use of information, circuits, equipment, or software described in this manual.

Reproduction of the contents of this manual, in whole or in part, without written permission of Rockwell Automation, Inc., is prohibited.

Throughout this manual, when necessary, we use notes to make you aware of safety considerations.



**WARNING:** Identifies information about practices or circumstances that can cause an explosion in a hazardous environment, which may lead to personal injury or death, property damage, or economic loss.



**ATTENTION:** Identifies information about practices or circumstances that can lead to personal injury or death, property damage, or economic loss. Attentions help you identify a hazard, avoid a hazard, and recognize the consequence.

---

### IMPORTANT

Identifies information that is critical for successful application and understanding of the product.

---

Labels may also be on or inside the equipment to provide specific precautions.



**SHOCK HAZARD:** Labels may be on or inside the equipment, for example, a drive or motor, to alert people that dangerous voltage may be present.



**BURN HAZARD:** Labels may be on or inside the equipment, for example, a drive or motor, to alert people that surfaces may reach dangerous temperatures.



**ARC FLASH HAZARD:** Labels may be on or inside the equipment, for example, a motor control center, to alert people to potential Arc Flash. Arc Flash will cause severe injury or death. Wear proper Personal Protective Equipment (PPE). Follow ALL Regulatory requirements for safe work practices and for Personal Protective Equipment (PPE).

---

## Upgrade the Device Catalog Number with the ControlFLASH Software Utility

A PowerMonitor 1000 unit can only be upgraded in the following ways:

- Functionality Upgrade: From any model to an EM3, except BC3.
  - For example you CAN do: 1408-TR2-ENT to a 1408-EM3-ENT
  - For example you can NOT do: 1408-BC3-ENT to a 1408-EM3-ENT
  - For example you can NOT do: 1408-EM1-ENT to a 1408-EM2-ENT
- Communication Upgrade: From any current model 1408-XXX-485 to the same model 1408-XXX-ENT.
  - For example you CAN do: 1408-BC3-485 to a 1408-BC3-ENT
  - For example you CAN do: 1408-EM3-485 to a 1408-EM3-ENT

Refer to the PowerMonitor 1000 Unit Firmware Revision Update, publication [1408-IN003](#), for instructions on how to upgrade the firmware revision.

The accompanying CD contains a zip folder to upgrade the catalog number.

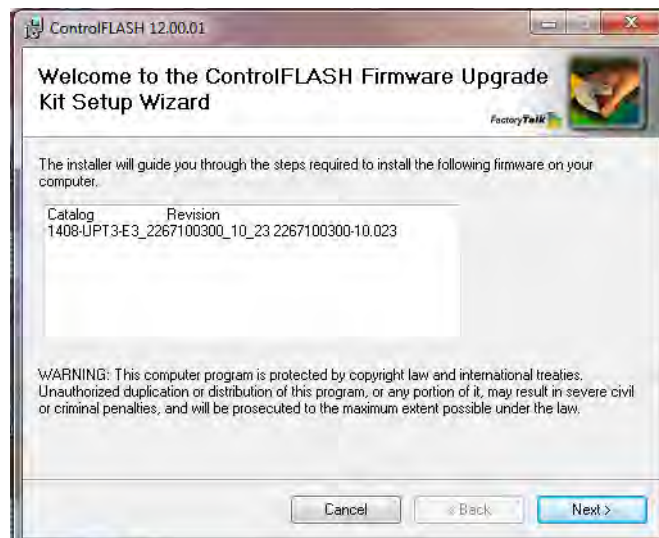
1. Move the zip folder to a local directory for installation of the upgrade
2. To launch the ControlFLASH™ software utility, open the folder.

**TIP** The zip file is specially created for only one unit with a specific serial number. Uploading the wrong file does not produce an effective catalog number upgrade.

3. Double-click the ControlFLASH.msi file from within the archive.

CONTENTS.TXT	5/5/2015 2:40 PM	1 KB
ControlFLASH.msi	5/5/2015 2:40 PM	10,300 KB
Upgrade Kit.zip	5/5/2015 9:40 AM	9,697 KB

4. In the Welcome to the ControlFLASH Firmware Upgrade Kit Setup Wizard dialog box, click Next.

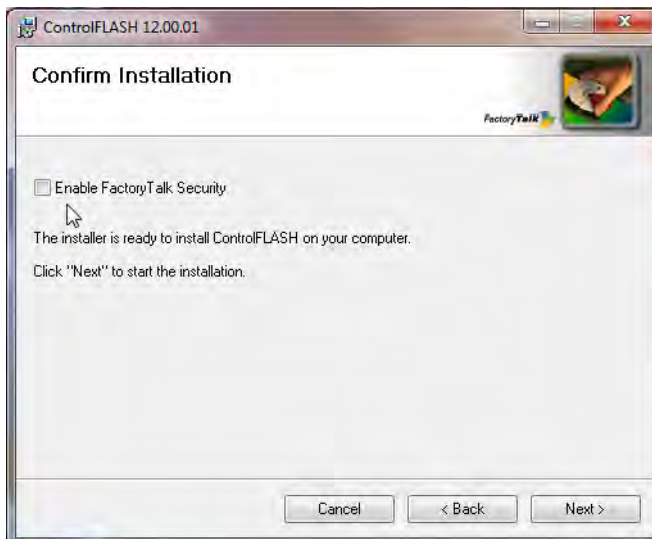


# AB Parts

5. After reviewing the End-User License Agreement, click I agree then click Next.

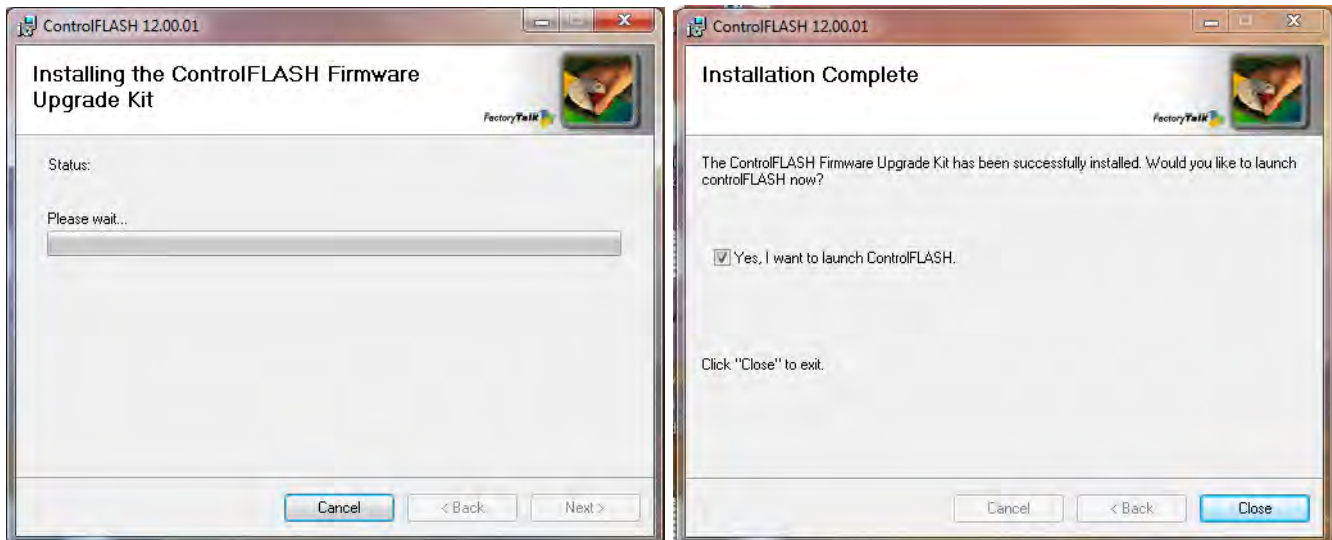


6. In the Confirm Installation dialog box, make sure that the Enable FactoryTalk® Security checkbox is clear and click Next.



The ControlFLASH Firmware Upgrade Kit installs.

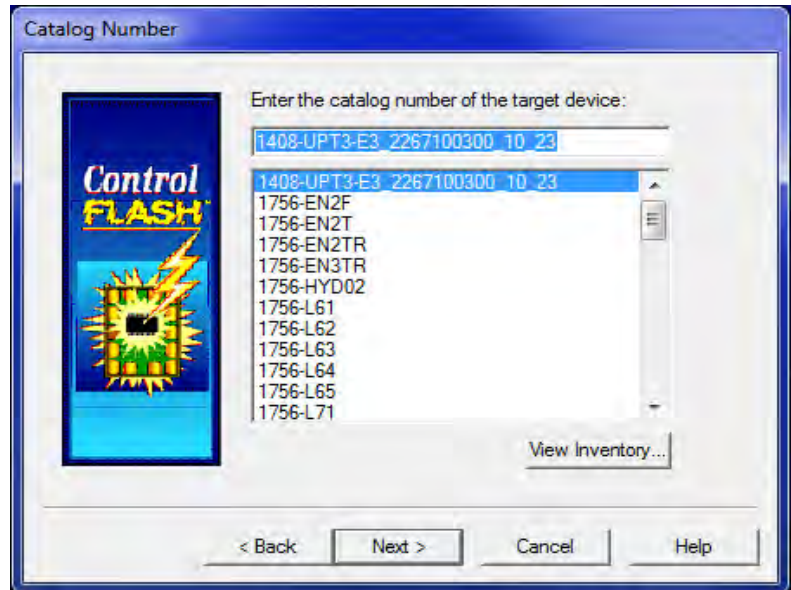
7. Once the kit is installed, check **Yes, I want to launch ControlFLASH** and click **Close**.



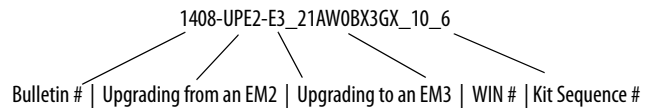
8. In the **Welcome to ControlFLASH** dialog box, click **Next**.



9. Select the current catalog number and serial number of the device and click Next.



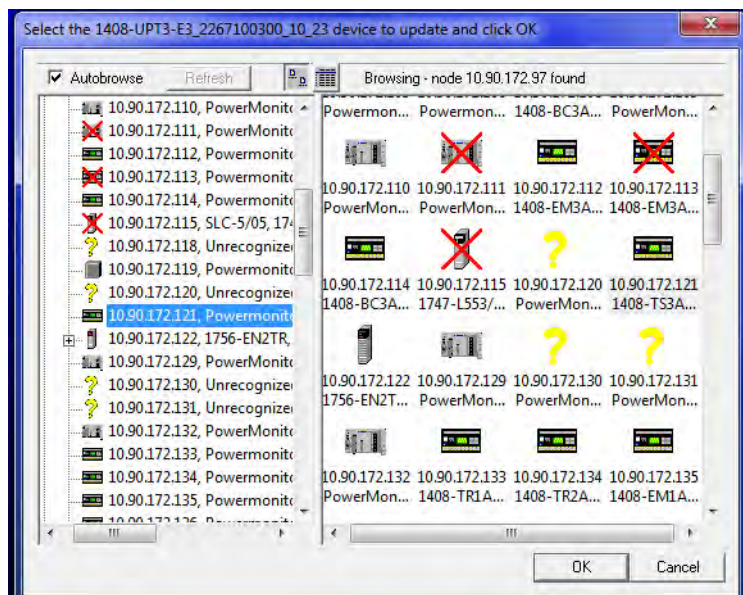
In this example the 1408-UPE2-E3\_21AW0BX3GX\_10\_6 is the catalog number for the targeted PowerMonitor unit.



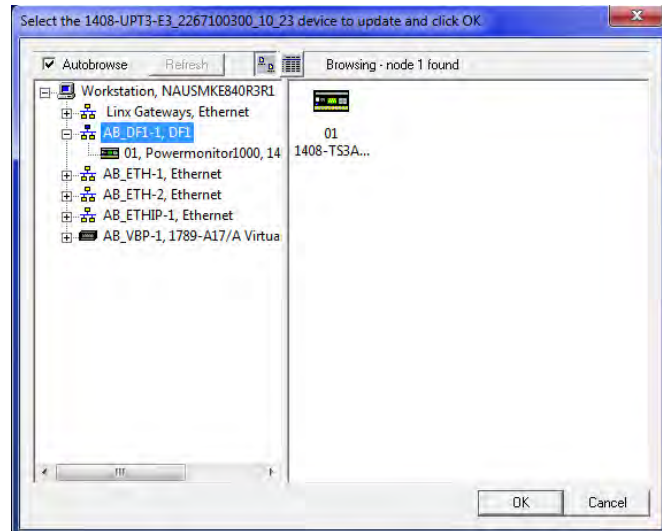
10. In RSLinx software, navigate to the IP address of the device over the Ethernet network, select the device, and click OK.

**TIP** RSLinx Classic Lite software must be installed to continue with the upgrade process.

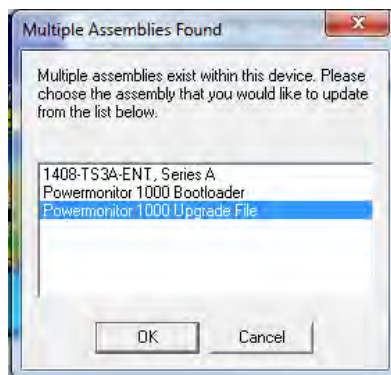
**TIP** To access the device IP address, the IP address must be added to the Ethernet device driver address list in RSLinx software.



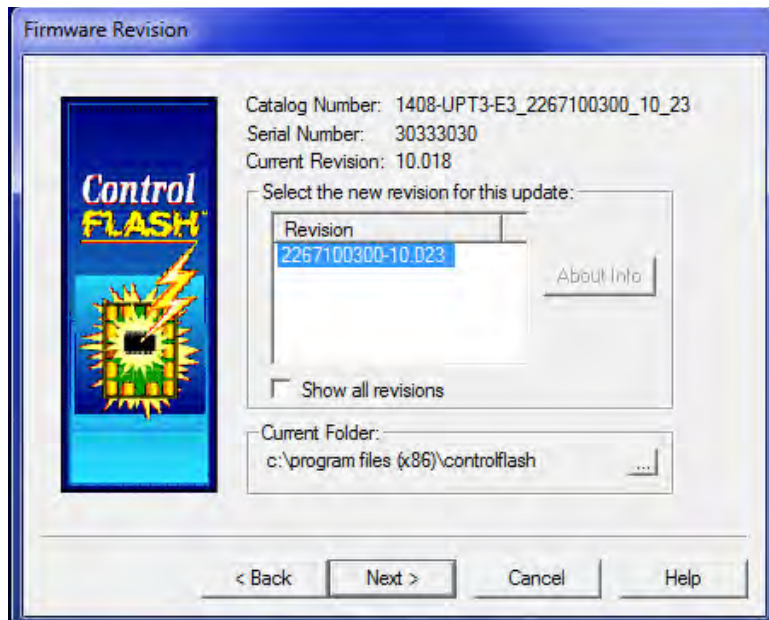
11. To upgrade the catalog number over the DF1 driver, navigate to the device through the network scanner in the RSLinx software window.



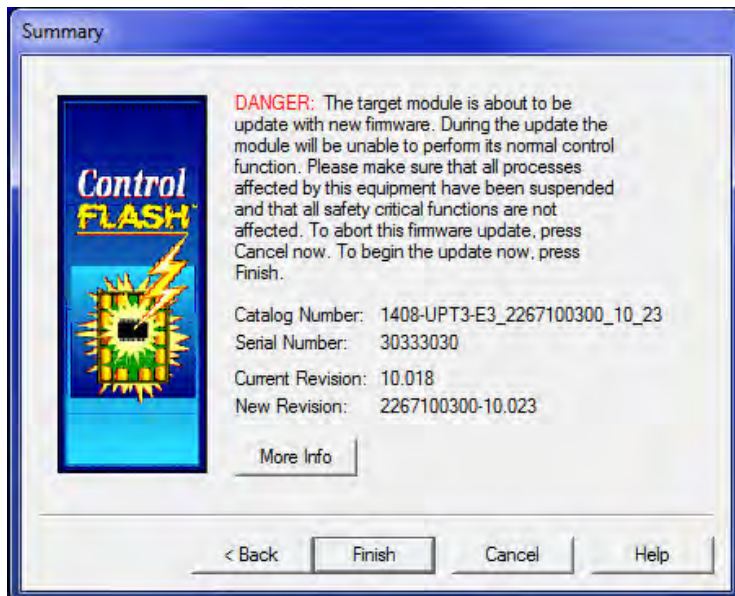
12. If prompted to select an assembly, select the Powermonitor 1000 Upgrade File and click OK.



13. Select the device serial number and click Next.



14. On the Summary dialog box, click Finish.



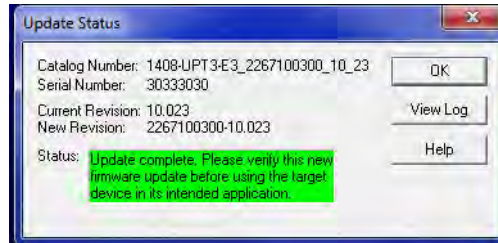
15. On the dialog box regarding upgrading the target device, click Yes.





16. On the Update Status dialog box, click OK to confirm that the upgrade is complete.

**TIP** The catalog number upgrade takes about one minute to complete. When the download is complete, wait about two more minutes to let the device restart, reestablish connection, and confirm that the upgrade was successful.



17. Check the device webpage to confirm that the catalog number is upgraded correctly.
18. Exit the ControlFLASH software utility.

## Additional Resources

These documents contain additional information concerning related products from Rockwell Automation.

Resource	Description
PowerMonitor 1000 Unit User Manual, publication <a href="#">1408-UM002</a>	Provides information on how to install and configure the PowerMonitor 1000 unit. The publication also provides memory organization, communication command summary, Explicit Messaging, SCADA applications, and the unit data tables.
PowerMonitor 1000 Firmware Upgrade Installation Instructions, publication <a href="#">1408-IN003</a>	Provides information on how to download a firmware upgrade.
ControlFlash Firmware Upgrade Software User Manual, publication <a href="#">1756-UM105</a>	Provides detailed instructions on the use of your ControlFlash software utility.
Industrial Automation Wiring and Grounding Guidelines, publication <a href="#">1770-4.1</a>	Provides general guidelines for installing a Rockwell Automation industrial system.
Product Certifications website, <a href="http://www.rockwellautomation.com/rockwellautomation/certification/overview.page">http://www.rockwellautomation.com/rockwellautomation/certification/overview.page</a>	Provides declarations of conformity, certificates, and other certification details.

You can view or download publications at <http://www.rockwellautomation.com/literature/>. To order paper copies of technical documentation, contact your local Allen-Bradley distributor or Rockwell Automation sales representative.

# AB Parts

## Rockwell Automation Support

Rockwell Automation provides technical information on the Web to assist you in using its products.

At <http://www.rockwellautomation.com/support> you can find technical and application notes, sample code, and links to software service packs. You can also visit our Support Center at <https://rockwellautomation.custhelp.com/> for software updates, support chats and forums, technical information, FAQs, and to sign up for product notification updates.

In addition, we offer multiple support programs for installation, configuration, and troubleshooting. For more information, contact your local distributor or Rockwell Automation representative, or visit <http://www.rockwellautomation.com/services/online-phone>.

## Installation Assistance

If you experience a problem within the first 24 hours of installation, review the information that is contained in this manual. You can contact Customer Support for initial help in getting your product up and running.

United States or Canada	1.440.646.3434
Outside United States or Canada	Use the <a href="#">Worldwide Locator</a> at <a href="http://www.rockwellautomation.com/rockwellautomation/support/overview.page">http://www.rockwellautomation.com/rockwellautomation/support/overview.page</a> , or contact your local Rockwell Automation representative.

## New Product Satisfaction Return

Rockwell Automation tests all of its products to help ensure that they are fully operational when shipped from the manufacturing facility. However, if your product is not functioning and needs to be returned, follow these procedures.

United States	Contact your distributor. You must provide a Customer Support case number (call the phone number above to obtain one) to your distributor to complete the return process.
Outside United States	Please contact your local Rockwell Automation representative for the return procedure.

## Documentation Feedback

Your comments will help us serve your documentation needs better. If you have any suggestions on how to improve this document, complete this form, publication [RA-DU002](#), available at <http://www.rockwellautomation.com/literature/>.

Rockwell Automation maintains current product environmental information on its website at <http://www.rockwellautomation.com/rockwellautomation/about-us/sustainability-ethics/product-environmental-compliance.page>.

Allen-Bradley, Rockwell Software, Rockwell Automation, PowerMonitor, ControlFlash, FactoryTalk, and RSLinx are trademarks of Rockwell Automation, Inc. Trademarks not belonging to Rockwell Automation are property of their respective companies.

Rockwell Otomasyon Ticaret A.Ş., Kar Plaza İş Merkezi E Blok Kat:6 34752 İçerenköy, İstanbul, Tel: +90 (216) 5698400

**[www.rockwellautomation.com](http://www.rockwellautomation.com)**

### Power, Control and Information Solutions Headquarters

Americas: Rockwell Automation, 1201 South Second Street, Milwaukee, WI 53204-2496 USA, Tel: (1) 414.382.2000, Fax: (1) 414.382.4444  
Europe/Middle East/Africa: Rockwell Automation NV, Pegasus Park, De Kleetlaan 12a, 1831 Diegem, Belgium, Tel: (32) 2 663 0600, Fax: (32) 2 663 0640  
Asia Pacific: Rockwell Automation, Level 14, Core F, Cyberport 3, 100 Cyberport Road, Hong Kong, Tel: (852) 2887 4788, Fax: (852) 2508 1846

Publication 1408-IN002B-EN-P - July 2015

Supersedes Publication 1408-IN002A-EN-P - May 2007

Copyright © 2015 Rockwell Automation, Inc. All rights reserved. Printed in the U.S.A.