

LISTEN.
THINK.
SOLVE.SM

SELECTION GUIDE

BULLETIN 140F
IEC Fuse Holders



Allen-Bradley Parts

Fuse Holders

Product Selection

Bulletin 140F Fuse Holders

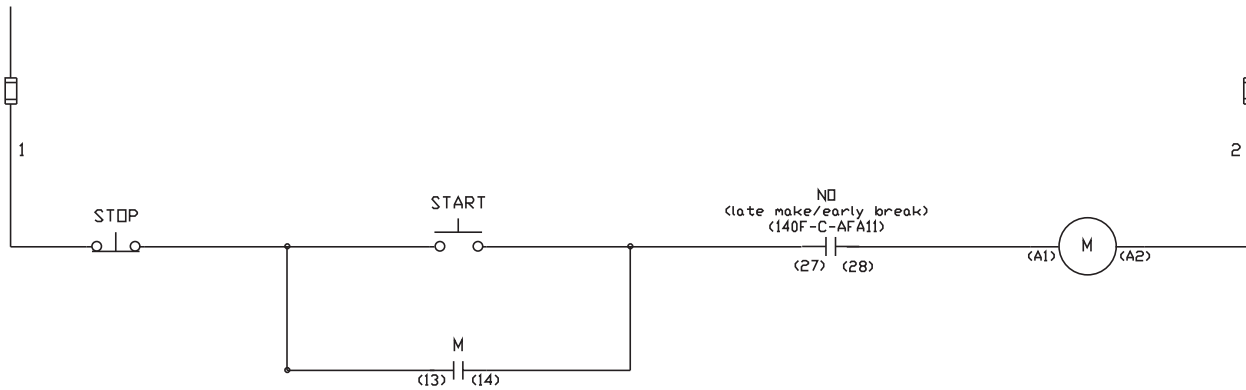
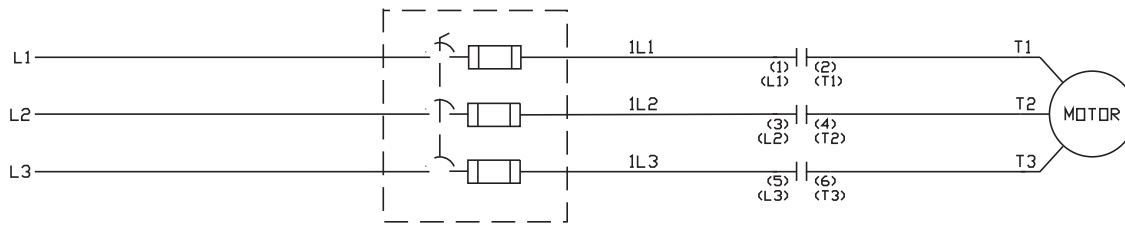
- Available for UL Class CC or Midget Fuses and IEC 10 x 38 mm fuses, with or without blown fuse indication
- Lockable in the open position
- Compatible with Bulletin 140M accessories
- Compact busbar and connectors for Bulletin 100-C and 100-M contactors
- 1 N.O./ 1 N.C. Auxiliary Contact—late make N.O., early break N.C.
 - Provides capability for dropping out contactor before breaking current on fuses
 - Late make N.O. contact provides positive indication that power circuit is open



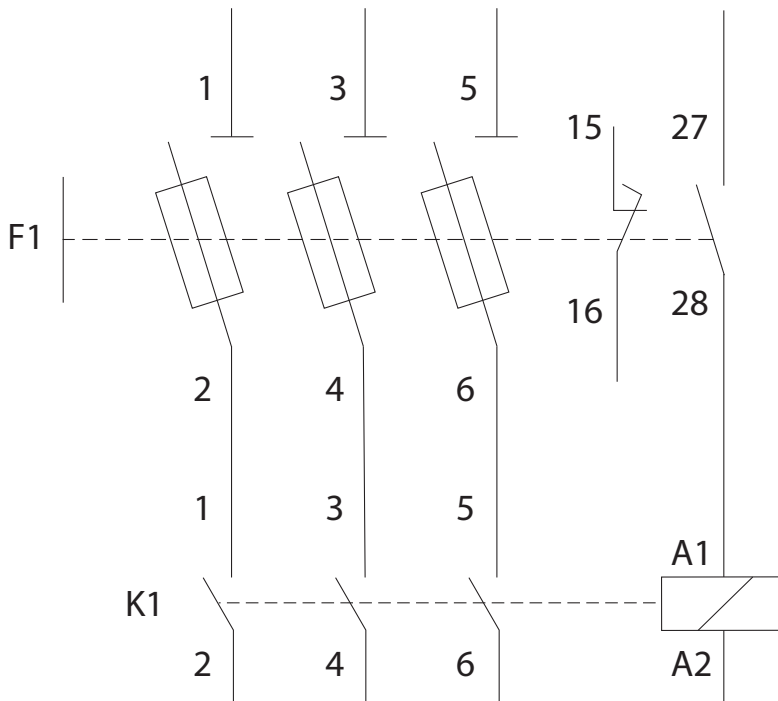
Description	Fuse Withstand, Max. [kA]	Voltage Rating, Max.[V]	Approvals				Cat. No.				
			IEC	CE Mark	UL	CSA					
Fuse Holder, UL Class CC — 30 A max.	200	600	Yes	Yes	Yes	Yes	140F-D3C-C30				
Fuse Holder with Blown Fuse Indication, UL Class CC — 30 A max.							140F-D3C-C30L				
Fuse Holder, UL Midget — 30 A max.							140F-D3M-C30				
Fuse Holder with Blown Fuse Indication, UL Midget — 30 A max.							140F-D3M-C30L				
Fuse Holder, IEC 10 x 38 mm — 32 A max.	200	690	Yes	Yes	No	No	140F-D3F-C30				
Fuse Holder with Blown Fuse Indication, IEC 10 x 38 mm — 32 A max.							140F-D3F-C30L				
Auxiliary Contact for Fuse Holder (1 N.O. Late Make + 1 N.C. Early Break)	—	—					Yes	Yes	Yes	Yes	140F-C-AFA11

For additional accessories, refer to Bulletin 100-C/100-M contactors and Bulletin 140M circuit breakers.

UL/CSA (ANSI)



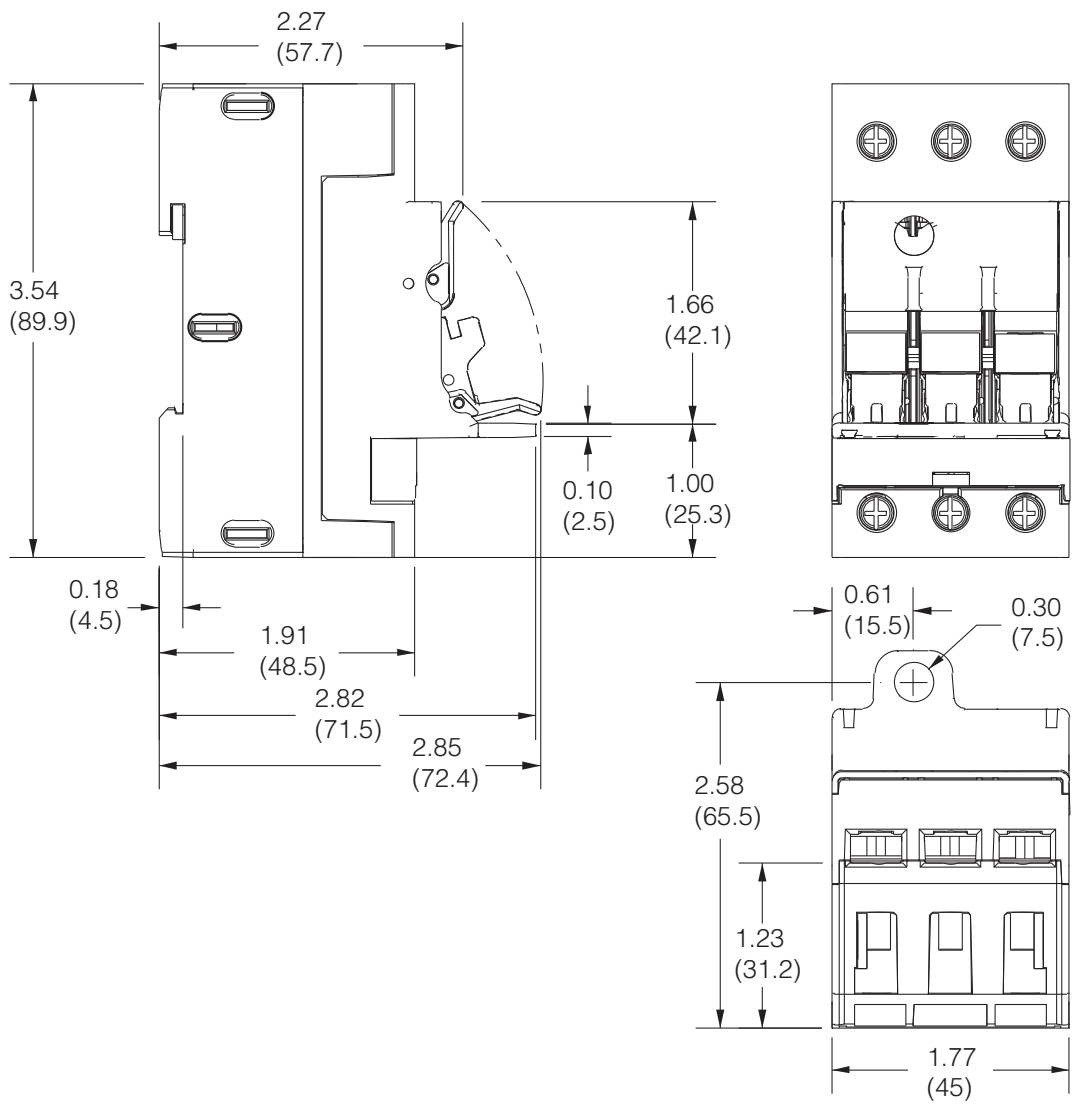
IEC



Fuse Holders

Approximate Dimensions

Dimensions are in inches (mm). Dimensions are not to be used for manufacturing purposes.



www.rockwellautomation.com

Power, Control and Information Solutions Headquarters

Americas: Rockwell Automation, 1201 South Second Street, Milwaukee, WI 53204-2496 USA, Tel: (1) 414.382.2000, Fax: (1) 414.382.4444

Europe/Middle East/Africa: Rockwell Automation, Vorstlaan/Boulevard du Souverain 36, 1170 Brussels, Belgium, Tel: (32) 2 663 0600, Fax: (32) 2 663 0640

Asia Pacific: Rockwell Automation, Level 14, Core F, Cyberport 3, 100 Cyberport Road, Hong Kong, Tel: (852) 2887 4788, Fax: (852) 2508 1846