

Dynamix 2500 Extension Modules

Catalog Numbers 1441-DYN25, 1441-DYN25-Z, 1441-DYN25-4C, 1441-DYN25-MBMP, 1441-DYN25-MBAL, 1441-DYN25-MFRF, 1441-DYN25-MREC, 1441-DYN25-MRUC

Topic	Page
License Usage	1
Install an Extension Module	2
Additional Resources	4

License Usage

Each application extension Secure Digital (SD) card contains one application license that can be installed on one data collector at a time. Once an application is installed on a data collector, the card is locked so that it can only be used with that instrument. You can uninstall an application, freeing up the license. Once you have freed the license, you can install the application on a different data collector.

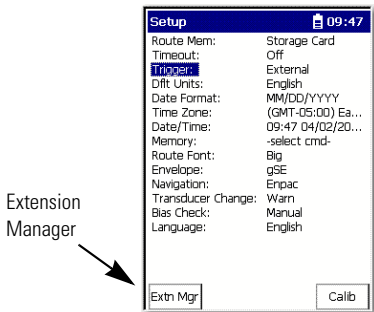
IMPORTANT

One installation card is required for each instrument that is upgraded.

Install an Extension Module

Follow these instructions to install a Dynamix 2500 data collector extension module.

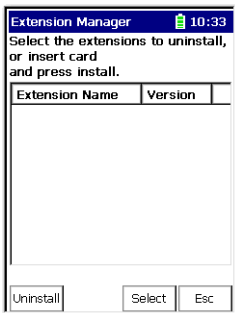
1. Open the base cover at the bottom of the Dynamix 2500 data collector.
2. Place the extension module SD card contact-side-up into the unit until it is firmly seated in place.
3. Close the base cover.
4. Apply power to the data collector.
5. From the Main Menu, select Setup Utility and press Enter.
6. Press 0 (Shift) to display the second set of functions.



The Extension Manager function remains on the screen for about three seconds after releasing 0 (Shift).

7. Press F1 (Extn Mgr).

The Extension Manager screen appears.



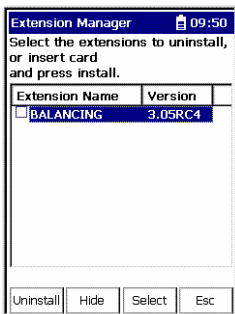
8. Press 0 (Shift) to display the Install extension function.



9. Press F2 (Install) to install the new extension module.

When the installation is complete, a confirmation prompt appears.

The new extension module appears in the list.



10. Press F4 (OK).
11. Press F4 (Esc) to exit the Extension Manager screen.

Additional Resources

These documents contain additional information concerning related Rockwell Automation products.

Resource	Description
Dynamix 2500 Data Collector User Manual, publication 1441-UM001	Describes how to configure the data connector, set up measurements, collect and review data, and load and unload data.
Dynamix 2500 Data Collector Bump Test Extension Module User Manual, publication 1441-UM002	Describes how determine natural (or resonant) frequencies of a machine or structure.
Dynamix 2500 Data Collector Balancing Extension Module User Manual, publication 1441-UM004	Describes the direct method to balance your rotating machinery in one or two planes.
Dynamix 2500 Data Collector Frequency Response Function Extension Module User Manual, publication 1441-UM003	Describes how to determine the natural frequencies of a machine or structure using modal hammer.
Dynamix 2500 Data Collector Time Recorder Extension Module User Manual, publication 1441-UM005	Describes how to use the data collector as a data recorder for real-time data acquisition, post processing, and analysis.
Dynamix 2500 Data Collector Run Up Coast Down Extension Module User Manual, publication 1441-UM006	Describes how to record and analyze data from intermittent events and transient vibration signals from non-steady state machines.
Emonitor User's Guide, publication EMONTR-UM001	Describes data management for predictive maintenance services.
Dynamix 2500 Data Collector Kit Release Notes, publication 1441-RN001	Provides important information on the latest updates, for example, firmware, certifications, warnings, and hardware changes for the data collector.
Industrial Automation Wiring and Grounding Guidelines, publication 1770-4.1	Provides general guidelines for installing a Rockwell Automation industrial system.
Product Certifications website, http://www.ab.com	Provides declarations of conformity, certificates, and other certification details.

You can view or download publications at
<http://www.rockwellautomation.com/literature>.

Allen-Bradley, Rockwell Software, Rockwell Automation, Emonitor, Dynamix, and Enpac are trademarks of Rockwell Automation, Inc.

Trademarks not belonging to Rockwell Automation are property of their respective companies.

Rockwell Otomasyon Ticaret A.Ş., Kar Plaza İş Merkezi E Blok Kat:6 34752 İçerenköy, İstanbul, Tel: +90 (216) 5698400

www.rockwellautomation.com

Power, Control and Information Solutions Headquarters

Americas: Rockwell Automation, 1201 South Second Street, Milwaukee, WI 53204-2496 USA, Tel: (1) 414.382.2000, Fax: (1) 414.382.4444
Europe/Middle East/Africa: Rockwell Automation NV, Pegasus Park, De Kleedlaan 12a, 1831 Diegem, Belgium, Tel: (32) 2 663 0600, Fax: (32) 2 663 0640
Asia Pacific: Rockwell Automation, Level 14, Core F, Cyberport 3, 100 Cyberport Road, Hong Kong, Tel: (852) 2887 4788, Fax: (852) 2508 1846

Publication 1441-RN002A-EN-P - May 2011

PN-107012

Copyright © 2011 Rockwell Automation, Inc. All rights reserved. Printed in the U.S.A.