

Dynamix™ 1444 Starter Kit

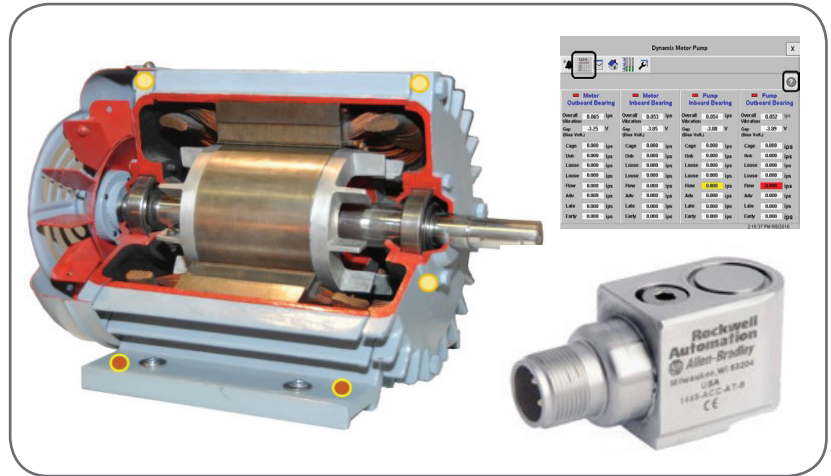
Discover the capabilities of the Dynamix 1444 Series system

Benefits of the Dynamix 1444 Starter Kit.

Need a flexible, scalable, Integrated Condition Monitoring system that's easy-to-use and affordable? Looking for easy configuration in a Pre-Wired form factor? Need a Pre-Engineered solution that will enable you to protect your key assets? The Dynamix 1444 starter kit is a discounted bundle of hardware or complete Pre-Wired solution that provides everything you need to get started.

- The basic objective of a condition monitoring system is to detect faults that manifest as increased vibration.
- The Dynamix™ 1444 Series system is designed to serve the protection and condition monitoring requirements of rotating and reciprocating industrial machinery.
- Dynamix 1444 allows you to leverage Integrated Architecture to assess current equipment health, predict potential issues and help avoid damage to critical machinery.
- The 1443 Series of sensors offers a family of accelerometers and accessories suitable for most applications. We include two Dual output AT type sensors output both acceleration and temperature measurements.
- Select the Loose Components (Option A) at an affordable price to build into your next project/ Panel or choose the Pre-Engineered (Option B) solution to start Monitoring your key assets to get results today.

Dynamix 1444 Starter Kit

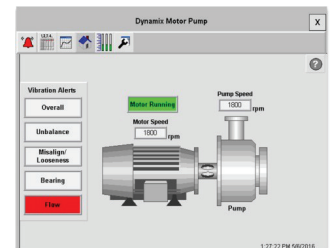


To protect equipment, Dynamix 1444 measures and monitors a machine's critical dynamic and position parameters and assures appropriate actions are performed, with the precision, reliability, and performance required by industry and regulatory standards.

For general condition monitoring, the Dynamix 1444 monitors offer unprecedented signal processing and measurement capabilities allowing you the tools necessary to detect and identify the faults and status across all classes of industrial machinery. You can send information to plant-wide and enterprise-wide databases for storage and trending.

With this information, you can take appropriate maintenance action, such as replacing worn-out components before they fail, protecting both production and equipment while reducing maintenance costs. The tight coordination between condition monitoring and the control system allows you to leverage existing investments in visualization and information solutions to improve machine builder and end user productivity and lower total cost of ownership. With Studio 5000™, you can deploy and maintain condition monitoring programming in the same design environment used for automation control.

Rockwell Automation provides a set of examples. These examples are called the Dynamix™ Accelerator Toolkit that can aid or speed in the development of the required solution. The Dynamix Accelerator Toolkit includes sample logic and HMI faceplates for use in integrating a Logix controller with a Dynamix 1444 Series Dynamic Measurement Module, using a PanelView™ Plus for visualisation. The kit includes example applications, a Motor Blower application and a Motor Pump application, sample panel, power, and wiring diagram drawings for a typical Dynamix installation, and a Quick Start guide. If you chose (Option B) we will Pre-Load the Accelerator Toolkit for convenience and ease of Start Up.



Dynamix 1444 Promotional Kit

Option A (Components Only, Cat No - 1444-STRT10)

5380 Controller and Accessories

- 5069-L306ER with Terminals
- 1783-US5T
- 1606-XLE120EE

PanelView Plus 7

- 2711P-T7C22D8S (PV+7 STD, Touch Screen, 6.5", TFT Color, DLR Ethernet, 24V DC)

Dynamix 1444

- 1 x 1444-DYN04-01RA with Spring Terminals
- 1 x 1444-TB-A with Spring Terminals
- 2 x 1443-ACC-AT-T (GP Accel and Temp, Top Exit, 100mV/g, 10mV/°C)
- 2 x 1443-CBL-MS3IBC-16S

Option B (Cat No - 1444-STRT11)

5370 Controller and Accessories

- 5069-L306ER with Terminals
- 1783-US5T
- 1606-XLE120EE

PanelView Plus 7

- 2711P-T7C22D8S (PV+7 STD, Touch Screen, 6.5", TFT Color, DLR Ethernet, 24V DC)

Dynamix 1444

- 1 x 1444-DYN04-01RA with Spring Terminals
- 1 x 1444-TB-A with Spring Terminals
- 2 x 1443-ACC-AT-T (GP Accel and Temp, Top Exit, 100mV/g, 10mV/°C)
- 2 x 1443-CBL-MS3IBC-16S

Installed & Wired in suitable Enclosure

- Mounted, Wired, Connected with Electrical Schematics
- Pre-Loaded with Dynamix Accelerator Toolkit

Standard terms, conditions and warranty apply. Promotion valid until 22nd December 2017. Engineering software requires registration and activation. Rockwell Automation reserves the right to amend or terminate this offer at any time.

Allen-Bradley, CompactLogix, FactoryTalk View ME, Studio 5000, RSLogix and PanelView are trademarks of Rockwell Automation, Inc. Trademarks not belonging to Rockwell Automation are property of their respective companies.



INDUSTRIAL
AUTOMATION



Authorised
Distributor

www.rockwellautomation.com

Power, Control and Information Solutions Headquarters

Americas: Rockwell Automation, 1201 South Second Street, Milwaukee, WI 53204 USA, Tel: (1) 414.382.2000, Fax: (1) 414.382.4444

Europe/Middle East/Africa: Rockwell Automation, Vorstlaan/Boulevard du Souverain 36, 1170 Brussels, Belgium, Tel: (32) 2 663 0600, Fax: (32) 2 663 0640

Asia Pacific: Rockwell Automation, Level 14, Core F, Cyberport 3, 100 Cyberport Road, Hong Kong, Tel: (852) 2887 4788, Fax: (852) 2508 1846