



FUSE BLOCKS

3 Pole - Class R

1-30 Amp.
Catalog Number 1491-R125
Catalog Number 1491-R126
Shipping Weight - 1 Lb.

31-60 Amp.
Catalog Number 1491-R226
Shipping Weight - 1 Lb.
Catalog Number 1491-R266
Shipping Weight - 2 Lbs.

250-600 Volts
250 Volts
600 Volts

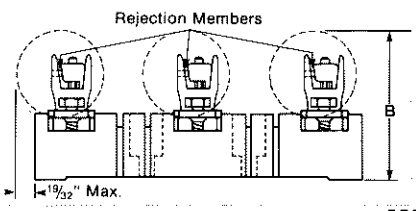
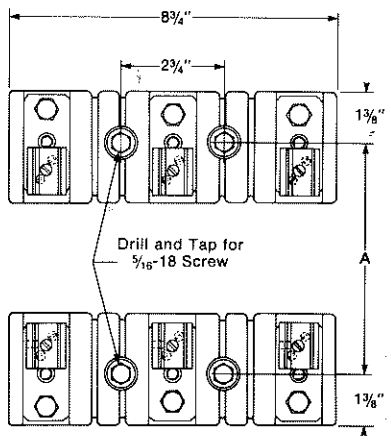
250-600 Volts
250 Volts
600 Volts

61-100 Amp.
Catalog Number 1491-R333
Shipping Weight - 3 Lbs.

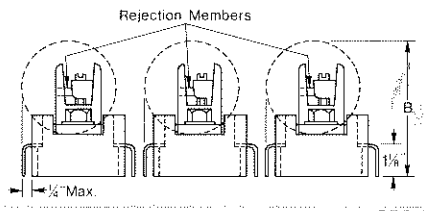
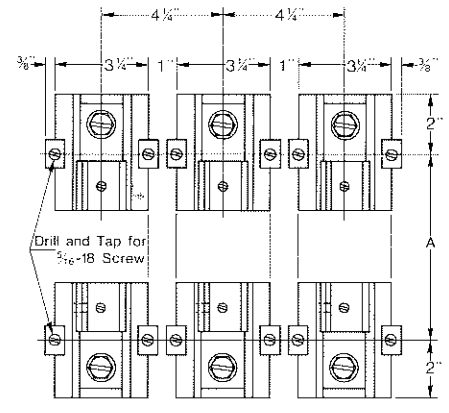
| Fuse Size Amperes | Maximum Volts | Catalog Number | Dimensions In Inches | |
|----------------------|------------------|-------------------|-------------------------|-----------|
| | | | A ±.020 | B Ref. |
| 1-30 | 250 | 1491-R125 | 2.94 | 2-1/8 |
| | 600 | 1491-R126 | 3.72 | 2-3/8 |
| 31-60 | 250 | 1491-R226 | 3.72 | 2-3/8 |
| | 600 | 1491-R266 | 6.22 | 2-11/16 |
| 61-100 | 250 | 1491-R333 | 5.88 | 2-15/16 |
| | 600 | | 7.88 | 3-1/8 |

■ Dimension "A" must be held to insure fuse block rejection function.
 NOTE: When fuse blocks are installed in a vertical plane, the block with the rejection members must be at the bottom.

40050-790-01(B)



101-200 Amp. 250-600 Volts
 Catalog Number 1491-R433 Shipping Weight — 7 Lbs.



201-400 Amp. 250-600 Volts
 Catalog Number 1491-R523 Shipping Weight — 19 Lbs.

| Fuse Size Amperes | Maximum Volts | Catalog Number | Dimensions In Inches | |
|-------------------|---------------|----------------|----------------------|---------|
| | | | A $\pm .020$ | B Ref. |
| 101-200 | 250 | 1491-R433 | 7.25 | 4-3/16 |
| | 600 | | 9.75 | 4-5/16 |
| 201-400 | 250 | 1491-R523 | 9.00 | 4-61/64 |
| | 600 | | 12.00 | 4-61/64 |

Dimension "A" must be held to insure fuse block rejection function.

NOTE: When fuse blocks are installed in a vertical plane, the block with the rejection members must be at the bottom.

