



Infrastructure for the Architecture

Creating an electrical infrastructure that maximizes the reliability of your critical control circuits

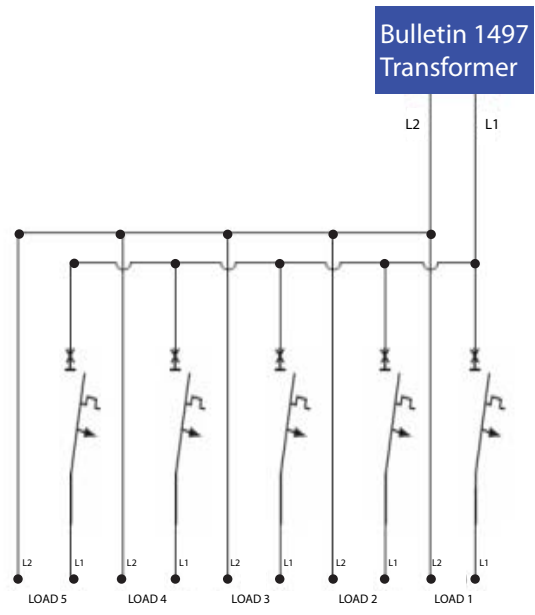
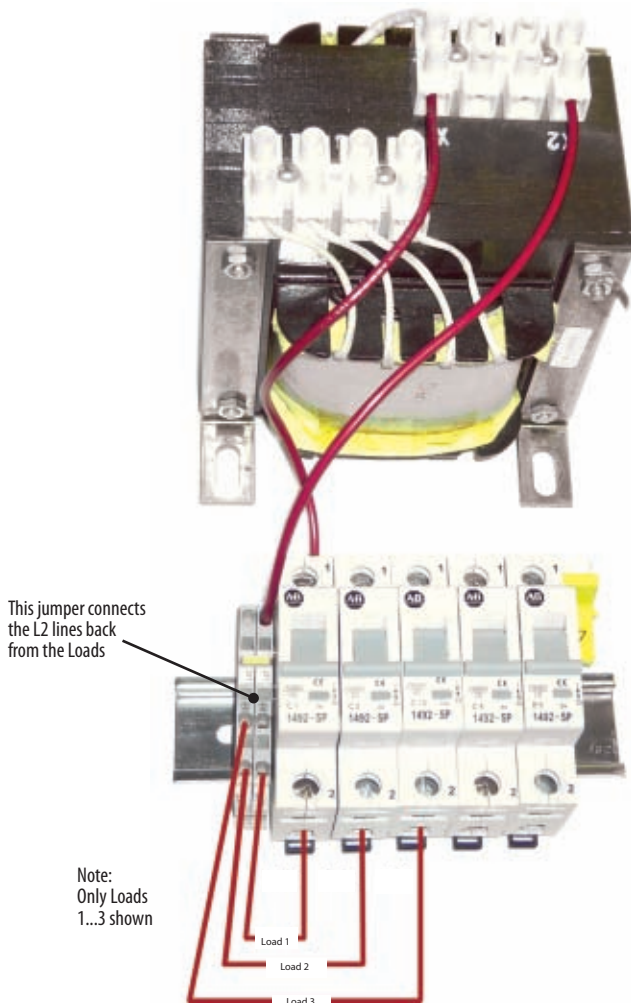
Distributing and Protecting Power

Application

This solution is designed for distributing and protecting power to a wide variety of products such as solenoids, relay and contactor coils, transformers, PLCs, power supplies and computers.

Component Solution

The distribution Control AC solution uses Bulletin 1492-SP* miniature circuit breakers and a bus bar to distribute power. The solution allows devices to be protected and isolated when necessary. In the photo below, the power is input in the top left and distributed via the bus bar. The bus bar comes in various sizes and may be cut to length to allow for fewer or more circuit breakers than the example shown. Different sizes of circuit breakers may be used to allow for the power requirement of various components.



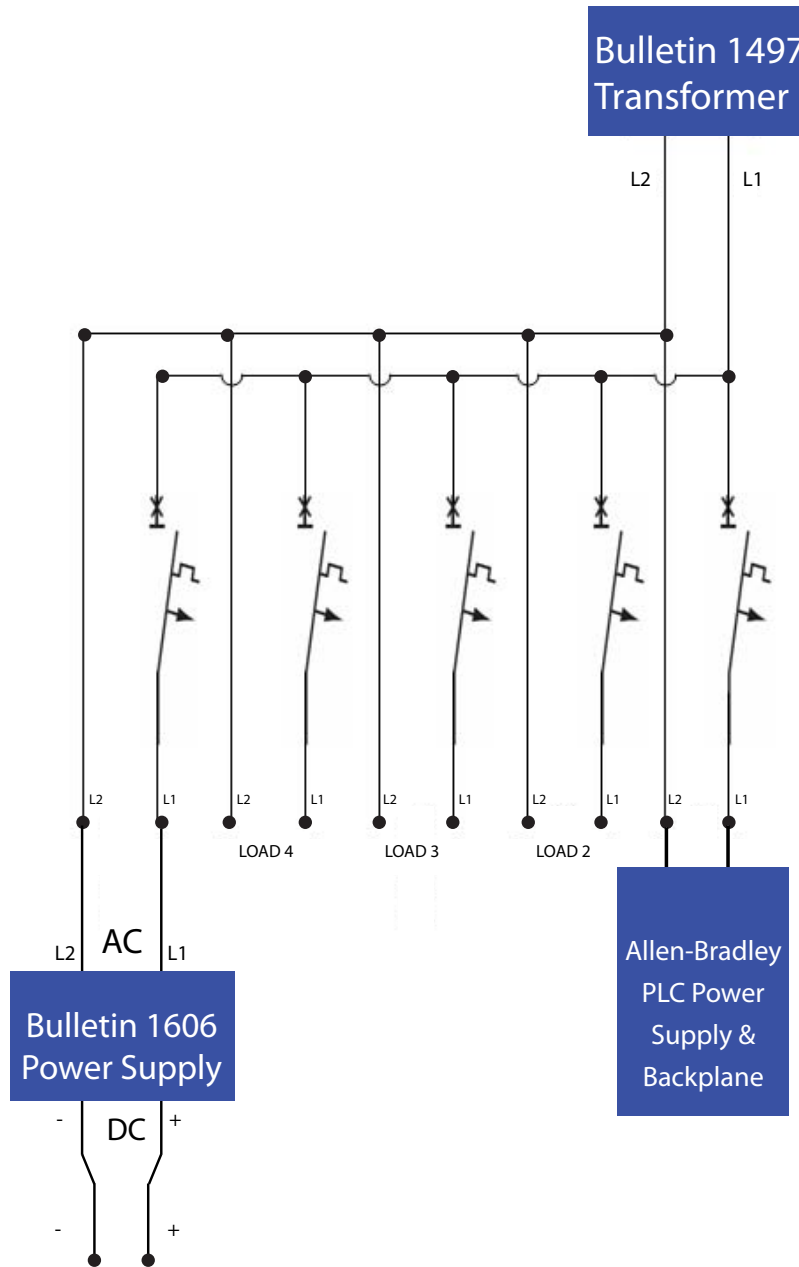
Component Solution Bill of Materials

Product	Cat. No.	Qty
Miniature circuit breaker	1492-SP*	2+
Self-adhesive marker tags	1492-MAS9X17	1
80A bus bar, cut to length	1492-A1B8	1
Bus bar end cap (if necessary)	1492-A1E	1+
Spring-clamp terminal block	1492-L3T	2
Center jumper	1492-CJK5-2	1
Control power transformer	1497-*	1



Allen-Bradley Spares

Typical Application - Distributing and Protecting Power



Allen-Bradley and Rockwell Automation are trademarks of Rockwell Automation Inc.

www.rockwellautomation.com

Power, Control and Information Solutions Headquarters

Americas: Rockwell Automation, 1201 South Second Street, Milwaukee, WI 53204 USA, Tel: (1) 414.382.2000, Fax: (1) 414.382.4444

Europe/Middle East/Africa: Rockwell Automation, Vorstlaan/Boulevard du Souverain 36, 1170 Brussels, Belgium, Tel: (32) 2 663 0600, Fax: (32) 2 663 0640

Asia Pacific: Rockwell Automation, Level 14, Core F, Cyberport 3, 100 Cyberport Road, Hong Kong, Tel: (852) 2887 4788, Fax: (852) 2508 1846