

Allen-Bradley® ClearMark™

Marking Solutions to Mark Your Connection

Advantages

- The ClearMark Printer provides high-quality printing in an easy-to-use format.
- Fast: Less than 2 minutes to print and set a full marker card
- Easy: Integrated feeder for up to 20 marker cards
- Low-maintenance: Automatically cycles as needed to keep ink flowing
- High-quality printing: 600 or 1200 dpi
- Color Printing: Use spot color for printing on white marker cards for visual distinction
- The ClearMark Printer uses inkjet printing technology with water-based ink that is bonded to the marker cards with heat.
- ClearTools™ Software allows customers to efficiently create markers from basic numbering to sequences and images

Allen-Bradley Marking Solutions enable efficient identification of terminal blocks and other components.



Overview

The Allen-Bradley ClearMark Printer is the latest addition to the Rockwell Automation marking solutions portfolio. The ClearMark Printer creates marker cards that can be used on terminal blocks as well as wires, cables and other industrial components. In addition, the Allen-Bradley ClearTools Software allows for use of all the capabilities of the ClearMark Printer. Marking solutions from Rockwell Automation allow you to efficiently mark your connections, facilitating installation, troubleshooting and servicing of industrial equipment.

The quality of print from the ClearMark Printer is the highest available. The ClearMark Printer prints in black and in color using water-based ink that is resistant to oil, water, cleaning agents and UV radiation. The ClearMark Printer gives the flexibility to use full or half marker cards. Communication options are USB or LAN connections.

The ClearMark Printer is ideal for high-volume customers who print more than fifty marker cards each week. The X-Y Plotter supports the flexibility of mid-volume marking. Low-volume marking needs are met with pre-printed and custom markers.

Printer: Catalog Numbers

1492-PRINT110 (100...120 V)
1492-PRINT 220 (220...240 V)

Ink Cartridges:

1492-PRINTINK-C (Cyan)
1492-PRINTINK-M (Magenta)
1492-PRINTINK-Y (Yellow)
1492-PRINTINK-K (Black)

Replacement Ink Collector Unit:

1492-PRINTCOLLECT

LISTEN.
THINK.
SOLVE.™

Allen-Bradley Spares

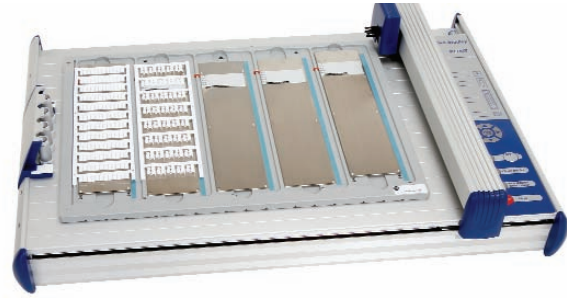
 Allen-Bradley • Rockwell Software

Rockwell
Automation

X-Y Plotter

The Bulletin 1492 X-Y Plotter offers flexible marking capabilities

- Suggested for mid-volume marking needs
- Plotting can be done with etching ink pens or permanent marker
- Offers the capability to mark portions of marker cards as needed



X-Y Plotter



Pre-printed Marker Cards printed with ClearMark Printer

Custom and Pre-printed Marker Cards

For customers with low-volume marking needs, we offer pre-printed and custom marker cards

- These products are created in a Rockwell Automation facility with a ClearMark Printer
- Standard sequences are available from stock and customer-created files are printed on request

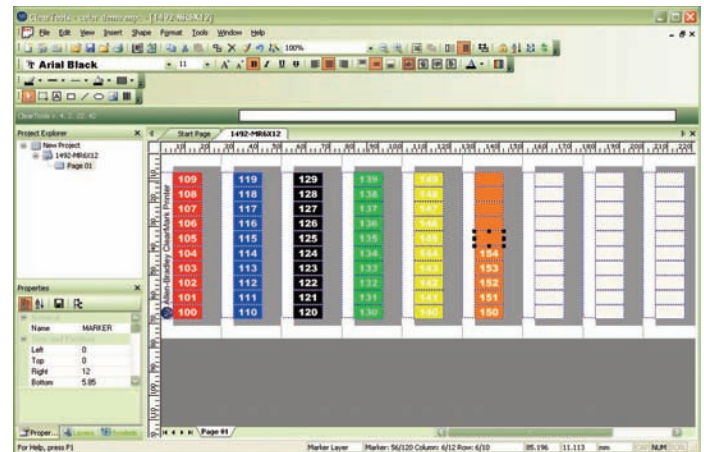
ClearTools Software

Customers can efficiently create markers from basic numbering to sequences and images with ClearTools software.

- Use auto-fill feature to create sequences of data
- Import from a variety of file formats
- Print from the library of symbols or use your own image

Download ClearTools software at:

http://ab.com/industrialcontrols/products/terminal_blocks_and_wiring/marketing_systems_access/marketing_systems_family1.html



ClearTools Software

Allen-Bradley, ClearMark and ClearTools are trademarks of Rockwell Automation.

www.rockwellautomation.com

Power, Control and Information Solutions Headquarters

Americas: Rockwell Automation, 1201 South Second Street, Milwaukee, WI 53204-2496 USA, Tel: (1) 414.382.2000, Fax: (1) 414.382.4444

Europe/Middle East/Africa: Rockwell Automation NV, Pegasus Park, De Kleetlaan 12a, 1831 Diegem, Belgium, Tel: (32) 2 663 0600, Fax: (32) 2 663 0640

Asia Pacific: Rockwell Automation, Level 14, Core F, Cyberport 3, 100 Cyberport Road, Hong Kong, Tel: (852) 2887 4788, Fax: (852) 2508 1846