

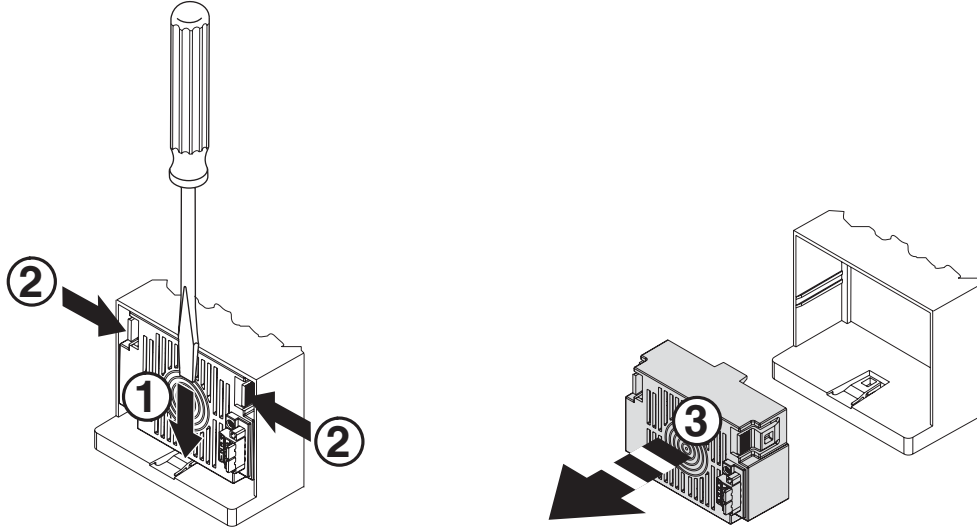


# SMC-3 (108-135A) / SMC-Flex (5-135A) Series B Fan Replacement (150-CF234 / W41391-801-03)

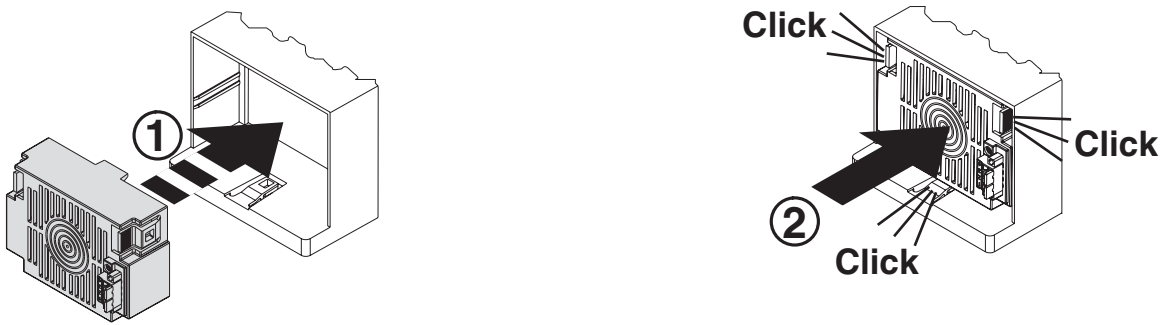


**ATTENTION:** To prevent electrical shock, disconnect from power source before installing or servicing. Install in suitable enclosure. Keep free from contaminants.

## Fan Removal



## Fan Installation



# Allen-Bradley HMIs