

# PRODUCT PROFILE

**BULLETIN 1609-U**

## INDUSTRIAL UNINTERRUPTIBLE POWER SUPPLIES (UPS)

### Bulletin 1609

Clean, dependable power is essential to smooth-running factories – however, many factories are not afforded this luxury. The 1609 family of Industrial DIN Rail-Mounted Uninterruptible Power Supplies (UPS) are intended to help bridge this gap for its customers.

Various applications within a factory require battery back-up. Battery back-up helps to prevent a sudden loss of power that could result in lost data, damaged equipment, and/or extended down time.

### Reliable and Safe

The 1609 is uniquely designed for the industrial market to provide back-up AC power to the control cabinet. The 1609 will provide back-up power to bridge dips, sags, or brief losses of power. If necessary, the 1609 will facilitate a safe shut-down of your industrial PC, PLC, data logging HMI, or any other critical device in the control scheme. Without a 1609 in place, the customer is faced with nuisance power dips, extended down-time, and potential machine damage; all of which can result in significant and costly challenges.



### FEATURES:

#### **Rugged, Industrial Design**

The 1609 can be mounted to a heavy duty DIN rail or to the back of the panel.

#### **Elevated Temperature Performance**

A high temperature battery option allows operation up to 50°C.

#### **Comprehensive Network Management**

The optional Network Management Card (1609-NMC) is monitored via RSView™ or via the on-board web browser. The NMC has many capabilities, including:

- Web Browser Accessible
- Data Logging
- Fault Notification
- Customizable Output Relays
- Remote Device Management
- RsView via SNMP-OPC Driver
- Event logging
- Customizable Input Contacts
- Temperature Monitoring
- Operating System Shutdown

#### **“Dry contact” I/O**

The 1609 has standard relay outputs to signal “Battery On.”

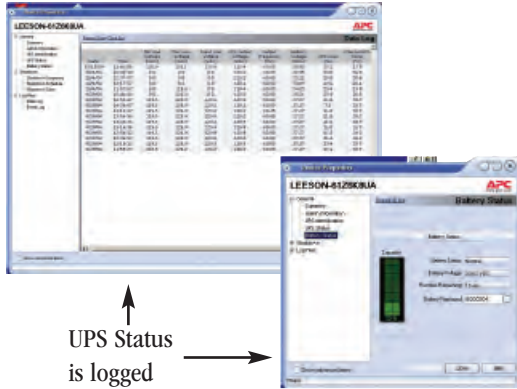
#### **Line Interactive Design**

The 1609 offers optimal performance in an industrial environment.

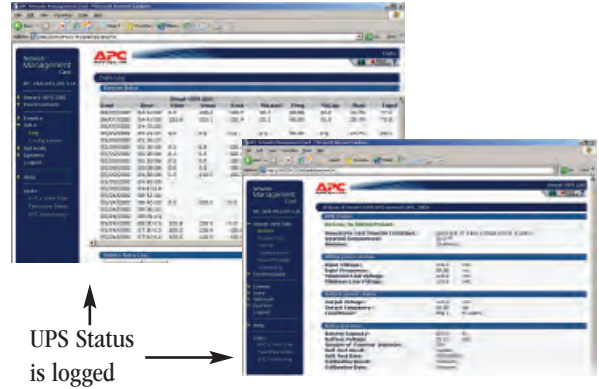
- Offers power conditioning with pure sine wave output
- Features high efficiencies (96%) and extended battery life

# Remote Monitoring and Remote Configuration

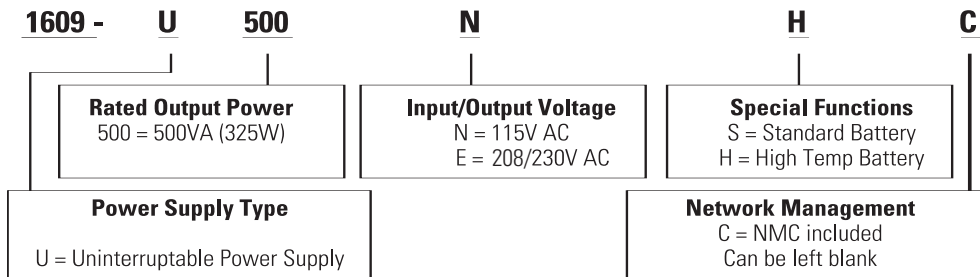
Monitor via Serial Cable / PowerChute™  
(Comes standard with product)



Monitor via Ethernet Web Browser/RSView™  
(Requires optional 1609-NMC)



The networking capabilities of the 1609 UPS allow the end user to remotely configure and monitor the status of individual or multiple UPS devices.



Characteristic	115V Model	208/230V Model
Input voltage (default) (Widen selectable range transfer points)	81V AC...143V AC 75V AC...153V AC	160V AC...287V AC 150V AC...300V AC
Nominal Current	4.12 A	2.2 A
Output voltage (default) (Widen selectable range transfer points)	106V AC...127V AC 97V AC...136V AC	208V AC...253V AC 196V AC...265V AC
Overload Protection	Alarm/Shutdown 107%	Alarm/Shutdown 107%
Battery Run Time	Full Load (325W): 9 min. Half Load (163W): 18 min.	Full Load (325W): 9 min. Half Load (163W): 18 min.
Charge Time	< 3hrs to 90% capacity	< 3hrs to 90% capacity
Operating Temperature: Standard Battery (1609-500SBAT) High Temp Battery (1609-500HBAT)	0...40°C 0...50°C	0...40°C 0...50°C
Dimensions/Weight (HxWxD)	6 x 14.25 x 6" 26 lbs	