

Rockwell Automation introduces the Allen-Bradley POINT I/O™ system, making industrial automation easier than it has ever been before by offering such a simple I/O design.

## A Snap To Apply

The POINT I/O system is so easy. It installs easily by sliding together. It pulls apart easily for maintenance and troubleshooting. It locks into place for a secure fit.

## Choose Your Network Communication Interface

- DeviceNet interface
- DeviceNet interface with 16 points of integrated I/O
- DeviceNet adapter

## Choose Your Own Termination Style

- Spring clamp
- Screw

## Choose Your Own Termination Base

- One simple design

Begin “clicking” your system together on the DIN rail with the dual groove design that provides easy assembly and guidance for insertion and removal. As you insert each base, realize you are building the backplane bus and power distribution system. The bi-directional backplane bus connection utilizes a one-piece design for durability. Most importantly, the bus connection’s contacts are gold plated with 30 micro-inches of gold for long term reliability – no flaking or corrosion after a short period of use. That gives you a longer connection life and higher reliability over standard gold flashed and tin-plated contacts.

## Color is the Key

The POINT I/O system features simple color-coded designs, making it easier to install and maintain:

- The orange mechanical key slot ensures that a given I/O type must align with an 8-position key for proper insertion. This keeps modules from being applied incorrectly or exposed to incorrect signal levels.
- Field power distribution modules are distinguished by a dark gray color. The field distribution module allows you to separate analog signals from digital signals, inputs from outputs, sub-system functional partitioning and system partitioning.
- The terminal base and terminal strips are a light gray. With the I/O modules installed, each assembled piece is easily identified and can be differentiated by the communication interface and field distribution power.

## A Speedy and Simplified Approach

- Wiring is simplified and designed to make your installation easier with removable pieces, such as the removable terminal strip, and providing a separate terminal for every wire.
- You can wire your system by holding the terminal strips in your hand or while mounted to a panel.
- You can decrease your system checkout time by prewiring our removable terminal strips.

continued

# Ease of Use

Included in the design of the terminal strips is the trunion (or latch) that not only locks the terminal strip and I/O module in place, but also provides a mechanism for removing the terminal strips without grasping the wiring. This feature further enhances the benefits of the POINT I/O system by reducing the risk of reliability issues that can occur by pulled wires while maintaining your installed system.



In addition to these easy features, we've included a wiring diagram, module specifications, certifications, catalog number, series and revision information on each I/O module label. This feature obviously facilitates easy initial installation, but more importantly, long after the documentation is "misplaced" — you still have the correct wiring diagram and specifications with each I/O module. We've also included a removable label for each I/O module, which allows you to easily identify location, channel and module descriptions.

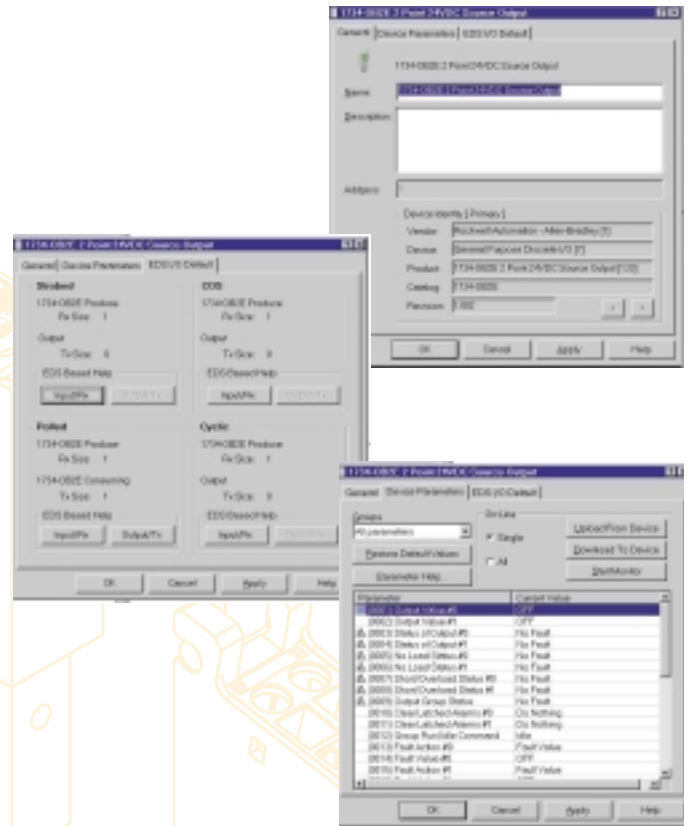
## Cleverly Coordinated

Once you've chosen POINT I/O to address the granular I/O needs of your application, you may decide to add a few points of I/O to expand your systems overall capabilities. When you do that, you don't have to re-map your I/O, so we made it easy for you.

With POINT I/O, you can map your I/O according to an electronic address. This address can be linked directly to a physical location. This makes it easy to determine I/O status and diagnostic feedback from your HMI screen and relate it directly to a specific POINT I/O module - this saves you time, money and troubleshooting of your system over the life cycle of your installation.

## How To Get From Here To There

To pull this all together, we've made configuration of the I/O modules easy using RSNetwork™. RSNetwork allows the user to simply ID (identify) the network and then simply configure the I/O modules. The state-of-the-art design consists of terminal bases, I/O modules, power supplies and network adapters that simply click together to complete an easy system, which translates into making your application simple to configure.



Global certifications ensure that this product is universally applicable and getting support for your POINT I/O solution is easy.