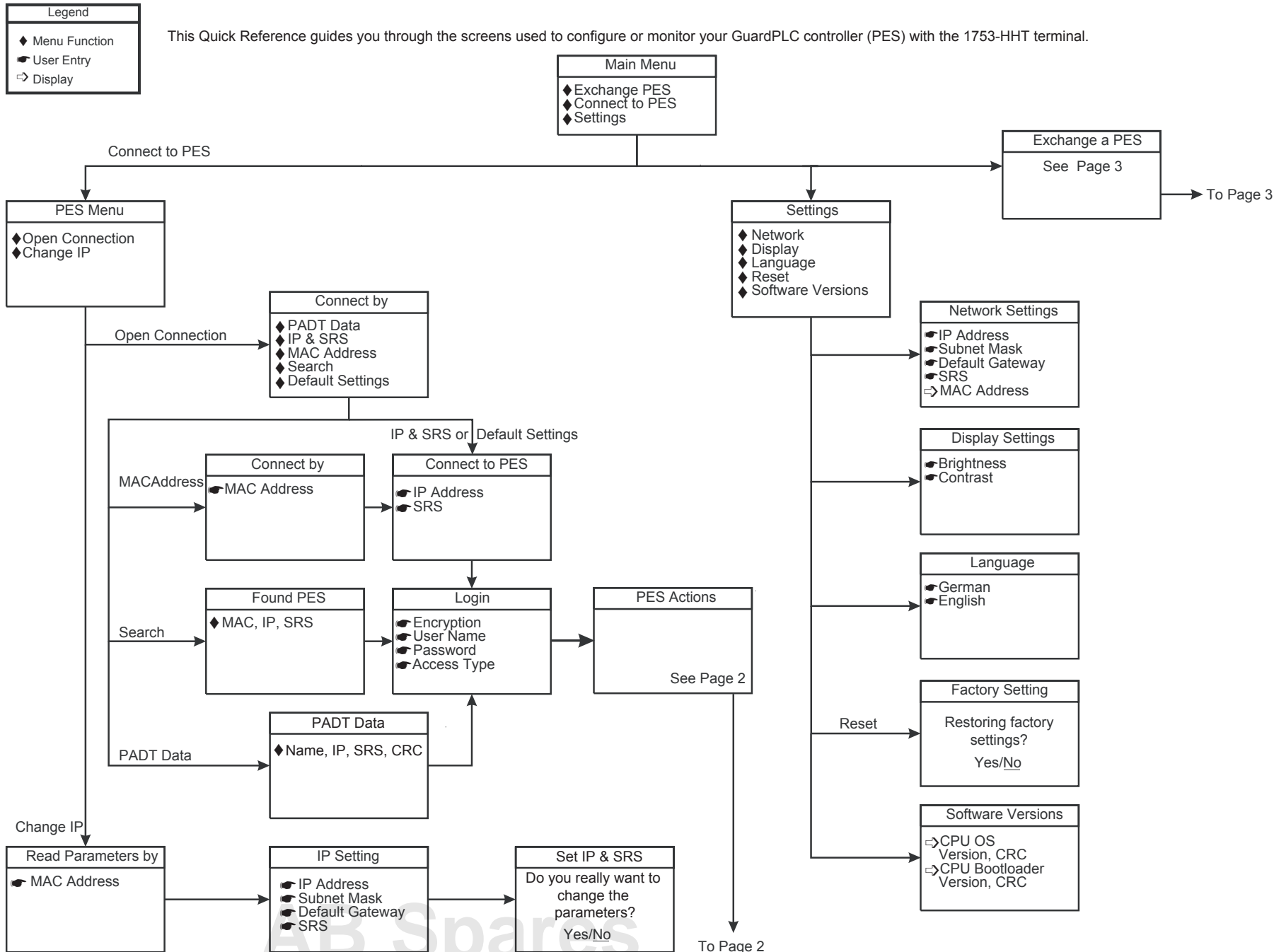
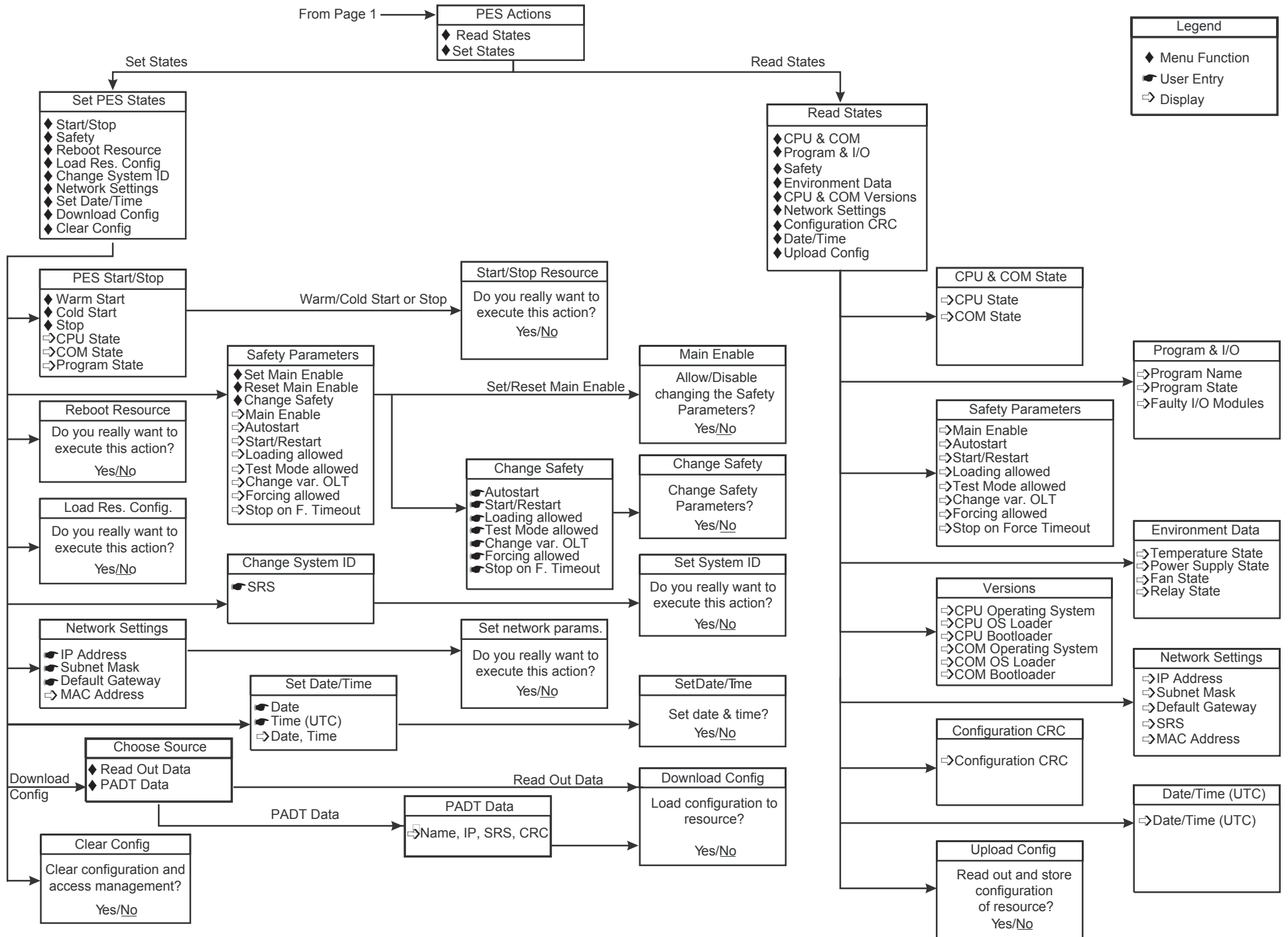
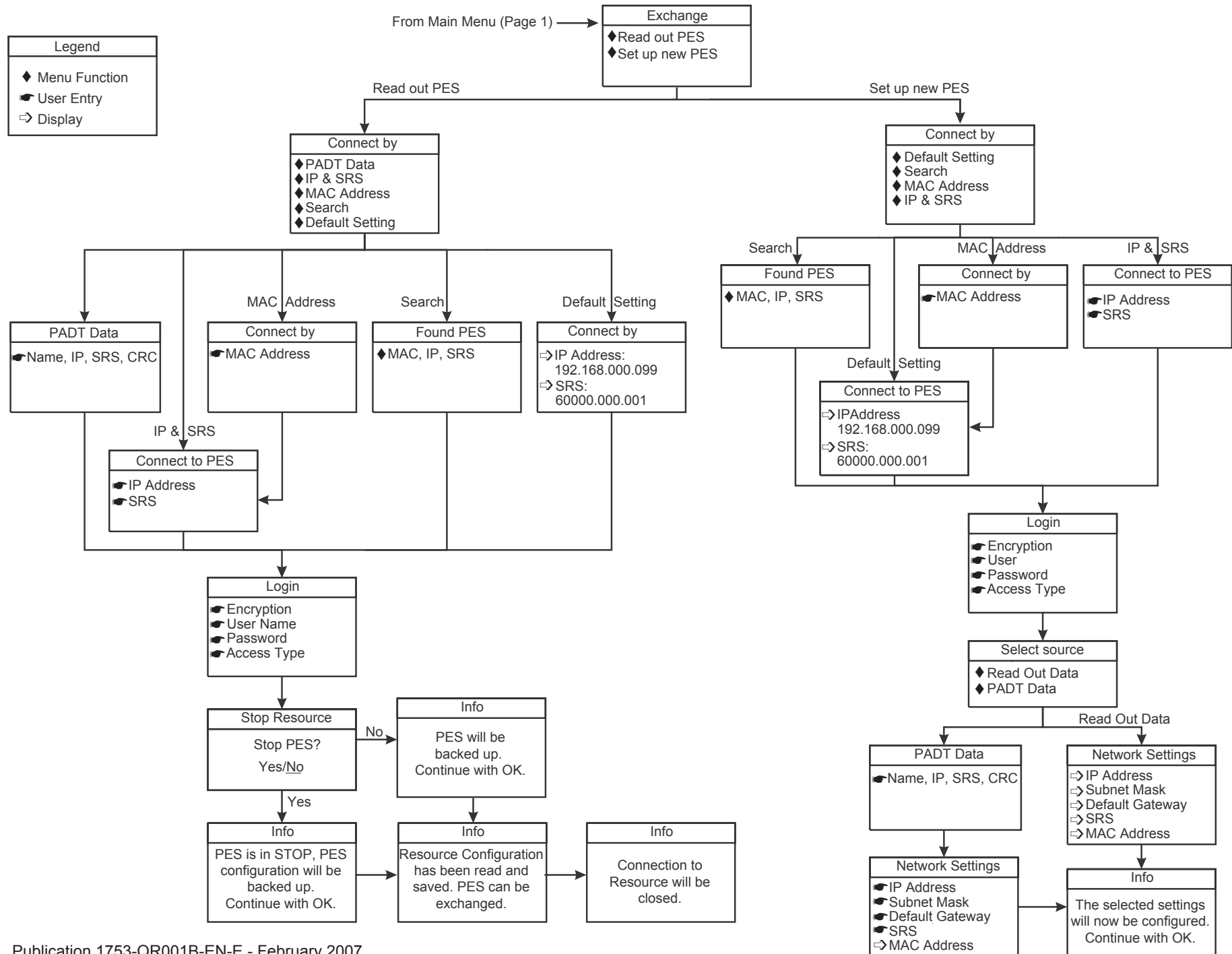


# GuardPLC Hand-held Terminal Menu Structure

This Quick Reference guides you through the screens used to configure or monitor your GuardPLC controller (PES) with the 1753-HHT terminal.







Rockwell Automation is a trademark of Rockwell Automation, Inc.  
Trademarks not belonging to Rockwell Automation are the property of their respective companies.

**[www.rockwellautomation.com](http://www.rockwellautomation.com)**

---

**Power, Control and Information Solutions Headquarters**

Americas: Rockwell Automation, 1201 South Second Street, Milwaukee, WI 53204-2496 USA, Tel: (1) 414.382.2000, Fax: (1) 414.382.4444

Europe/Middle East/Africa: Rockwell Automation, Vorstlaan/Boulevard du Souverain 36, 1170 Brussels, Belgium, Tel: (32) 2 663 0600, Fax: (32) 2 663 0640

Asia Pacific: Rockwell Automation, Level 14, Core F, Cyberport 3, 100 Cyberport Road, Hong Kong, Tel: (852) 2887 4788, Fax: (852) 2508 1846

Publication 1753-QR001B-EN-E - February 2007

Supersedes Publication 1753-QR001A-EN-E - June 2006

Copyright © 2007 Rockwell Automation, Inc. All rights reserved. Printed in the U.S.A.