

ControlLogix ControlNet Interface Module, Firmware Revision 20.013

Catalog Numbers 1756-CN2/B, 1756-CN2R/B

Topic	Page
Software Compatibility	1
Corrected Anomalies with Revision 20.013	4
Restrictions	5
Additional Resources	6

About This Publication

These release notes provide software compatibility requirements and other usage considerations for these modules. See [Additional Resources on page 6](#) for a list of publications that you should use with your modules.

Software Compatibility

To use the 1756-CN2/B and 1756-CN2R/B modules, you need the correct versions of RSLogix 5000 programming software and RSLinx Classic software.

Software	Compatible Version
RSLogix 5000	16.0 or later
RSLinx Classic	2.51 or later

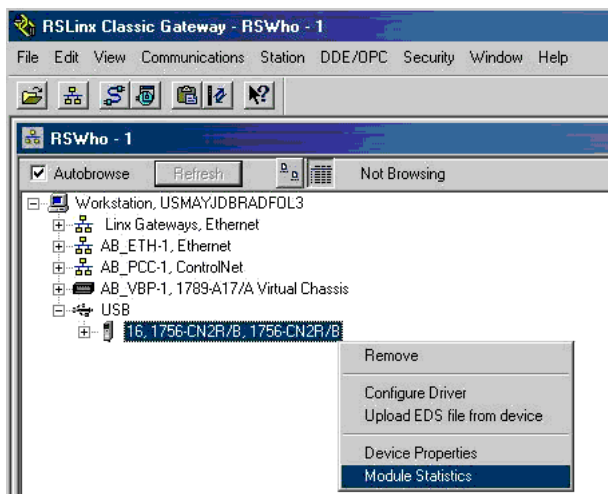
Module Usage Recommendations

When you use these modules, do not update the firmware for more than one module simultaneously through the USB port.

Number of Connections

The module supports a maximum of 131 connections. However, 3 of the 131 connections are always reserved for redundant control. Therefore, 128 connections are available for standard use. Because the connections are reserved, they will always appear in use even when no connections are open.

To access the connection information, right-click the module in the RSWho window of RSLinx Classic software.



The Connection Manager tab contains the connection statistic information.

The screenshot shows the 'USB\16 1756-CN2R Statistics' dialog box with the 'Connection Manager' tab selected. The dialog is divided into several sections:

- Statistics:** A table showing request and reject counts.

	Requests	Format Rejects	Resource Rejects	Other Rejects	Connection Timeouts
Open	4	0	0	2	1
Close	1	0		0	
- Connection Statistics:** Shows 'Total Connections' as 131 and 'Connections Used' as 3. A label 'Connection Utilization' is positioned below these values.
- Buffer Statistics:** Shows 'Max Buffer Size' as 0 and 'Size Remaining' as 0. A label 'Buffer Utilization' is positioned below these values.
- CPU Statistics:** Shows 'CPU Utilization' as 0.1%. A label 'CPU Utilization' is positioned below this value.

Annotations with arrows point to the 'Connections Used' and 'Max Buffer Size' fields:

- An arrow points from the 'Connections Used' field (value 3) to the text: "No connections open (subtract 3 from displayed value)."
- An arrow points from the 'Max Buffer Size' field (value 0) to the text: "No buffer information is displayed. The module has no buffer usage restrictions."

At the bottom of the dialog are buttons for 'Reset Counters', 'Lock Counters', 'OK', 'Cancel', 'Apply', and 'Help'.

Corrected Anomalies with Revision 20.013

These anomalies have been corrected with communication module firmware revision 20.013.

Corrected Anomalies with Revision 20.013

Cat. No.	Description
1756-CN2/B, 1756-CN2R/B	<p>Corrected: A communication fault occurred when the module was in an I/O chassis and configured as rack optimized. In RSLogix 5000 software, the outputs in the chassis go to the states configured for Program mode instead of Fault mode.</p> <p>The workaround previous to being corrected was to use a direct connection instead of a rack optimized connection for the I/O adapter.</p> <p style="text-align: right;">Lgx00105037; Product Notice 2010-04-002</p>
	<p>Corrected: The 1756-CN2x module returned an error to a 'Hold Net Resource' request if the module received the request immediately after responding with success to a previous 'Obtain Network Resource' request.</p> <p>This was not an issue for RSNetWorx software because it waits approximately 15 seconds after the 'Obtain Network Resource' request before issuing a Hold request.</p> <p>The workaround previous to being corrected was to program a short delay between the two requests.</p> <p style="text-align: right;">Lgx00103680</p>
	<p>Corrected: Upon powerup, the OK status indicator of the 1756-CN2x modules may have been red. The module status display indicated one of these messages because the 1756-CN2x modules inaccurately detected the size of the redundant chassis:</p> <ul style="list-style-type: none"> • CmdConnOpen.cpp Line 630 • RMEventLog.cpp Line 841 <p style="text-align: right;">Lgx00082907</p>

Restrictions

These restrictions exist for the 1756-CN2/B and 1756-CN2R/B communication modules at firmware revision 20.013.

Restrictions with Revision 20.013

Cat. No.	Description
1756-CN2/B, 1756-CN2R/B	<p>The 1756-CN2x/B communication module firmware revision 20.13 is not compatible with the 1756-CN2x/A communication module hardware.</p> <hr/> <p>IMPORTANT Do not attempt to upgrade a 1756-CN2x/A communication module with 1756-CN2x/B firmware 20.13. If you attempt this update, the ControlFLASH software displays a severe incompatibility warning.</p> <hr/> <p>Number of Connections The modules support a maximum of 131 connections. However, 3 of the 131 connections are always reserved for redundant control. Therefore, 128 connections are available for standard use. Because the connections are reserved, they will always appear in use even when no connections are open.</p>

Additional Resources

These documents contain additional information related to Rockwell Automation products.

Resource	Description
ControlNet Modules in Logix5000 Control Systems User Manual, publication CNET-UM001	Contains information on how to use ControlNet modules with various Logix5000 controllers.
ControlLogix ControlNet Interface Module Installation Instructions, publication 1756-IN607	Provides information about how to install your modules.
Industrial Automation Wiring and Grounding Guidelines, publication 1770-4.1	Provides general guidelines for installing a Rockwell Automation industrial system.
Product Certifications website, http://www.ab.com	Provides declarations of conformity, certificates, and other certification details.

You can view or download publications at <http://www.rockwellautomation.com/literature/>. To order paper copies of technical documentation, contact your local Rockwell Automation distributor or sales representative.

Notes:

Rockwell Automation Support

Rockwell Automation provides technical information on the Web to assist you in using its products. At <http://www.rockwellautomation.com/support/>, you can find technical manuals, a knowledge base of FAQs, technical and application notes, sample code and links to software service packs, and a MySupport feature that you can customize to make the best use of these tools.

For an additional level of technical phone support for installation, configuration, and troubleshooting, we offer TechConnect support programs. For more information, contact your local distributor or Rockwell Automation representative, or visit <http://www.rockwellautomation.com/support/>.

Installation Assistance

If you experience a problem within the first 24 hours of installation, please review the information that's contained in this manual. You can also contact a special Customer Support number for initial help in getting your product up and running.

United States or Canada	1.440.646.3434
Outside United States or Canada	Use the Worldwide Locator at http://www.rockwellautomation.com/support/americas/phone_en.html , or contact your local Rockwell Automation representative.

New Product Satisfaction Return

Rockwell Automation tests all of its products to ensure that they are fully operational when shipped from the manufacturing facility. However, if your product is not functioning and needs to be returned, follow these procedures.

United States	Contact your distributor. You must provide a Customer Support case number (call the phone number above to obtain one) to your distributor to complete the return process.
Outside United States	Please contact your local Rockwell Automation representative for the return procedure.

Documentation Feedback

Your comments will help us serve your documentation needs better. If you have any suggestions on how to improve this document, complete this form, publication [RA-DU002](#), available at <http://www.rockwellautomation.com/literature/>.

Allen-Bradley, ControlFLASH, ControlLogix, Logix5000, RSNetWorx, RSLink Classic, RSLogix 5000, Rockwell Automation, and TechConnect are trademarks of Rockwell Automation, Inc.

Trademarks not belonging to Rockwell Automation are property of their respective companies.

Rockwell Otomasyon Ticaret A.Ş., Kar Plaza İş Merkezi E Blok Kat:6 34752 İçerenköy, İstanbul, Tel: +90 (216) 5698400

www.rockwellautomation.com

Power, Control and Information Solutions Headquarters

Americas: Rockwell Automation, 1201 South Second Street, Milwaukee, WI 53204-2496 USA, Tel: (1) 414.382.2000, Fax: (1) 414.382.4444
Europe/Middle East/Africa: Rockwell Automation NV, Pegasus Park, De Kleetlaan 12a, 1831 Diegem, Belgium, Tel: (32) 2 663 0600, Fax: (32) 2 663 0640
Asia Pacific: Rockwell Automation, Level 14, Core F, Cyberport 3, 100 Cyberport Road, Hong Kong, Tel: (852) 2887 4788, Fax: (852) 2508 1846

Publication 1756-RN630B-EN-P - December 2010

PN-100619

Supersedes Publication 1756-RN630A-EN-P - February 2008

Copyright © 2010 Rockwell Automation, Inc. All rights reserved. Printed in the U.S.A.