

ControlLogix-XT Data Highway Plus-Remote I/O Communication Interface Module

Catalog Number 1756-DHRIOXT

Topic	Page
Restrictions With the 1756-DHRIOXT/E Module	1
Replacing a Traditional 1756-DHRIO, Series E Module	2
Replacing a Traditional 1756-DHRIO, Series B, C, or D, Module	2
Software Compatibility	3
Browsing to the 1756-DHRIOXT/E in RSLinx Software	3
Configure the Module in RSLogix 5000 Software	4
Additional Resources	7

Restrictions With the 1756-DHRIOXT/E Module

You must use 1756-DHRIO firmware revision 7.x, or later, with this module. This module cannot be used with 1756-DHRIO firmware revisions earlier than 7.x. That is, you cannot use firmware revision 6.x or earlier with this module.

Replacing a Traditional 1756-DHRIO, Series E Module

You may use a 1756-DHRIOXT/E module as a replacement for a traditional 1756-DHRIO/E module. However, before you replace the traditional module with a 1756-DHRIOXT/E module, see the ControlLogix-XT Data Highway Plus-Remote I/O Communication Interface Module installation instructions, publication [1756-IN638](#), for usage considerations.

Replacing a Traditional 1756-DHRIO, Series B, C, or D, Module

You may use the 1756-DHRIOXT/E module as a replacement for a 1756-DHRIO, series B, C, or D, module. However, before you replace your 1756-DHRIO, series B, C, or D, module with a 1756-DHRIOXT module, you should:

- see the ControlLogix-XT Data Highway Plus-Remote I/O Communication Interface Module Installation Instructions, publication [1756-IN638](#), for usage considerations.
- consult this table to determine if network-specific considerations must be made.

If a series B, C, or D module uses	Make this consideration
DH+	If a routing table existed in the old 1756-DHRIO module, make sure the same routing table is downloaded to the replacement module.
RIO	To perform a failed module replacement, the module keying in specified in RSLogix 5000 software must be set to compatible .

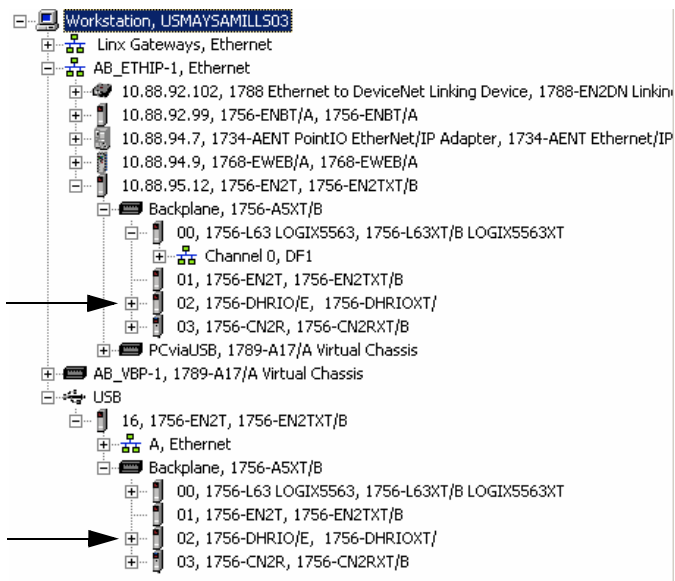
Software Compatibility

RSLinx software, version 2.55, is required for use with the 1756-DHRIOXT/E module. If you do not use version 2.55, the 1756-DHRIOXT/E module will not properly display in the network.

Browsing to the 1756-DHRIOXT/E in RSLinx Software

Browse to the 1756-DHRIOXT/E module by using RSLinx software, version 2.55 or later, as you would any other ControlLogix module.

This is an example of how the 1756-DHRIOXT/E module appears in RSLinx software.



Configure the Module in RSLogix 5000 Software

If you are using only the DH+ network, remember that you are not required to add the 1756-DHRIO icon to the I/O Configuration tree in RSLogix 5000 programming software.

If you are using the RIO network, complete these steps to add and configure the 1756-DHRIOXT/E module to your I/O Configuration tree in RSLogix 5000 software.

1. Launch RSLogix 5000 programming software and open a new project.
2. Use this table as a reference to specify the appropriate Controller Properties for your controller and chassis.

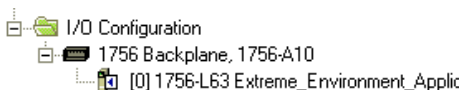
If using a	In field	Specify this value
1756-L63XT controller	Type	1756-L63 ControlLogix5563 Controller
1756-A5XT chassis	Chassis Type	Any ControlLogix chassis with more than four slots (that is, a 1756-A7 or larger)
1756-A7LXT chassis		

3. Specify the remaining properties according to your application requirements and click OK.

The screenshot shows the 'New Controller' dialog box with the following configuration:

- Vendor: Allen-Bradley
- Type: 1756-L63 ControlLogix5563 Controller
- Revision: 17
- Redundancy Enabled:
- Name: Extreme Environment Application
- Description: (empty text box)
- Chassis Type: 1756 A10 10 Slot ControlLogix Chassis
- Slot: 0 (Safety Partner Slot)
- Create In: C:\RSLogix 5000\Projects

The resulting I/O Configuration tree is created as shown here.

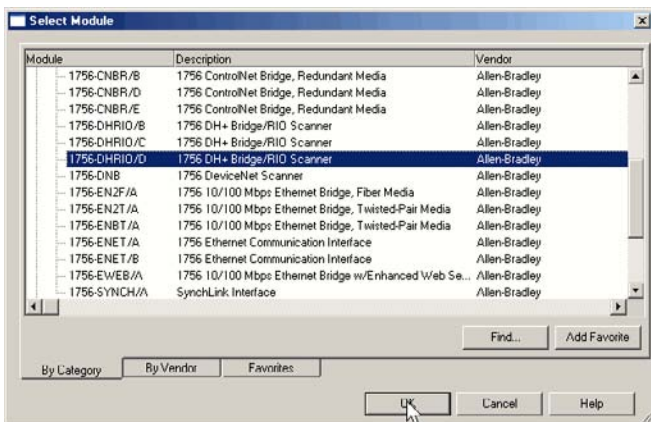


- Right-click the backplane and choose New Module.



- From the list of Communication modules, select the 1756-DHRIO/D module and click OK.

If you are not using RSLogix 5000, version 15 or later, you may select any other 1756-DHRIO module available.



6 ControlLogix-XT DHRIO Module

6. From the Electronic Keying pull-down menu, select Compatible Keying.



For more information about electronic keying for a series E module, see Rockwell Automation Knowledgebase (<http://www.rockwellautomation.com/knowledgebase/>) Answer ID 59656.

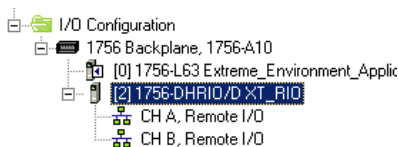
7. Specify the remaining module properties as your application requires and click OK.

IMPORTANT

Specify the slot number that corresponds to the module's placement in your ControlLogix-XT chassis. For example, if you are using a 1756-A5XT chassis and have placed the 1756-DHRIOXT/E module in slot 2 of the chassis, specify slot 2 in the module's properties.

Any ControlLogix-XT module's slot should not be higher than the number of slots in the ControlLogix-XT chassis used. For example, if you are using a 1756-A5XT chassis and have specified a 1756-A10 chassis for your project, no modules should be configured for slots 5 and higher.

The 1756-DHRIOXT/E module is now in the I/O Configuration tree and appears as a 1756-DHRIO/D module.



The addition and configuration of your 1756-DHRIOXT/E module in RSLogix 5000 programming software is complete.

Additional Resources

Resource	Description
Rockwell Automation Knowledgebase (http://www.rockwellautomation.com/knowledgebase/), Answer ID 59656	Describes how to configure a 1756-DHRIO/E module by using RSLogix 5000 software, version 17, where there is no 1756-DHRIO/E module in the module selection list.
ControlLogix-XT Data Highway Plus-Remote I/O Communication Interface Module Installation Instructions, publication 1756-IN638	Provides installation procedures, wiring and connection procedures, and technical specifications specific to the 1756-DHRIOXT module.
ControlLogix Data Highway Plus-Remote I/O Communication Interface Module User Manual, publication 1756-UM514	This publication provides application, configuration, and troubleshooting procedures for the module.

You can view or download publications at <http://literature.rockwellautomation.com>. To order paper copies of technical documentation, contact your local Rockwell Automation distributor or sales representative.

Rockwell Automation Support

Rockwell Automation provides technical information on the Web to assist you in using its products. At <http://support.rockwellautomation.com>, you can find technical manuals, a knowledge base of FAQs, technical and application notes, sample code and links to software service packs, and a MySupport feature that you can customize to make the best use of these tools.

For an additional level of technical phone support for installation, configuration, and troubleshooting, we offer TechConnect support programs. For more information, contact your local distributor or Rockwell Automation representative, or visit <http://support.rockwellautomation.com>.

Installation Assistance

If you experience a problem within the first 24 hours of installation, please review the information that's contained in this manual. You can also contact a special Customer Support number for initial help in getting your product up and running.

United States	1.440.646.3434 Monday – Friday, 8 a.m. – 5 p.m. EST
Outside United States	Please contact your local Rockwell Automation representative for any technical support issues.

New Product Satisfaction Return

Rockwell Automation tests all of its products to ensure that they are fully operational when shipped from the manufacturing facility. However, if your product is not functioning and needs to be returned, follow these procedures.

United States	Contact your distributor. You must provide a Customer Support case number (call the phone number above to obtain one) to your distributor in order to complete the return process.
Outside United States	Please contact your local Rockwell Automation representative for the return procedure.

Allen-Bradley, ControlLogix, ControllLogix-XT, Data Highway +, DH+, RSLinx, RSLogix 5000, Rockwell Automation, and TechConnect are trademarks of Rockwell Automation, Inc.

Trademarks not belonging to Rockwell Automation are property of their respective companies.

www.rockwellautomation.com

Power, Control and Information Solutions Headquarters

Americas: Rockwell Automation, 1201 South Second Street, Milwaukee, WI 53204-2496 USA, Tel: (1) 414.382.2000, Fax: (1) 414.382.4444
Europe/Middle East/Africa: Rockwell Automation, Vorstlaan/Boulevard du Souverain 36, 1170 Brussels, Belgium, Tel: (32) 2 663 0600, Fax: (32) 2 663 0640
Asia Pacific: Rockwell Automation, Level 14, Core F, Cyberport 3, 100 Cyberport Road, Hong Kong, Tel: (852) 2887 4788, Fax: (852) 2508 1846

Publication 1756-RN667A-EN-P - April 2009

PN-36826

Copyright © 2009 Rockwell Automation, Inc. All rights reserved. Printed in the U.S.A.