

ControlLogix Analog Servo Modules, Firmware Revision 19

Catalog Numbers 1756-HYD02, 1756-M02AE, 1756-M02AS

When to Use These Release Notes

Use these release notes for information about firmware revisions.

Module	Cat. No.	Firmware Revision
ControlLogix 2-axis Hydraulic Servo Module	1756-HYD02	19.2
ControlLogix 2-axis Analog Encoder Servo Module	1756-M02AE	19.2
ControlLogix 2-axis Analog SSI Servo Module	1756-M02AS	19.2

IMPORTANT

Before updating your ControlLogix Analog Servo Modules, we strongly recommend that you review information pertinent to previous major firmware revisions. For example, when updating from revision 18.xx to 19.xx, view information in the ControlLogix Analog Servo Modules, Revision 18 Release Notes, publication [1756-RN670](#), in addition to the content of these release notes.

Compatible Versions of Software

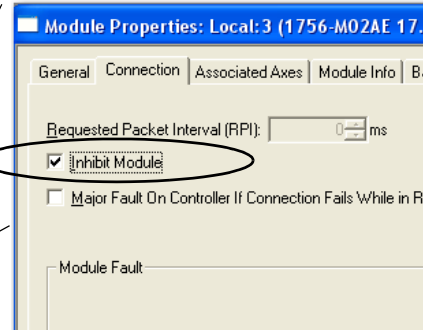
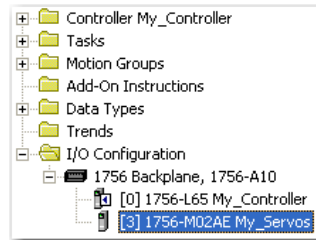
To use firmware revisions 19.2, these minimum software versions are required.

Software	Required Version
RSLink Classic	2.57 (CPR 9, SR3)
RSLink Enterprise	5.30 (CPR 9, SR3)
RSLogix 5000	19.00 (CPR 9, SR3)
ControlLogix controller	19.xx
RSNetWorx for ControlNet	10.01 (CPR 9, SR2)
RSNetWorx for DeviceNet	
RSNetWorx for EtherNet/IP	

Before You Begin



ATTENTION: Before you upgrade the firmware of your module, you must inhibit the module.



This disables the axes and makes updating the module easier.

Known Anomalies

This anomaly has been identified with the ControlLogix 2-axis Analog SSI Servo Module, catalog number 1756-M02AS, firmware revision 19.2.

Table 1 - Known Anomalies with Firmware Revision 19

Anomaly	Description
If you issue an Absolute Feedback Offset, it results in a Feedback Fault.	<p>If you issue an Absolute Feedback Offset via a Set System Value (SSV) instruction on the 1756-M02AS module, the result is a feedback fault. The feedback fault occurs regardless of whether feedback is on or off.</p> <p>IMPORTANT: This anomaly affects the 1756-M02AS module only.</p> <p>Lgx00076298</p>

Additional Resources

For more information on using the ControlLogix Analog Servo Modules, see these publications.

Publication Title	Publication Number
ControlLogix Analog Servo Modules, Firmware Revision 18 Release Notes, publication 1756-RN670	Information about firmware revision 18.
ControlLogix Hydraulic Servo Module User Manual, publication 1756-UM525	Install, configure, and operate a 1756-HYD02 hydraulic servo module.
SERCOS and Analog Motion Configuration and Startup User Manual, publication MOTION-UM001	Install, configure, and operate 1756-M02AE and 1756-M02AS analog modules.

You can view or download Rockwell Automation publications at <http://www.rockwellautomation.com/literature/>.

These documents contain additional information concerning related Rockwell Automation products.

Resource	Description
Industrial Automation Wiring and Grounding Guidelines, publication 1770-4.1	Provides general guidelines for installing a Rockwell Automation industrial system.
Product Certifications website, http://www.ab.com	Provides declarations of conformity, certificates, and other certification details.

You can view or download publications at <http://www.rockwellautomation.com/literature/>. To order paper copies of technical documentation, contact your local Rockwell Automation distributor or sales representative.

Allen-Bradley

Rockwell Automation Support

Rockwell Automation provides technical information on the Web to assist you in using its products. At <http://www.rockwellautomation.com/support/>, you can find technical manuals, a knowledge base of FAQs, technical and application notes, sample code and links to software service packs, and a MySupport feature that you can customize to make the best use of these tools.

For an additional level of technical phone support for installation, configuration, and troubleshooting, we offer TechConnect support programs. For more information, contact your local distributor or Rockwell Automation representative, or visit <http://www.rockwellautomation.com/support/>.

Installation Assistance

If you experience a problem within the first 24 hours of installation, review the information that is contained in this manual. You can contact Customer Support for initial help in getting your product up and running.

United States or Canada	1.440.646.3434
Outside United States or Canada	Use the Worldwide Locator at http://www.rockwellautomation.com/support/americas/phone_en.html , or contact your local Rockwell Automation representative.

New Product Satisfaction Return

Rockwell Automation tests all of its products to ensure that they are fully operational when shipped from the manufacturing facility. However, if your product is not functioning and needs to be returned, follow these procedures.

United States	Contact your distributor. You must provide a Customer Support case number (call the phone number above to obtain one) to your distributor to complete the return process.
Outside United States	Please contact your local Rockwell Automation representative for the return procedure.

Documentation Feedback

Your comments will help us serve your documentation needs better. If you have any suggestions on how to improve this document, complete this form, publication [RA-DU002](#), available at <http://www.rockwellautomation.com/literature/>.

Allen-Bradley, Rockwell Software, Rockwell Automation, TechConnect, ControlLogix, RSLogix Classic, RSLogix Enterprise, RSLogix 5000, RSNetWorx for ControlNet, RSNetWorx for DeviceNet, and RSNetWorx for EtherNet/IP are trademarks of Rockwell Automation, Inc.

Trademarks not belonging to Rockwell Automation are property of their respective companies.

Rockwell Otomasyon Ticaret A.Ş., Kar Plaza İş Merkezi E Blok Kat:6 34752 İçerenköy, İstanbul, Tel: +90 (216) 5698400

www.rockwellautomation.com

Power, Control and Information Solutions Headquarters

Americas: Rockwell Automation, 1201 South Second Street, Milwaukee, WI 53204-2496 USA, Tel: (1) 414.382.2000, Fax: (1) 414.382.4444

Europe/Middle East/Africa: Rockwell Automation NV, Pegasus Park, De Kleetlaan 12a, 1831 Diegem, Belgium, Tel: (32) 2 663 0600, Fax: (32) 2 663 0640

Asia Pacific: Rockwell Automation, Level 14, Core F, Cyberport 3, 100 Cyberport Road, Hong Kong, Tel: (852) 2887 4788, Fax: (852) 2508 1846

Publication 1756-RN679A-EN-P - September 2010

PN-85424

Copyright © 2010 Rockwell Automation, Inc. All rights reserved. Printed in the U.S.A.