

# ControlLogix Analog Servo Modules, Firmware Revision 20

Catalog Numbers 1756-HYD02, 1756-M02AE, 1756-M02AS

## When to Use These Release Notes

Use these release notes for information about the following firmware revisions.

Module	Cat. No.	Firmware Revision
ControlLogix® 2-axis Hydraulic Servo Module	1756-HYD02	20.001
ControlLogix 2-axis Analog Encoder Servo Module	1756-M02AE	20.002
ControlLogix 2-axis Analog SSI Servo Module	1756-M02AS	20.001

### IMPORTANT

Before updating your ControlLogix Analog Servo Modules, we strongly recommend that you review information pertinent to previous major firmware revisions.

For example, when updating from revision 19.xx to 20.xx, view information in the ControlLogix Analog Servo Modules, Revision 19 Release Notes, publication [1756-RN679](#), in addition to the content of these release notes.

## Compatible Versions of Software

To use firmware revisions 20.001 and 20.002, these minimum software versions are required.

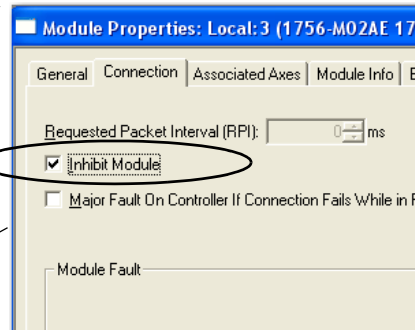
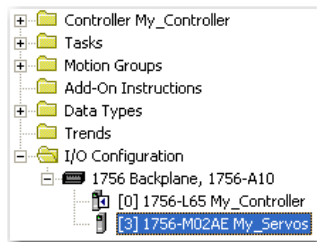
**Table 1 - Compatible Software Versions**

Software	Required Version
RSLinX® Classic	2.59 (CPR 9, SR5)
RSLinX Enterprise	5.50 CPR 9, SR5)
RSLogix™ 5000	20.00 (CPR 9, SR5)
ControlLogix controller	20.xx
RSNetWorx™ for ControlNet	11.00 (CPR 9, SR5)
RSNetWorx for DeviceNet	
RSNetWorx for EtherNet/IP	

## Before You Begin



**ATTENTION:** Before you upgrade the firmware of your module, you must inhibit the module.



This disables the axes and makes updating the module easier.

## Known Anomalies

This anomaly has been identified with the ControlLogix 2-axis Analog SSI Servo Module, catalog number 1756-M02AS, firmware revision 20.001.

**Table 2 - Known Anomalies with Firmware Revision 20.001**

Anomaly	Description
If you issue an Absolute Feedback Offset, it results in a Feedback Fault.	If you issue an Absolute Feedback Offset via a Set System Value (SSV) instruction on the 1756-M02AS module, the result is a feedback fault. The feedback fault occurs regardless of whether feedback is on or off.  <b>IMPORTANT:</b> This anomaly affects the 1756-M02AS module only.  Lgx00076298

## Additional Resources

These documents contain additional information concerning related products from Rockwell Automation.

Publication	Description
ControlLogix Analog Servo Modules, Firmware Revision 18 Release Notes, publication <a href="#">1756-RN670</a>	Provides information about firmware revision 18.
ControlLogix Analog Servo Modules, Firmware Revision 19 Release Notes, publication <a href="#">1756-RN679</a>	Provides information about firmware revision 19.
ControlLogix Hydraulic Servo Module User Manual, publication <a href="#">1756-UM525</a>	Describes how to install, configure, and operate a 1756-HYD02 hydraulic servo module.
SERCOS and Analog Motion Configuration and Startup User Manual, publication <a href="#">MOTION-UM001</a>	Describes how to install, configure, and operate 1756-M02AE and 1756-M02AS analog modules.
Industrial Automation Wiring and Grounding Guidelines, publication <a href="#">1770-4.1</a>	Provides the general guidelines for installing a Rockwell Automation® industrial system.
Product Certifications website, <a href="http://www.ab.com">http://www.ab.com</a>	Provides the declarations of conformity, certificates, and other certification details.

You can view or download publications at <http://www.rockwellautomation.com/literature/>. To order paper copies of technical documentation, contact your local Allen-Bradley® distributor or Rockwell Automation® sales representative.

# Allen-Bradley Drives

## Rockwell Automation Support

Rockwell Automation provides technical information on the Web to assist you in using its products.

At <http://www.rockwellautomation.com/support>, you can find technical manuals, technical and application notes, sample code and links to software service packs, and a MySupport feature that you can customize to make the best use of these tools. You can also visit our Knowledgebase at <http://www.rockwellautomation.com/knowledgebase> for FAQs, technical information, support chat and forums, software updates, and to sign up for product notification updates.

For an additional level of technical phone support for installation, configuration, and troubleshooting, we offer TechConnect<sup>SM</sup> support programs. For more information, contact your local distributor or Rockwell Automation representative, or visit <http://www.rockwellautomation.com/support/>.

## Installation Assistance

If you experience a problem within the first 24 hours of installation, review the information that is contained in this manual. You can contact Customer Support for initial help in getting your product up and running.

United States or Canada	1.440.646.3434
Outside United States or Canada	Use the <a href="http://www.rockwellautomation.com/support/americas/phone_en.html">Worldwide Locator</a> at <a href="http://www.rockwellautomation.com/support/americas/phone_en.html">http://www.rockwellautomation.com/support/americas/phone_en.html</a> , or contact your local Rockwell Automation representative.

## New Product Satisfaction Return

Rockwell Automation tests all of its products to ensure that they are fully operational when shipped from the manufacturing facility. However, if your product is not functioning and needs to be returned, follow these procedures.

United States	Contact your distributor. You must provide a Customer Support case number (call the phone number above to obtain one) to your distributor to complete the return process.
Outside United States	Please contact your local Rockwell Automation representative for the return procedure.

## Documentation Feedback

Your comments will help us serve your documentation needs better. If you have any suggestions on how to improve this document, complete this form, publication [RA-DU002](#), available at <http://www.rockwellautomation.com/literature/>.

Allen-Bradley, Rockwell Automation, RSLinx, RSLogix, RSNetWorx, ControlLogix, Rockwell Software, and TechConnect are trademarks of Rockwell Automation, Inc.

Trademarks not belonging to Rockwell Automation are property of their respective companies.

**[www.rockwellautomation.com](http://www.rockwellautomation.com)**

### Power, Control and Information Solutions Headquarters

Americas: Rockwell Automation, 1201 South Second Street, Milwaukee, WI 53204-2496 USA, Tel: (1) 414.382.2000, Fax: (1) 414.382.4444

Europe/Middle East/Africa: Rockwell Automation NV, Pegasus Park, De Kleetlaan 12a, 1831 Diegem, Belgium, Tel: (32) 2 663 0600, Fax: (32) 2 663 0640

Asia Pacific: Rockwell Automation, Level 14, Core F, Cyberport 3, 100 Cyberport Road, Hong Kong, Tel: (852) 2887 4788, Fax: (852) 2508 1846

Publication 1756-RN692A-EN-P - December 2011

PN-131937

Copyright © 2011 Rockwell Automation, Inc. All rights reserved. Printed in the U.S.A.