



# ProcessLogix R400.0 Server Installation Instructions

## Before you begin

This publication guides you through the remaining processes required to initialize a ProcessLogix Server. You are required to finalize the Server installation by completing the instructions outlined in this document.

This document does not contain complete instructions covering the installation process, and refers you to procedures contained in other documentation. For a successful installation, have the following documents available:

- *ControlNet PCI Communication Interface Card Installation Instructions*, publication 1784-IN003. This publication ships with the 1784-PCIC card.
- *ProcessLogix R400.0 Installation and Upgrade Guide*, publication 1757-IN040. This publication can be found in the ProcessLogix Software Kit.

These and other ProcessLogix documents can be found on The Automation Bookstore, at <http://www.theautomationbookstore.com/>.

<b>For information regarding:</b>	<b>See page:</b>
Important User Information	2
Installing the 1784-PCIC Card	3
Installing the Windows 2000 license and Warranty Transfer	4
Logging on to Windows 2000	5
Configuring the 1784-PCIC Card	5
Changing the PC name	5
Changing the network settings	6
Setting the date and time	6
Creating an Emergency Repair disk	6
Installing the RSLinx Activation File	7
Changing the ProcessLogix License	8
Server Specifications	9

## Important User Information

Because of the variety of uses for the products described in this publication, those responsible for the application and use of these products must satisfy themselves that all necessary steps have been taken to assure that each application and use meets all performance and safety requirements, including any applicable laws, regulations, codes and standards. In no event will Allen-Bradley be responsible or liable for indirect or consequential damage resulting from the use or application of these products.

Any illustrations, charts, sample programs, and layout examples shown in this publication are intended solely for purposes of example. Since there are many variables and requirements associated with any particular installation, Allen-Bradley does not assume responsibility or liability (to include intellectual property liability) for actual use based upon the examples shown in this publication.

Allen-Bradley publication SGI-1.1, *Safety Guidelines for the Application, Installation and Maintenance of Solid-State Control* (available from your local Allen-Bradley office), describes some important differences between solid-state equipment and electromechanical devices that should be taken into consideration when applying products such as those described in this publication.

Reproduction of the contents of this copyrighted publication, in whole or part, without written permission of Rockwell Automation, is prohibited.

Throughout this publication, notes may be used to make you aware of safety considerations. The following annotations and their accompanying statements help you to identify a potential hazard, avoid a potential hazard, and recognize the consequences of a potential hazard:

---

### ATTENTION



Identifies information about practices or circumstances that can lead to personal injury or death, property damage, or economic loss.

---

### IMPORTANT

Identifies information that is critical for successful application and understanding of the product.

---

## Rockwell Automation Technical Support

If you need any assistance with the information found in this document, first call your local Rockwell Automation representative, then:

- Phone Support: (440) 646-5800
- Web Support: <http://www.ab.com>, under Support, click Product Support

## Your Questions or Comments about this Manual

If you find a problem with this manual, please use the How are We Doing? form located in the Documentation section of Knowledge Builder to notify us.

## Installing the 1784-PCIC Card

The 1784-PCIC is purchased separately from the ProcessLogix Server. Refer to the *ControlNet PCI Communication Interface Card Installation Instructions*, publication 1784-IN003, for complete installation details.

## Installing the Windows 2000 license and Warranty Transfer

1. Turn on the computer.
2. Click the I accept this agreement option and click Next.
3. Verify the information on the Regional Settings window and click Next.
4. Enter the appropriate Name and Organization and click Next.
5. Enter your Windows 2000 Server Product Key and click Next.
6. At the Date and Time Settings window:
  - If necessary, adjust the Date and Time settings.
  - Set the appropriate Time Zone for your location.
  - Uncheck the Automatically adjust clock for daylight saving changes option.
  - Click Next.

---

**ATTENTION**

Failure to uncheck the Automatic adjustment for Daylight Savings Time will cause Redundant Systems to lose “Sync” when the time is automatically adjusted. Choosing not to automatically adjust the time allows you to decide when to make the adjustment (at a time that is not critical to your process).

---

7. At the Windows 2000 Setup window, click Restart Now.

If there is a delay click Restart Now, setup will automatically restart the PC.

8. In order to receive support from Dell, you must fill out their warranty transfer form. The U.S. Ownership Transfer Form is only available online at:

[http://support.dell.com/us/en/emaiddell/cc\\_opt08.asp](http://support.dell.com/us/en/emaiddell/cc_opt08.asp)

The International Unit Location Transfer Form is only available online at:

[http://support.dell.com/us/en/emaiddell/cc\\_opt11.asp](http://support.dell.com/us/en/emaiddell/cc_opt11.asp)

---

## Logging on to Windows 2000

1. Press <Ctrl> + <Alt> + <Delete> to initiate Windows 2000 logon.
2. Enter >ps\_user< as the User name.
3. Press <Tab> and enter >password< as the default password.
4. Press <Enter> to complete the logon.

**TIP**

You must repeat the above steps every time you reboot the Server.

## Configuring the 1784-PCIC Card

Refer to “1784-PCIC Driver and Firmware Installation” in the *ProcessLogix R400.0 Installation and Upgrade Guide* for details.

## Changing the PC name

Refer to “Changing the Computer Name on a ProcessLogix Server” in the *ProcessLogix R400.0 Installation and Upgrade Guide*.

**IMPORTANT**

- The Factory default of your PC Name is PLX1. If you have more than 1 PC on the same network, you must make certain that the PC names and addresses are unique (i.e. PLX1, PLX2).
-

## Changing the network settings

1. Right click the My Network Places icon on the Desktop and select Properties.
2. Right click the Local Area Connection icon and select Properties.
3. Select Internet Protocol (TCP/IP) and click Properties.

Refer to Step 18 of “Completing the Windows 2000 Server Installation” in the *ProcessLogix R400.0 Installation and Upgrade Guide* for details.

## Setting the date and time

To correctly set the date and time:

1. Click Start ⇒ Settings ⇒ Control Panel.
2. Double-click the Date/Time icon.
3. At the Date and Time Settings window:
  - If necessary, adjust the Date and Time settings.
  - Set the appropriate Time Zone for your location.
  - Uncheck the Automatically adjust clock for daylight saving changes option.
  - Click Next.

---

### ATTENTION



Failure to uncheck the Automatic adjustment for Daylight Savings Time will cause Redundant Systems to loose “Sync” when the time is automatically adjusted. Choosing not to automatically adjust the time allows you to decide when to make the adjustment (at a time that is not critical to your process).

---

## Creating an Emergency Repair disk

1. Click Start ⇒ Programs ⇒ Accessories ⇒ System Tools ⇒ Backup.
2. Click Emergency Repair Disk.
3. Follow the on-screen prompts to create an Emergency Repair disk.

---

## Installing the RSLinx Activation File

---

**ATTENTION**

Before attempting to move the activation file, you **MUST** exit all ProcessLogix applications and stop all ProcessLogix services. For details on this procedure, refer to “Stopping ProcessLogix Applications and Services” in the *ProcessLogix R400.0 Installation and Upgrade Guide*.

---

Your ProcessLogix Server is factory loaded with RSLinx Lite. To activate RSLinx OEM (necessary for full functionality of ProcessLogix) do the following:

1. Locate the RSLinx Master Disk (located in the RSLinx OEM package contained in the Server box) and insert it into the floppy drive.
2. Click Start ⇒ Run.
3. Key this path into the Open field or use Browse to navigate to the Evmove.exe file on the diskette:  
  
>A: (or your floppy drive letter)\EVMOVE.EXE<
4. Click OK to launch the move.
5. In the dialog box that appears, confirm that your “From Drive” field refers to your floppy drive (A:) and that your “To Drive” field refers to the hard drive where RSLinx is resident (C:). Click OK to initiate the move.
6. Click Move to move the file to the hard drive. Wait for a dialog box to give a successful move indication, and click OK to exit.
7. Remove the Master Disk from your floppy drive and store it in a safe place.

**TIP**

If you need to reformat your computer’s hard drive, you must first move the evrsi.sys file back to this Master Disk using this same procedure; otherwise, the file will be corrupted.

## Changing the ProcessLogix License

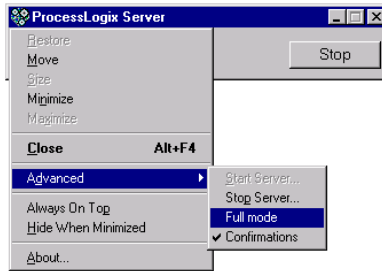
The ProcessLogix Server is shipped with a temporary license. You must enter the system ID and authorization numbers from the supplied license certificate to activate the license options that you have ordered. To change the license:

1. Click Start⇒Programs⇒ProcessLogix Server⇒Start-Stop ProcessLogix Server to call up the ProcessLogix Server dialog box.

### TIP



To display the “Full Mode” version of the ProcessLogix Server dialog box, click the icon on the left of the title bar and click Advanced ⇒ Full Mode.



A checkmark will appear in front of the Full Mode selection to show that it is active.

- a. With Full Mode active, click the Database Only option.
  - b. Click Yes to confirm the action and wait for the Server to change its state.
  - c. Close the ProcessLogix Server dialog box.
2. Click Start⇒Programs⇒ProcessLogix Server⇒Setup.
  3. At the Welcome window, click Next.
  4. Check the Change software license checkbox and click Next.
  5. Enter the new System and Authorization numbers and click Next.
  6. Click Next to confirm.
  7. If the license includes a new database size, click Yes in the Rebuild Database dialog box.



8. When completed, uncheck the Start ProcessLogix Server checkbox and click Finish.
9. Reboot the computer.

To verify your license:

1. Click Start ⇒ Programs ⇒ ProcessLogix Server ⇒ Setup.
2. At the Welcome window, click Next.
3. Select the View software license details checkbox and click Next.
4. If there is a discrepancy between the ordered options, and the options presented, call Rockwell Automation Technical Support at (440) 646-5800.

## Server Specifications

Component	Description
Base	Dell PowerEdge 1400
Processor	1 GHz/133 256K Cache, Pentium III
Mouse	Logitech System Mouse
Keyboard	Quietkey 104-Key, 6 Pin
System RAM	384MB, DIMM, 133MHz 16x72, 168
CD-ROM	20/48X Black, Compact Disk Drive, IDE
Floppy Drive	1.44MB, F3, NEC P 1400
Hard Drive	18GB 10K, 68P
Tape Drive	20/40G, Tape Backup Unit, Power Vault 100T, DD54
Network	Intel Pro 100 Plus, NIC
I/O Expansion	6 PCI
Operating System	Microsoft Windows 2000 Server, 5 Client Access Licenses, NTFS, All hardware component drivers

**Notes:**

**Notes:**

ProcessLogix, ControlNet, and Allen-Bradley are trademarks of Rockwell Automation.

Windows 2000 is a registered trademark of Microsoft Corporation.

Dell is a registered trademark of Dell Computer Corporation.

RSLinux is a trademark of Rockwell Software, Inc.

**[www.rockwellautomation.com](http://www.rockwellautomation.com)**

**Corporate Headquarters**

Rockwell Automation, 777 East Wisconsin Avenue, Suite 1400, Milwaukee, WI, 53202-5302 USA, Tel: (1) 414.212.5200, Fax: (1) 414.212.5201

**Headquarters for Allen-Bradley Products, Rockwell Software Products and Global Manufacturing Solutions**

Americas: Rockwell Automation, 1201 South Second Street, Milwaukee, WI 53204-2496 USA, Tel: (1) 414.382.2000, Fax: (1) 414.382.4444

Europe: Rockwell Automation SA/NV, Vorstlaan/Boulevard du Souverain 36-BP 3A/B, 1170 Brussels, Belgium, Tel: (32) 2 663 0600, Fax: (32) 2 663 0640

Asia Pacific: Rockwell Automation, 27/F Citicorp Centre, 18 Whitfield Road, Causeway Bay, Hong Kong, Tel: (852) 2887 4788, Fax: (852) 2508 1846

**Headquarters for Dodge and Reliance Electric Products**

Americas: Rockwell Automation, 6040 Ponders Court, Greenville, SC 29615-4617 USA, Tel: (1) 864.297.4800, Fax: (1) 864.281.2433

Europe: Rockwell Automation, Brühlstraße 22, D-74834 Elztal-Dallau, Germany, Tel: (49) 6261 9410, Fax: (49) 6261 17741

Asia Pacific: Rockwell Automation, 55 Newton Road, #11-01/02 Revenue House, Singapore 307987, Tel: (65) 351 6723, Fax: (65) 355 1733

**Publication 1757-IN914A-EN-P - October 2001**

**PN 957555-40**

© 2001 Rockwell Automation. All rights reserved. Printed in the U.S.A.