



ProcessLogix R400.0 Service Patch 1.2

Quick Builder R2.0 Build 442

This document describes the following:

- contents of Service Patch 1.1
- installation of this update
- problems resolved in this update
- known problems in this update

IMPORTANT

- ProcessLogix™ R400.0 Service Patch 1.2 (SP1.2) is independent of ProcessLogix R400.0 Service Pack 1 (SP1) and ProcessLogix R400.0 Service Patch 1.1 (SP1.1).
 - Prior installation of SP1 or SP1.1 is not required for installation of SP1.2, however, it is recommended that you install SP1 and SP1.1 before installing this patch.
 - SP1.2 should be installed on all R400.0 Servers and Clients that require Quick Builder.
-

Contents of Patch

This patch contains the following software:

- Quick Builder R2.0 Build 442

Installation and Migration

This section details the installation of this patch and the migration of projects for this patch.

IMPORTANT

This update of Quick Builder has only been qualified for use with ProcessLogix R400.0.

Before You Begin

Before beginning the installation, you must download the QuickBuilder R2.0 Build 442.exe file to your ProcessLogix Server(s) and Client(s) that require Quick Builder.

Spare Allen-Bradley Parts

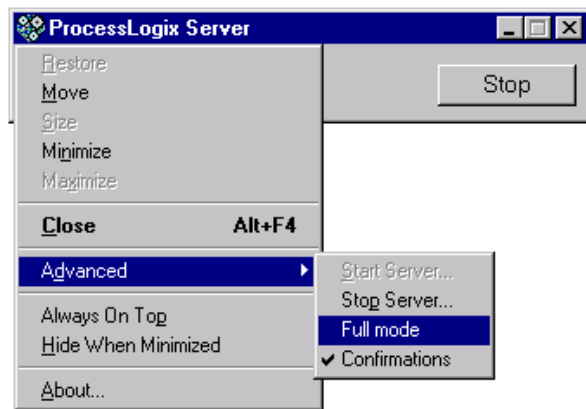
Server Installation

If you have a redundant Server pair, you must complete the following procedure on SERVERB first, then repeat the procedure for SERVERA. Be certain that SERVERA is the Primary Server before beginning the installation.

1. Click Start⇒Programs⇒ProcessLogix Server⇒Start-Stop ProcessLogix Server to call up the ProcessLogix Server dialog box.

TIP

To display the “Full Mode” version of the ProcessLogix Server dialog box, click the icon on the left of the title bar and click Advanced⇒Full Mode.



A checkmark will now appear in front of the Full Mode selection to show that it is active.

- a. With the Full Mode version of the dialog box active, click the Database Unloaded option.
 - b. Click Yes to confirm the action and wait for the Server to change its state.
 - c. Close the ProcessLogix Server dialog box.
2. Using Windows® Explorer, go to the directory where the patch was download, double-click Quick Builder R2.0 Build 442.exe and click OK to extract the files to C:\Honeywell\Quick Builder R2.0 Build 442.
 3. Click Start ⇒Programs ⇒ProcessLogix Server ⇒Setup.
 4. At the Welcome window, click Next.

5. Check the Install ProcessLogix Server software option and click Next.
6. Check Quick Builder, and make sure no other options are checked, then click Next.
7. If you are prompted about unloading the ProcessLogix Server database, click Yes.
8. If you are prompted about replacing a version of Quick Builder, click Yes.
9. At the Confirmation window, click Next.
10. When prompted for a path, browse to C:\Honeywell\Quick Builder R2.0 Build 442 and click OK, then click OK again.
11. At the Setup Complete window, click the Yes, I want to restart my computer now option and click Finish.

The PC automatically restarts.

12. Press <Ctrl>+<Alt>+<Delete> to prompt the logon information.
13. Logon as ps_user.
14. Repeat steps 1–13 on SERVERA.
15. After completing steps 1–13 on both SERVERA and SERVERB, verify that SERVERA is now Primary and synchronize the Servers.
16. The C:\Honeywell\Quick Builder R2.0 Build 442 directory can now be deleted.

Client Installation

Update Existing Clients

The following procedure can be used on client machines that already have R400.0 Quick Builder installed.

1. Using Windows® Explorer, go to the directory where the patch was download, double-click Quick Builder R2.0 Build 442.exe and click OK to extract the files to C:\Honeywell\Quick Builder R2.0 Build 442.

2. Click Start ⇒Run.

3. Key in the following path:

```
>"C:\Honeywell\Quick Builder R2.0 Build 442\setup.exe"<
```

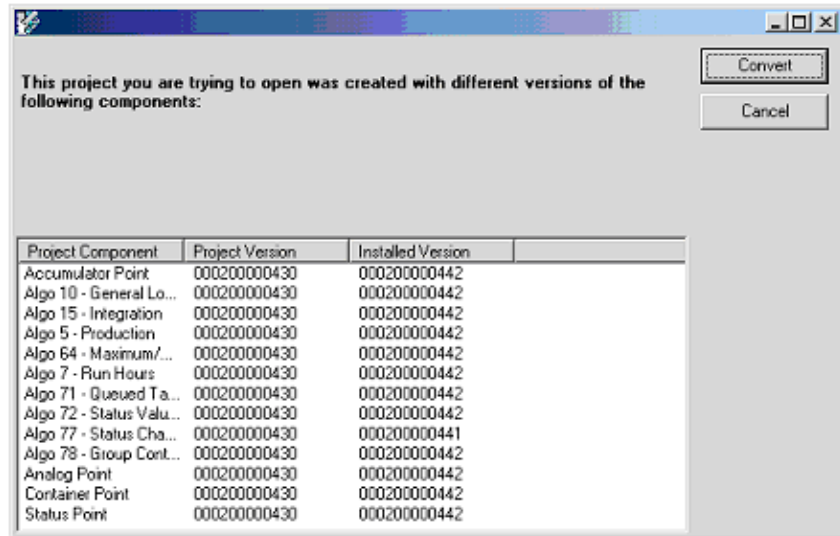
4. Click OK to launch the Quick Builder installation.
5. Click OK at the Install Shield prompt.
6. At the Welcome window, click Next.
7. Verify the User Name and Organization.
8. Click the Anyone who uses this computer option and click Next.
9. Click the Complete option and click Next.
10. Click Install.
11. When the installation is complete, click Finish.
12. The C:\Honeywell\Quick Builder R2.0 Build 442 directory can now be deleted.

Update New Clients

To install this patch on a client that does not have any ProcessLogix client software installed, follow the Clean Install instructions in Chapter 5 of the ProcessLogix R400.0 Installation and Upgrade Guide to install everything but Quick Builder (e.g. Station, System Displays, etc.). After installing the ProcessLogix Client software, follow the procedure to Update Existing Clients, on page 4.

Migration

When opening Quick Builder R2.0 Build 430 projects with this patch, a window similar to the following may open.



1. Click Convert to continue the migration process.
2. Follow the on-screen prompts to complete migration.

TIP



If your project database is large it may take up to 60 minutes to complete the migration.

Spare Allen-Bradley Parts

Problems Resolved in this Patch

This section lists those problems resolved since Quick Builder R2.0 Build 430.

Table 1 Resolved Problems

ISR	ProductDescription
31589	UMB Wizard fails with "Unsuccessful Operation" message
28808	F6 parameter of Algo 4 get's exported as zero if a point is not entered
31542	Algo 78 inhibit states are not exported correctly.
31606	Exporting multiple points with algos attached only export the first algo and skips the rest
28934	When importing an existing point that doesn't have User Defined data, existing User Defined data is not removed.
30290	Errors reported when importing points with algos 92 and 71 attached.
32647	Algo77 exports in older, preISR19706 format.
31872	Uploading a selected item with algos attached fails to import algos.

Known Problems in this Patch

This section lists known problems in Quick Builder R2.0 Build 442.

Table 2 Know Problems in Quick Builder

ISR	Description	Workaround
27112	When pasting from Excel sometimes data doesn't update	Click on point in list to update component.
28069	Closing QB project may bring up old invalid properties dialog	Ignore message
32998	Extension fields are not migrated when migrating post QB R300 databases to newer versions	Get HSC to do the migration.
27208	If a Station (or item) is downloaded while the server is starting up, QB locks up.	Don't download after changing state of the Server from "Database" to "System Running". Wait till the server is ready.
28021	If two QB applications are open, QB may crash when items are downloaded.	Use one QB application at a time.
28057	No consistency check is done when a Remote download with local paths is specified in the server item.	Ensure download path is consistent with remote server.
28390	Downloading a point (in area 980 - 999) with algo 77 gives pntbld syntax errors	Don't use area 980 - 999

Table 2 Know Problems in Quick Builder

ISR	Description	Workaround
28160	Properties not shown if Property Pane not large enough, even if enlarged when displayed.	Make sure the properties pane is large enough before selecting the item.
28696	"General Arithmetic" algo (#4) does not allow any param of a point to be used.	
33049	When a user-defined parameter is assigned to history they do not appear to trend	The problem is that no range information can be entered for user-defined parameters. The workaround is to use a multi range trend and enter the following ranges. INT2 32768 to 32768 INT4 2147483648 to 2147483648 REAL 1e+038 to 1e+038

ProcessLogix is a trademark of Rockwell Automation.

Windows is a registered trademark of Microsoft Corporation.

www.rockwellautomation.com

Power, Control and Information Solutions Headquarters

Americas: Rockwell Automation, 1201 South Second Street, Milwaukee, WI 53204-2496 USA, Tel: (1) 414.382.2000, Fax: (1) 414.382.4444

Europe/Middle East/Africa: Rockwell Automation, Vorstlaan/Boulevard du Souverain 36, 1170 Brussels, Belgium, Tel: (32) 2 663 0600, Fax: (32) 2 663 0640

Asia Pacific: Rockwell Automation, Level 14, Core F, Cyberport 3, 100 Cyberport Road, Hong Kong, Tel: (852) 2887 4788, Fax: (852) 2508 1846

Publication 1757-RN039A-EN-P - May 2002

PN 957689-25

Copyright © 2002 Rockwell Automation. All rights reserved. Printed in the U.S.A.