



## CP7 Adapter

Cat. No. 1784-CP7

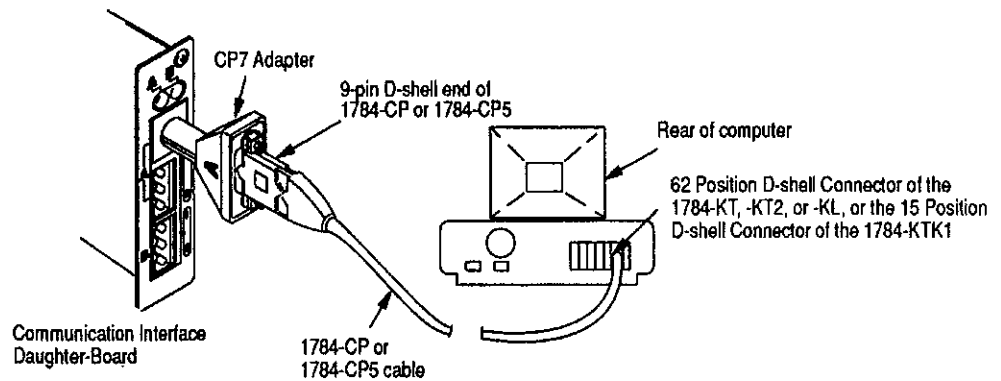
### Installation Data

#### To the Installer

Use the CP7 adapter to connect a personal computer to a communication interface daughterboard (Figure 1). The daughterboard provides the communication to your Data Highway Plus network and can be found in devices such as:

- Allen-Bradley family programmable controllers
- motion control devices

**Figure 1**  
Using the CP7 Adapter to Connect a Personal Computer to a Communication Interface Daughterboard



With this computer:	And this interface:	Use this cable or cable combination CCAT. No. 1
IBM-AT/XT compatible computer	1784-KTK1	1784-CP5 and 1784-CP7
	1784-KT	1784-CP6 or 1784-CP and 1784-CP7
Allen-Bradley 1784-T35 or -T50 industrial terminal	1784-KTK1	1784-CP and 1784-CP7
	1784-KT	1784 CP6 or 1784-CP and 1784-CP7
Allen-Bradley 1784-T45 or -T47 industrial terminal	1784-KL	1784-CP6 or 1784-CP and 1784-CP7
IBM PS/2 device	1784-KT2	1784-CP6 or 1784-CP and 1784-CP7

Refer to your devices user's manual for the location of the daughterboard.

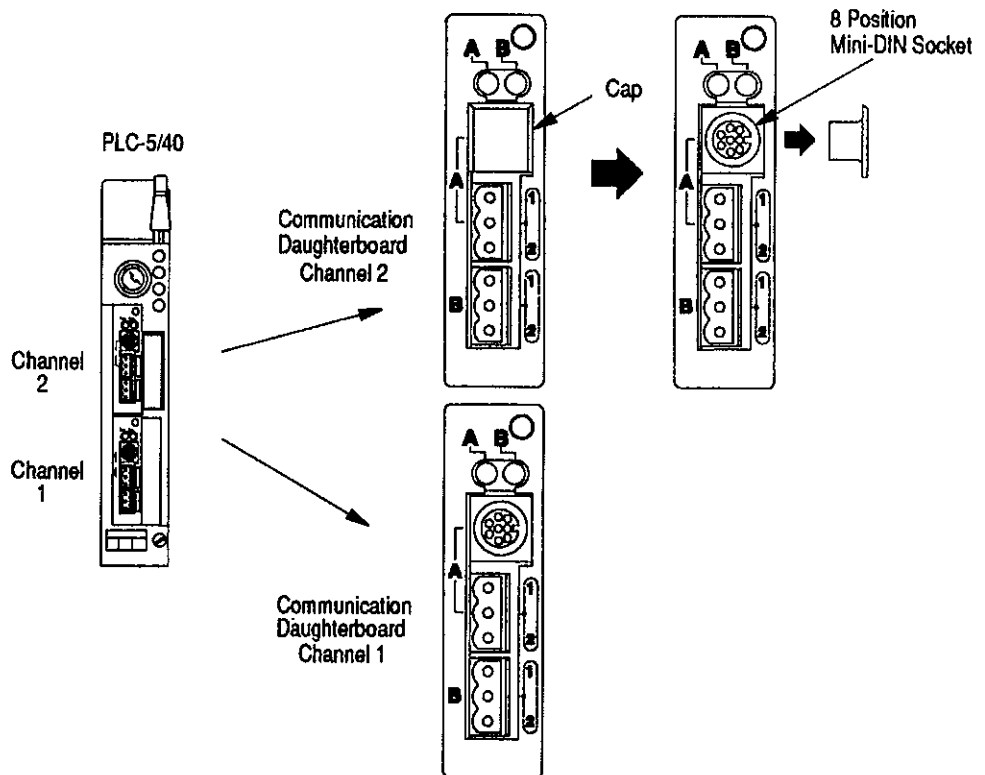
**Important:** You can use the Allen-Bradley 1784-CP6 cable in place of your 1784-CP cable when connecting a computer to a communication interface daughterboard. You do not need the CP7 adapter when using the 1784-CP6 cable. For more information on the 1784-CP6 cable, refer to the CP6 Cable Installation Data Sheet (publication 1784-2.26)

## Installing the CP7 Adapter

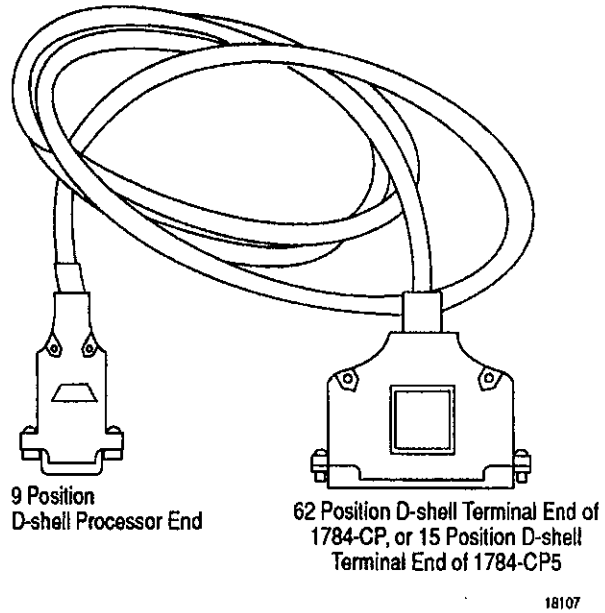
To install the CP7 adapter, follow the steps below:

7. Locate the communication interface daughterboard and remove the cap covering the 8 position mini-DIN socket.

**Important:** Save this cap; you will need to re-insert it when the socket is not in use.



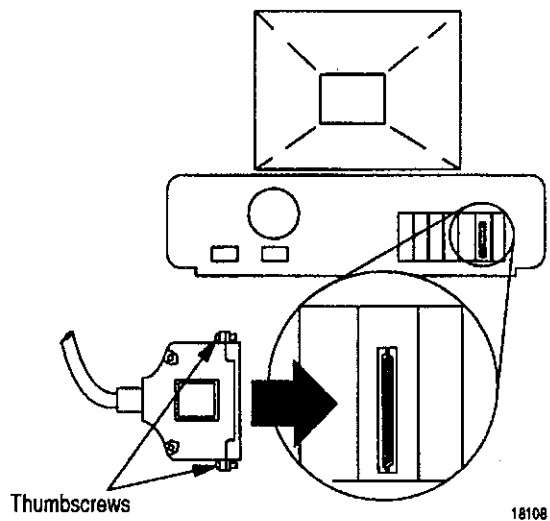
8. Locate the 1784-CP or 1784-CP5 cable.



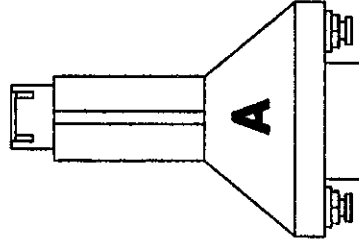
9. Connect the cable to your computer terminal's interface module

If you are using this cable:	Plus this end into your terminal's interface module:
1784-CP	62 position D-shell terminal end
1784-CP5	15 position D-shell terminal end

Turn the thumbscrews clockwise until they come to a complete stop.

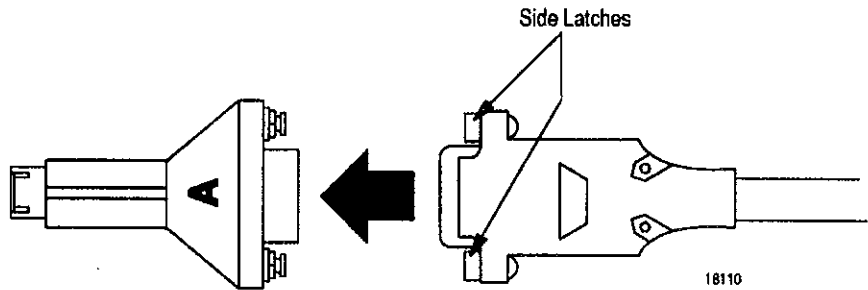


10. Locate the CP7 adapter.



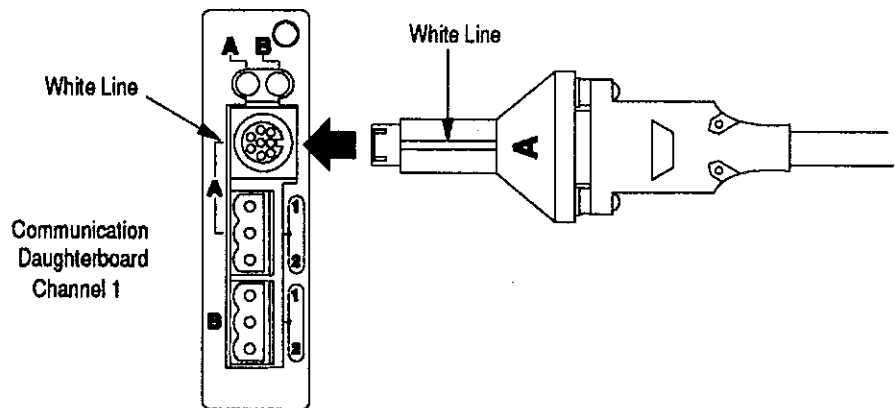
18109

11. Plug the cable into the adapter and secure the side latches.



18110

12. Plug the adapter into the 8 position mini-DIN socket communication daughterboard channel 1. Make sure the white line on the adapter lines up with the white line on the face-plate.



18111

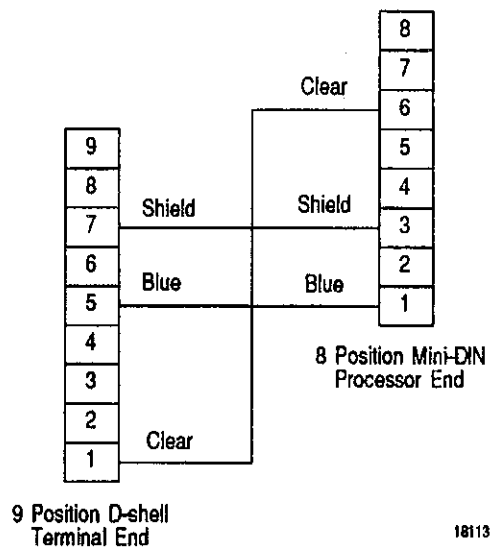
**Important:** Do not plug the CP7 adapter into communication daughterboard channel 2.

The cable is now connected with channel 1A of the communication interface daughterboard channel 1.

**Important:** Allen-Bradley's PLC-5/40 and -5/60 family programmable controllers have two communication interface daughterboards. If you are connecting the adapter to a PLC-5/40 or -5/60, you can use the socket of either daughterboard; however, you are only connected with the channel A of the daughterboard in use.

## Cable Pinouts

Cable pinouts for the CP7 adapter are shown below.



## Specifications

Specifications for the CP7 adapter are listed below.

<b>Storage Temperature</b>	40° to 185°F (-40 to +85°C)
<b>Operating Temperature</b>	32° to 140°F (0 to 60°C)
<b>Humidity</b>	0° to 95% noncondensing



**ALLEN-BRADLEY**  
A ROCKWELL INTERNATIONAL COMPANY

As a subsidiary of Rockwell International, one of the world's largest technology companies — Allen-Bradley meets today's challenges of industrial automation with over 85 years of practical plant-floor experience. More than 11,000 employees throughout the world design, manufacture and apply a wide range of control and automation products and supporting services to help our customers continuously improve quality, productivity and time to market. These products and services not only control individual machines but integrate the manufacturing process, while providing access to vital plant floor data that can be used to support decision-making throughout the enterprise.

With offices in major cities worldwide

**WORLD**

**HEADQUARTERS**

Allen-Bradley  
1201 South Second Street  
Milwaukee, WI 53204 USA  
Tel: (1) 414 382-2000  
Telex: 43 11 016  
FAX: (1) 414 382-4444

**EUROPE/MIDDLE**

**EAST/AFRICA**

**HEADQUARTERS**

Allen-Bradley Europe B.V.  
Amsterdamsweg 15  
1422 AC Uithoorn  
The Netherlands  
Tel: (31) 2975/43500  
Telex: (844) 18042  
FAX: (31) 2975/60222

**ASIA/PACIFIC**

**HEADQUARTERS**

Allen-Bradley (Hong Kong)  
Limited  
Room 1006, Block B, Sea  
View Estate  
28 Watson Road  
Hong Kong  
Tel: (852) 887-4788  
Telex: (780) 64347  
FAX: (852) 510-9436

**CANADA**

**HEADQUARTERS**

Allen-Bradley Canada  
Limited  
135 Dundas Street  
Cambridge, Ontario N1R  
5X1  
Canada  
Tel: (1) 519 623-1810  
FAX: (1) 519 623-8930

**LATIN AMERICA**

**HEADQUARTERS**

Allen-Bradley  
1201 South Second Street  
Milwaukee, WI 53204 USA  
Tel: (1) 414 382-2000  
Telex: 43 11 016  
FAX: (1) 414 382-2400