

PCMK Communication Card

Installing CardWare Software in Windows 95

(Cat. No. 1784-6.5.19-RN1)

Important: At the time of this release note’s publication, the PCMK card is not compatible with the Windows 95 “plug-and-play” feature.

Introduction

Use this release note if you are installing CardWare software and one of the statements below is true.

Your computer is currently using:

- Windows 95™ (non-upgrade version) *and* has never used any other operating system
- a Windows 95 upgrade from MS-DOS™ 6.0 (or later), Windows™ 3.1, or Windows 3.11
- MS-DOS 6.0 (or later), Windows 3.1, or Windows 3.11 *and* will be upgrading to Windows 95

For information about	See page
installing CardWare software before upgrading to Windows 95	2
preparing to install CardWare software in Windows 95	2
installing CardWare software in Windows 95	7

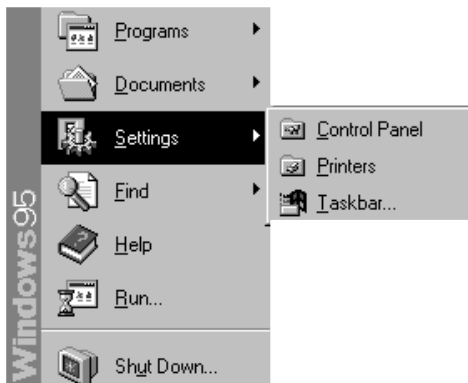
Before CardWare Software and Windows 95 Installation

If you are not currently operating under Windows 95 but are going to upgrade to it, install CardWare software *before* Windows 95. Refer to the PCMK Communication Card User Manual for the CardWare installation procedure. After CardWare is in place on your computer, install Windows 95.

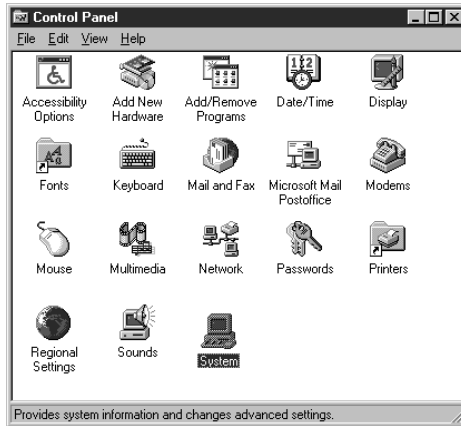
Windows 95 CardWare Software Pre-Installation

Windows 95 comes with PCMCIA Card and Socket Services. The Windows 95 Card and Socket Services do not support the PCMK card; therefore, these services must be disabled before you install CardWare software and the PCMK card. To disable the Windows 95 PCMCIA Card and Socket Services:

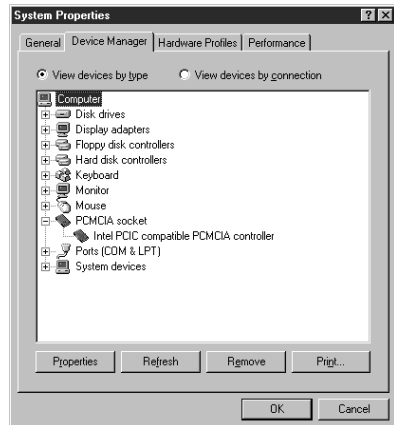
1. Remove your PCMCIA card from the computer.
2. Locate the Device Manager by clicking on:
 - a. Start
 - b. Settings
 - c. Control Panel



- d. From the control panel, select System.



3. In the System Properties window, click on the **Device Manager** tab.



4. If you see any items branching from the PCMCIA socket, disable them by highlighting the item and clicking on the Remove button. In this example, you would delete Intel PCIC compatible PCMCIA controller. If you do not see any items branching from the PCMCIA socket in your Device Manager, move on to the next section.

Backup System and Configuration Files


Before installing CardWare, you should make backups of specific system and configuration files that exist on your hard disk. If you are installing CardWare in a Windows 95 upgrade, you need to make backups of your CONFIG.SYS, AUTOEXEC.BAT, SYSTEM.INI, and WIN.INI files. If you are installing CardWare in a non-upgrade version of Windows 95, you only need to make backups of the two .INI files mentioned above.

1. Start MS-DOS by clicking:
 - a. Start
 - b. Programs
 - c. MS-DOS Prompt











2. From your hard disk's prompt, type:

cd\ 

md backup 

3. Type the lines shown in the table below.

If you are using a	Type these lines
Windows 95 upgrade	<pre> move config.sys \backup  move autoexec.bat \backup  cd backup  copy \windows\system.ini  copy \windows\win.ini  </pre>
Windows 95 non-upgrade (if your computer has never used any operating system other than Windows 95)	<pre> cd backup  copy \windows\system.ini  copy \windows\win.ini  </pre>

4. Verify that these files are in the \backup directory by typing:


```
dir 
```


Copy Installation Version of Config.sys and Autoexec.bat Files

Now you need to copy the CONFIG.SYS and AUTOEXEC.BAT files from the CardWare 2.0 disk to your hard disk. The following procedure assumes that the floppy disk drive is designated by the letter "A." If your floppy drive designation differs, use the appropriate drive letter for your system.

1. Insert the CardWare 2.0 disk into your floppy drive.

2. From your hard disk's root prompt, type:

```
copy a:\config\win95\config.sys 
```

```
copy a:\config\win95\autoexec.bat 
```

3. Verify that these files are in the root directory by typing: `dir` 

4. Remove the CardWare 2.0 disk from your floppy drive and exit DOS.

After completing the backup and copy procedures, reboot your computer. To accomplish this:

1. Click Start
2. Click Shut Down



3. Select the “Shut down the computer?” radio button (if it is not already selected) then click the Yes button.



4. Turn power off, then on again.

5. Start up Windows 95.

CardWare Software Installation

To install CardWare software 2.0 in Windows 95, complete the following procedure.

1. Start MS-DOS by clicking:
 - a. Start
 - b. Programs
 - c. MS-DOS Prompt




2. Insert the CardWare 2.0 disk into your floppy drive.
3. From your hard disk's prompt, type:

```
cd\ 
```

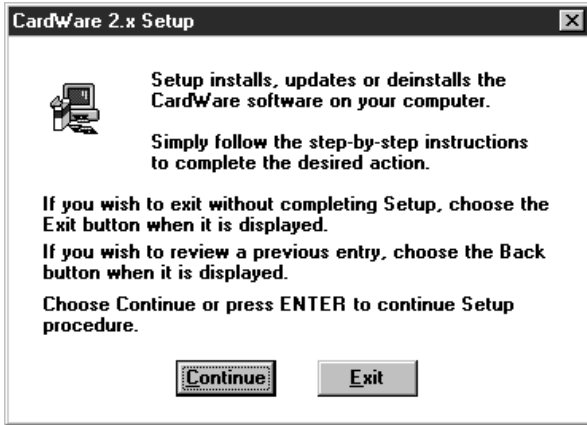
4. To start installation, type:

```
a: 
```

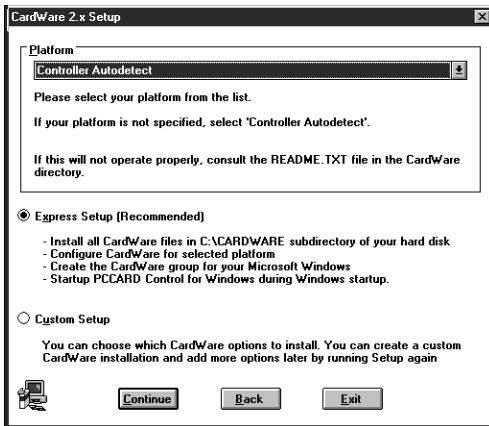
```
cd win 
```

```
setup 
```

After typing the lines in step four, you see:



5. From the CardWare 2.0 setup window, click the Continue button.
You see:

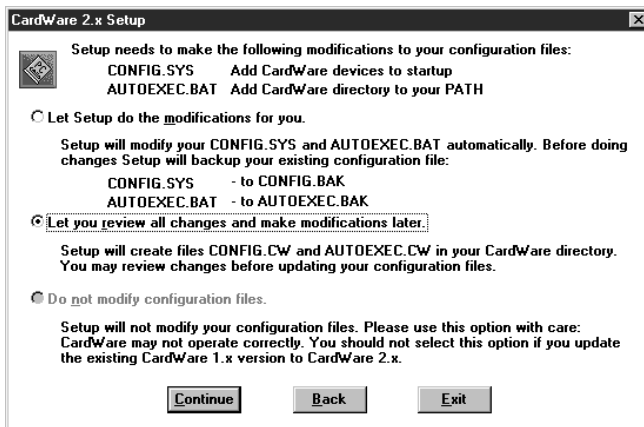


We recommend that you use the Controller Autodetect; however, if you choose an item from the list, your selection must be an **exact** match to your platform.

In addition, we highly recommend that you choose the Express Setup rather than the Custom Setup.

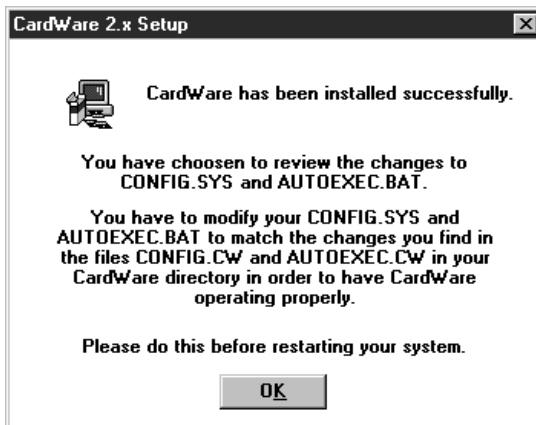
6. Select the Controller Autodetect and click on the Express Setup radio button – then click Continue.

You see:



7. Click on the “Let you review all changes and make modifications later” radio button then click Continue.

After CardWare is finished installing the files, you see:



8. Click the OK button.
9. Refer to chapter 4 of the PCMK Communication Card User Manual and follow the configuration-file modification procedures.

MS-DOS 6.0, Windows 3.1, Windows 3.11, and Windows 95 are trademarks of Microsoft
All other brand and product names are trademarks of their respective companies.



Allen-Bradley, a Rockwell Automation Business, has been helping its customers improve productivity and quality for more than 90 years. We design, manufacture and support a broad range of automation products worldwide. They include logic processors, power and motion control devices, operator interfaces, sensors and a variety of software. Rockwell is one of the world's leading technology companies.

Worldwide representation. _____



Argentina • Australia • Austria • Bahrain • Belgium • Brazil • Bulgaria • Canada • Chile • China, PRC • Colombia • Costa Rica • Croatia • Cyprus • Czech Republic • Denmark • Ecuador • Egypt • El Salvador • Finland • France • Germany • Greece • Guatemala • Honduras • Hong Kong • Hungary • Iceland • India • Indonesia • Ireland • Israel • Italy • Jamaica • Japan • Jordan • Korea • Kuwait • Lebanon • Malaysia • Mexico • Netherlands • New Zealand • Norway • Pakistan • Peru • Philippines • Poland • Portugal • Puerto Rico • Qatar • Romania • Russia, CIS • Saudi Arabia • Singapore • Slovakia • Slovenia • South