



# 1784-KTx Communication Interface Card

(Catalog Numbers 1784-KTX, -KTXD, -KTS)

## Use These Release Notes

Use these release notes with publication 1784-6.5.22, the KTx Communication Interface Card User Manual, published in December 1994.

We use revision bars to call your attention to new and revised information. A revision bar appears as a thick black line on the outside edge of the page as indicated here.

## New DH+™ Specification - Link Baud Rate

Allen-Bradley has added 230k baud rate enhancements to the DH+™ binary.

Note this update to *link baud rate* in the DH+ memory map:

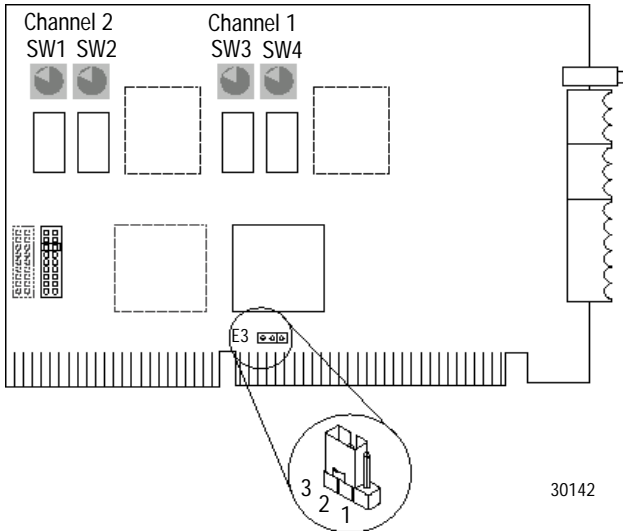
:0007h	Link Baud Rate	INI	FCh = 57600 FEh = 230400	R.....W	Host writes a valid value (KTx baud rate) to byte :00007h. KTx reads at start-up.
--------	----------------	-----	-----------------------------	---------	---

**Important:** Check the product documentation for your RSI communication software to see if the product supports 230k baud rate.

## E3 Jumper Sets Operating Mode

The E3 jumper sets the card to 8- or 16-bit mode.

**Important:** You must place the card in a 16-slot connector regardless of the chosen mode of operation. Eight-bit mode is included only as a fall-back in case of system issues with 16-bit operation; you should run the card in 16-bit mode.



To set this mode:	Jumper these pins:
16-bit*	pins 2 and 3, the two left-most pins
8-bit	pins 1 and 2, the two right-most pins

\* Shipped from the factory in default 16-bit mode

## If You Ordered a 1784-KTS Interface Card

The contents of your order will differ slightly from what is shown on page P-1 of the user manual. 1784-KTS customers **do not** receive the utility disk.

With the 1784-KTS package, you should receive:

- one 1784-KTS communication interface card
- one 1784-KTx Communication Interface Card User Manual, publication 1784-6.5.22

If you are missing either of these pieces, contact your Allen-Bradley sales representative.



# AB Spares

## Rockwell Software Supports KTx Cards

For information on which Rockwell Software products support the KTx card, call Rockwell Software Customer Support at (216) 646-7800.

## Using the KTx Card with 6200 Series Software

You can use the KTx card with Allen-Bradley PLC-2™, PLC-3™, PLC-5™, and PLC-5/250 programmable controllers using 6200 software.

### KTx Card and 6200 Software for PLC-5 and PLC-5/250 Processors

Current versions of Allen-Bradley 6200 software for PLC-5 and PLC-5/250 programmable controllers have built-in support for the KTx card. If your version does not support the KTx card, you must upgrade to the latest version of 6200 software before attempting to connect.

### KTx Card and 6200 Software for PLC-2 Direct-connect and PLC-3 Direct-connect

**Important:** You can use only the 1784-KTX card for PLC-2 and PLC-3 direct-connect. The 1784-KTS and 1784-KTXD **do not** support direct connection to a PLC-2 or PLC-3 programmable controller.

To use the KTX card for direct-connection operation to a PLC-2 or PLC-3 programmable controller, follow these steps:

**Important:** The screen prints presented here may not contain the same part and release number as your KTx Utility software.

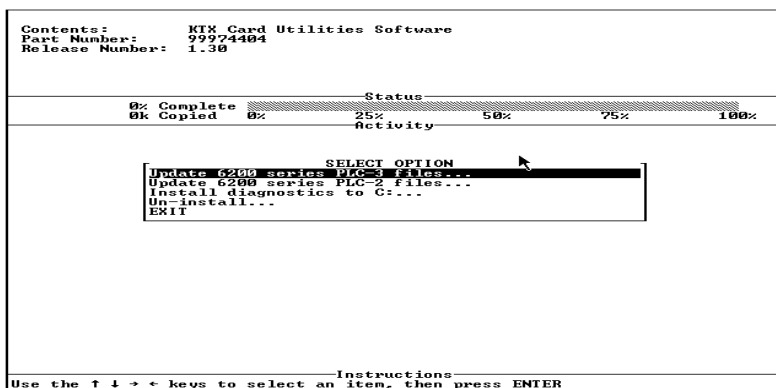
1. Set the memory address on the card to one of the following settings:

- CB00:      • D300:      • DB00:
- CF00:      • D700:      • DF00:

See chapter 2 of the user manual for additional information

2. Install the card in the computer by following the instructions on page 3-4 of the user manual.
3. Run the installation program on the KTx Utility Disk, which came in the box with your KTx card.
  - a. Insert the utility disk in drive A.
  - b. Type:
    - a:
  - c. Type:
 

```
install c
```
4. Select the 'update' routine specific to your programmable controller.
  - Update 6200 series PLC 3 files . . .
  - Update 6200 series PCL 2 files . . .







**Important:** In some instances, the status bar does not reach 100% even though all of the appropriate files have been copied.

- For a PLC-2 programmable controller, select:

Update target drive PLC 2 files with 1784-KTX files

Contents: KTX Card Utilities Software	
Part Number: 99974404	
Release Number: 1.30	
Status	
100% Complete	
8k Copied	0% 25% 50% 75% 100%
Activity	
Updating PLC-3 Programming Software with 1784-KTX files	
Copy KTXBCL.BIN	to C:\IPDS\ATTACH\PLC3\KLBCL.BIN
Copy KTXST0.BIN	to C:\IPDS\ATTACH\PLC3\KLST0.BIN
Copy KTXST1.BIN	to C:\IPDS\ATTACH\PLC3\KLST1.BIN
Copy KTXST2.	to C:\IPDS\ATTACH\PLC3\KLST2.BIN
SELECT OPTION	
Update target drive PLC-2 files with 1784-KTX files	
Update target drive PLC-2 files with 1784-KI files	
Update target drive PLC-2 files with 1784-PCMK files	
EXIT	
Instructions	
Use the f ↓ → + keys to select an item, then press ENTER	

You see:

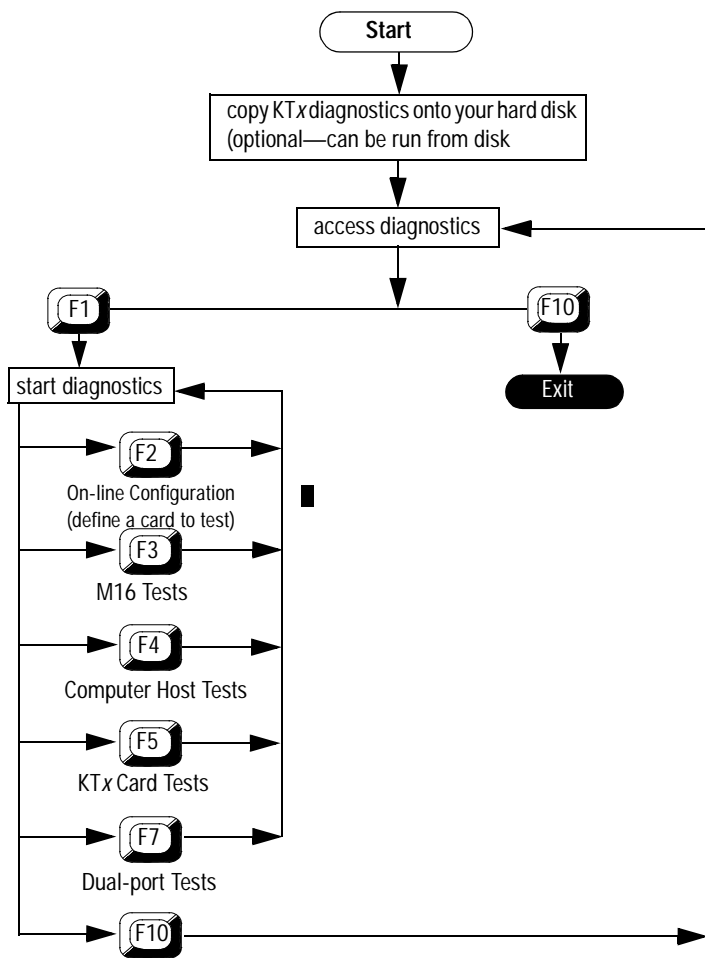
Contents: KTX Card Utilities Software	
Part Number: 99974404	
Release Number: 1.30	
Status	
100% Complete	
5k Copied	0% 25% 50% 75% 100%
Activity	
Updating PLC-2 Programming Software with 1784-KTX files	
Copy KTXNOCL.BIN	to C:\IPDS\ATTACH\PLC2AB\KLNOCCL.BIN
Copy KTXST0.BIN	to C:\IPDS\ATTACH\PLC2AB\KLST0.BIN
Copy KTXST1.BIN	to C:\IPDS\ATTACH\PLC2AB\KLST1.BIN
Copy KTXST2.BIN	to C:\IPDS\ATTACH\PLC2AB\KLST2.BIN
Instructions	
The File Copy portion of the Install is Complete: press ENTER	

6. Exit the installation program.
7. Connect the appropriate cable from the card to the port on the programmable controller:
  - 1784-CP15 for PLC-2
  - 1784-CP16 for PLC-3
8. Start 6200 software for the PCL-2 or PLC-3 programmable controller running on the computer.
9. Go to on-line configuration and set the current device to:
  - “1784-KT (Direct Con.)” for PLC-2 programmable controllers
  - “1784-KT (BCL)” for PLC-3 programmable controllers
10. Set the address on the on-line configuration screen to the following bit patterns, corresponding to the selections on the KTX card:
  - 010011 (CB00:) • 001011 (D300:) • 011011 (DB00:)
  - 110011 (CF00:) • 101011 (D700:) • 111011 (DF00:)
11. Save the configuration.
12. Go on line to confirm that everything is set correctly.

During subsequent programming sessions, these steps do not need to be repeated.



## Troubleshooting the KTx Card



# AB Spares

## Install Diagnostics on Your Hard Drive

Install the diagnostic files by using the installation program on the KTx Utility Disk, which came in the box with your KTx card.

1. Insert the utility disk in drive A.

2. Type:

```
a:
```

3. Type:

```
install c
```

You see:

```

Contents:      KTx Card Utilities Software
Part Number:  99974404
Release Number: 1.30
-----
                Status
0% Complete  0%      25%      50%      75%      100%
0k Copied    0%      Activity
-----
                SELECT OPTION
Update 6200 series PLC-3 files...
Update 6200 series PLC-2 files...
Install diagnostics to C:....
Un-install...
EXIT
-----
Instructions:
Use the f ↓ → ← keys to select an item, then press ENTER

```

4. Select:

```
Install diagnostics to C: . . .
```



DH +, PLC-2, PLC-3, PLC-5 are trademarks of Allen-Bradley Company, Inc.



**Allen-Bradley**



Worldwide representation.

Argentina • Australia • Austria • Bahrain • Belgium • Brazil • Bulgaria • Canada • Chile • China, PRC • Colombia • Costa Rica • Croatia • Cyprus • Czech Republic • Denmark • Ecuador • Egypt • El Salvador • Finland • France • Germany • Greece • Guatemala • Honduras • Hong Kong • Hungary • Iceland • India • Indonesia • Ireland • Israel • Italy • Jamaica • Japan • Jordan • Korea • Kuwait • Lebanon • Malaysia • Mexico • Netherlands • New Zealand • Norway • Pakistan • Peru • Philippines • Poland • Portugal • Puerto Rico • Qatar • Romania • Russia-CIS • Saudi Arabia • Singapore • Slovakia • Slovenia • South Africa, Republic • Spain • Sweden • Switzerland • Taiwan • Thailand • Turkey • United Arab Emirates • United Kingdom • United States • Uruguay • Venezuela • Yugoslavia

Allen-Bradley Headquarters, 1201 South Second Street, Milwaukee, WI 53204 USA,  
Tel: (1) 414 382-2000 Fax: (1) 414 382-4444