



DeviceNet Communication Card

Catalog Number 1784-PCD

Use These Release Notes

These release notes contain information about the 1784-PCD card (Series A, B, and C) and version 4.03 of the driver.

Use these notes along with your DeviceNet Communication Card Installation Instructions, publication 1784-IN029.

To install or update the driver in Windows XP, follow the instructions in this release note. To install or update the driver in other operating systems, refer to publication 1784-IN029.

Topic	Page
Install the 1784-PCD Driver in Windows XP for the First Time	2
Update the 1784-PCD Driver in Windows XP	4
Enhancements for Version 4.03	7
Anomaly Corrected in Version 4.03	7
Enhancements for Version 4.02	7
Connecting to Multiple Networks - Do Not Rely on Autobaud	8

Spare Allen-Bradley

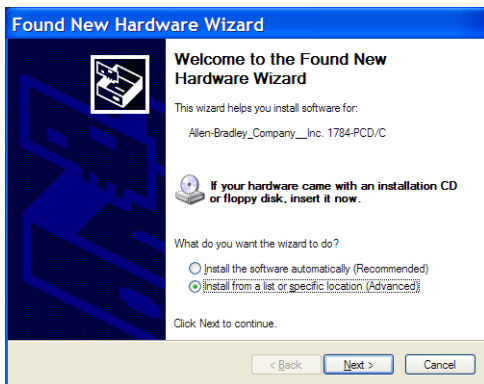
Install the 1784-PCD Driver in Windows XP for the First Time

IMPORTANT

Use this procedure **only** if this is the first time you are installing the 1784-PCD driver on this computer. Otherwise, use the Update the 1784-PCD Driver in Windows XP procedure on page 4.

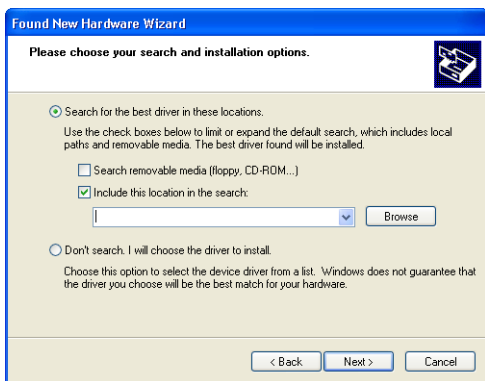
1. Insert your 1784-PCD card into your computer.

You see the Found New Hardware Wizard.



2. Click on the **Install from a list or specific location (Advanced)** radio button.
3. Click **Next**.

4. Click the **Search for the best driver in these locations** radio button.



5. Select the **Include this location in the search** checkbox.

if	then
you are installing from floppy disk	insert the 1784-PCD Installation Windows 95/98/2000/Me 32-bit Setup Disk into the computer's floppy disk drive
you are installing from a compressed file	download from http://support.rockwellautomation.com and unzip the files into a temporary directory

6. Click **Browse** and browse to the folder that contains the installation files.
7. Click **OK**.
8. Click **Next**.
9. Follow the on-screen instructions for installing the 1784-PCD driver.

Update the 1784-PCD Driver in Windows XP

IMPORTANT

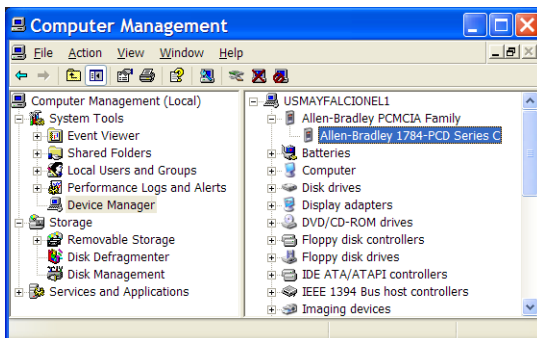
Use this procedure **only** if you have previously installed the 1784-PCD driver on this computer. If not, use the Install the 1784-PCD Driver in Windows XP for the First Time procedure on page 2.

1. Select **Start**.
2. Right-click on **My Computer**.
3. Select **Manage**.

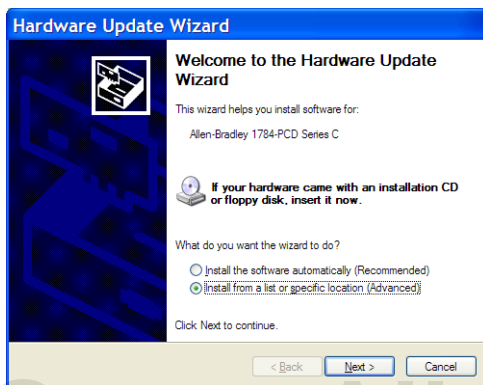


4. On the Computer Management window that appears, select **Device Manager**.

- Click on **Allen-Bradley PCMCIA Family** to expand the list.

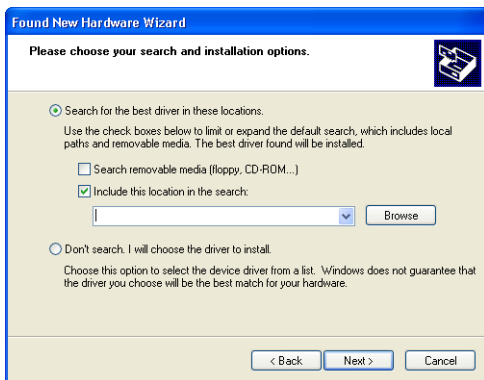


- Right-click on the **Allen-Bradley 1784-PCD Series C** that corresponds to the 1784-PCD card you are updating and select **Properties**.
- Click on the **Driver** tab, then click **Update Driver**. You see the Hardware Update Wizard.



- Select the **Install from a list or specific location (Advanced)** radio button.

9. Click **Next**.
10. Click the **Search for the best driver in these locations** radio button.



11. Select the **Include this location in the search** checkbox.

if	then
you are installing from floppy disk	insert the 1784-PCD Installation Windows 95/98/2000/Me 32-bit Setup Disk into the computer's floppy disk drive
you are installing from a compressed file	download from http://support.rockwellautomation.com and unzip the files into a temporary directory

12. Click **Browse** and browse to the folder that contains the installation files.
13. Click **OK**.
14. Click **Next**.
15. Follow the on-screen instructions for installing the 1784-PCD driver.

Enhancements for Version 4.03

Version 4.03 of the driver now supports 1784-PCD Series A, B, and C cards on Windows XP. Version 4.02 of the driver did not support Series A cards on Windows XP.

Anomaly Corrected in Version 4.03

Version 4.03 of the driver corrects a memory allocation anomaly that could cause Windows XP to 'blue screen'.

Enhancements for Version 4.02

- Windows XP is now supported for Series B and later 1784-PCD cards. Series A 1784-PCD cards cannot be used on Windows XP. You must use a series B or later 1784-PCD card if your PC is running Windows XP. Also note that Series A 1784-PCD cards cannot be FLASH upgraded.
- The 1784-PCD card will now only Auto-address when the driver is configured and Auto-address is selected. Older versions of the driver would allow the card to Auto-address when power was disconnected and then reconnected to the network.
- Counters have been added to the diagnostic window.
- The uninstall program, PcdUpDt.exe, was fixed so that it will run on Windows 95 version B. Earlier versions of PcdUpDt.exe worked on Windows 95, but not on version B.
- The PCD_Test program was changed so that once the 1784-PCD cable test completes, you are prompted as to whether you would like to run it again.

Spare Allen-Brad

Connecting to Multiple Networks - Do Not Rely on Autobaud

Use caution when using the Autobaud feature on multiple DeviceNet networks that are operating at different baud rates. When a 1784-PCD card is connected to a network, you cannot disconnect from that network and reconnect to another DeviceNet network that is using a different baud rate. The card will not automatically use the new network's baud rate. The driver must be reconfigured when you switch to a DeviceNet network operating at a different baud rate.

Whether or not Autobaud is in use, if messages are sent on the new network at an incorrect baud rate, devices on that network could enter a bus-off state. Refer to the DeviceNet Specification. Visit the Open DeviceNet Vendor Association (ODVA) website at www.odva.org to purchase the specification. A device can recover from a bus-off condition by being reset or shut down and restarted.

To properly switch between networks of different baud rates, reconfigure the driver.

If you are using RSLinx:

1. Select **Communications** ⇒ **Configure** ⇒ **Delete**.
2. Select **Communications** ⇒ **Configure** ⇒ **Add New**.

IMPORTANT

Autobaud will not work if there is not sufficient traffic on the network.

RSLinx is a trademark of Rockwell Automation.

DeviceNet is a trademark of Open Device Vendors Association (ODVA).

Windows 95, Windows 2000, and Windows XP are trademarks of Microsoft Corporation.

www.rockwellautomation.com

Corporate Headquarters

Rockwell Automation, 777 East Wisconsin Avenue, Suite 1400, Milwaukee, WI 53202-5302 USA, Tel: (1) 414.212.5200, Fax: (1) 414.212.5201

Headquarters for Allen-Bradley Products, Rockwell Software Products and Global Manufacturing Solutions

Americas: Rockwell Automation, 1201 South Second Street, Milwaukee, WI 53204-2496 USA, Tel: (1) 414.382.2000, Fax: (1) 414.382.4444

Europe: Rockwell Automation SA/NV, Vorstlaan/Boulevard du Souverain 36-BP 3A/B, 1170 Brussels, Belgium, Tel: (32) 2 663 0600, Fax: (32) 2 663 0600

Asia Pacific: Rockwell Automation, 27/F Citicorp Centre, 18 Whitfield Road, Causeway Bay, Hong Kong, Tel: (852) 2887 4788, Fax: (852) 2508 1846

Headquarters for Dodge and Reliance Electric Products

Americas: Rockwell Automation, 6040 Ponders Court, Greenville, SC 29615-4617 USA, Tel: (1) 864.297.4800, Fax: (1) 864.281.2433

Europe: Rockwell Automation, Brühlstraße 22, D-74834 Elztal-Dallau, Germany, Tel: (49) 6261 9410, Fax: (49) 6261 17741

Asia Pacific: Rockwell Automation, 55 Newton Road, #11-01/02 Revenue House, Singapore 307987, Tel: (65) 351 6723, Fax: (65) 355 1733

Publication 1784-RN531C-EN-P - October 2004

PN 957928-91

Supersedes Publication 1784-RN531B-EN-P - September 2002 Copyright © 2004 Rockwell Automation. All rights reserved. Printed in the U.S.A.