



ATTENTION

Read this document before installing the enclosed DeviceNetManager™ software, version 3.001, to determine your scanner's firmware compatibility with the software.

About DeviceNetManager Software Compatibility

Due to an anomaly with the Allen-Bradley DeviceNet™ scanners, DeviceNetManager software may be unable to communicate with your 1771-SDN scanner, 1747-SDN scanner, or 1770-KFD RS-232 interface module without an update.

Important: If you do not perform the update detailed below, your scanner(s) and RS-232 interface module may also be unable to communicate with other software applications.

Your scanner(s) and RS-232 interface module must be one of the following versions to be compatible with DeviceNetManager software, version 3.001 or later:

- 1771-SDN scanner must be version 3.002 or later
- 1747-SDN scanner must be version 2.004 or later
- 1770-KFD interface module must be version 1.004 or later

Important: If your scanner(s) or RS-232 interface module is an earlier version than those listed above, you **MUST** update your device(s) with the enclosed Flash NVS Update software. *Follow the directions in Appendix A of DeviceNetManager Software User Manual, publication 1787-6.5.3.*

If you are using DeviceNetManager 2.0 or later, you may still want to update your 1747 scanner to version 3.001 to receive additional functionality and performance enhancements that are provided by the update.

Determining Node and Revision Number(s)

You need to perform the following steps using your current version of DeviceNetManager software to determine if you have a 1770-KFD RS-232 interface module and the node number and revision number of your 1771-SDN and/or 1747-SDN scanners.

Important: Write down the node number(s) and revision number(s) before attempting the Flash NVS Update discussed in Appendix A of the DeviceNetManager Software User Manual, publication 1787-6.5.3.



ATTENTION: Save your module configuration and scanlist configuration before performing an NVS update.

Finding the 1770-KFD RS-232 Interface Module on the Network

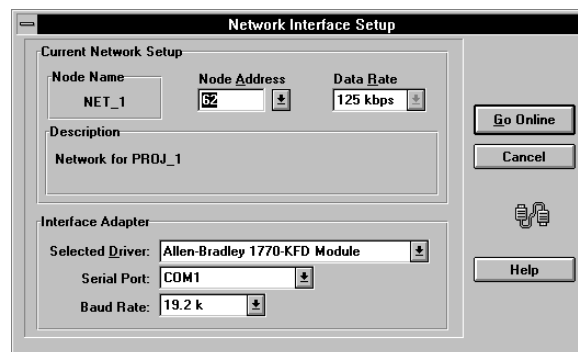
You will need to update your 1770-KFD RS-232 interface module following the directions in Appendix A of the DeviceNetManager Software User Manual, publication 1787-6.5.3, regardless of the revision number.

The 1770-KFD RS-232 interface module must be updated locally across the RS-232 serial connection. Follow these directions to determine if you have a 1770-KFD RS-232 interface module.

1. From the main screen, choose **Setup Online Connection** from the Utilities menu.



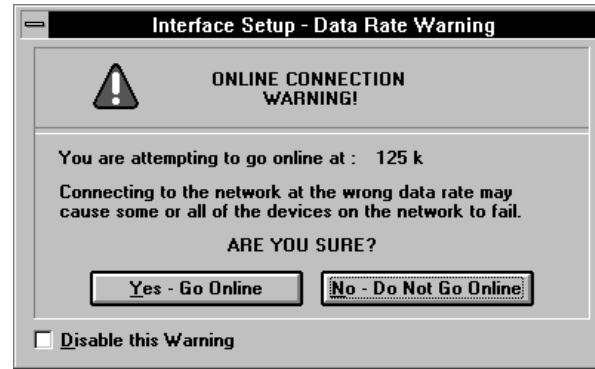
You see this screen.





2.	Is the information correct?	Then
	Yes	Choose <input type="button" value="Go Online"/>
	No	a. Correct the information. b. Choose <input type="button" value="Go Online"/>

Allen-Bradley Replacements

You see this warning screen.



ATTENTION: Make sure that all devices are set to the proper data rate. Attempting to go online at the wrong data rate may cause some or all of the devices on the network to fail.

Do you still want to go online?	Then
Yes	Choose 
No	a. Choose 

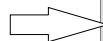
4. From the *Who* menu, choose **Network Who**.

Who



You see a screen similar to this one.

The 1770-KFD RS-232 interface module is displayed as Allen-Bradley DeviceNetManager software in Network Who.



Node	Vendor	Device Type	Product Name
00:	Allen-Bradley Company	Communication Adapter	1771-SDN Scanner Module
02:	Allen-Bradley Company	Communication Adapter	1794-ADN Flex I/O
10:	Allen-Bradley Company	Generic	2705T
26:	Allen-Bradley Company	Photoelectric Sensor	Series 9000 - Diffuse
27:	Allen-Bradley Company	Photoelectric Sensor	Series 9000 - Diffuse
62:	Allen-Bradley Company	Software	DeviceNet Manager


Devices Identified: 6

Buttons: Close, Help, Device Details..., Config Device..., Stop, Rescan

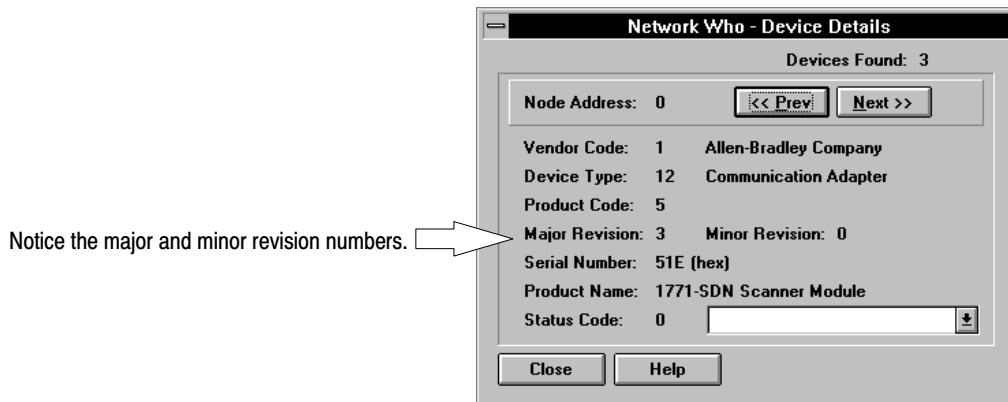
Important: Write down the RS-232 interface module's node number.

Determining Scanner Node and Revision Number(s)

You will need to know the node and revision number(s) of each scanner when performing the Flash NVS Update. Follow these directions to determine the node and revision number(s).

1. Click once on each scanner in the Network Who list.
2. Choose 

You see a screen similar to this one.



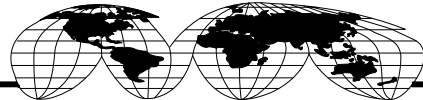
Your scanners' firmware must be the following revision levels to be compatible with DeviceNetManager software, version 3.001. If your scanners do not meet these revision levels, refer to Appendix A of the DeviceNetManager Software User Manual, publication 1787-6.5.3, to update your scanners.

- 1771-SDN Major Revision = 3 (or later)
Minor Revision = 2 (or later)
- 1747-SDN Major Revision = 2 (or later)
Minor Revision = 4 (or later)

DeviceNetManager is a trademark of Allen-Bradley Company, Inc.
 DeviceNet is a trademark of Open DeviceNet Vendor Association (O.D.V.A.).



Allen-Bradley, a Rockwell Automation Business, has been helping its customers improve productivity and quality for more than 90 years. We design, manufacture and support a broad range of automation products worldwide. They include logic processors, power and motion control devices, operator interfaces, sensors and a variety of software. Rockwell is one of the world's leading technology companies.



Worldwide representation.

Argentina • Australia • Austria • Bahrain • Belgium • Brazil • Bulgaria • Canada • Chile • China, PRC • Colombia • Costa Rica • Croatia • Cyprus • Czech Republic • Denmark • Ecuador • Egypt • El Salvador • Finland • France • Germany • Greece • Guatemala • Honduras • Hong Kong • Hungary • Iceland • India • Indonesia • Ireland • Israel • Italy • Jamaica • Japan • Jordan • Korea • Kuwait • Lebanon • Malaysia • Mexico • Netherlands • New Zealand • Norway • Pakistan • Peru • Philippines • Poland • Portugal • Puerto Rico • Qatar • Romania • Russia-CIS • Saudi Arabia • Singapore • Slovakia • Slovenia • South Africa, Republic • Spain • Sweden • Switzerland • Taiwan • Thailand • Turkey • United Arab Emirates • United Kingdom • United States • Uruguay • Venezuela • Yugoslavia

Allen-Bradley Headquarters, 1201 South Second Street, Milwaukee, WI 53204 USA, Tel: (1) 414 382-2000 Fax: (1) 414 382-4444