



1788-FFCT Foundation Fieldbus Configuration Tool Software

Follow these instructions before you install this software.

Before inserting the software CD included in this release, you are required to uninstall all previous versions of software. If you don't uninstall previous versions, the operation of the new release may not work as designed.

Uninstall Previous Versions

To uninstall a previous version, do the following:

1. Backup your data.

The uninstall removes all program files and leaves a directory structure and any data such as configuration files or DD files you have created. Even though this is true, we recommend that you backup any data you wish to preserve. The following is the directory structure for DD files saved, if you have selected default save location.

- Versions 2.3 and 2.3.5: C:\NIFBUS\Data
2. Go to the Windows Control Panel.
 3. Double click the **Add or Remove Programs** icon.
 4. Find the NI-FBUS Configurat or Software and uninstall it.
 5. Repeat Step 4 for any other versions that might be installed on your computer.
 6. Exit Add/Remove Programs.
 7. Re-start your computer.

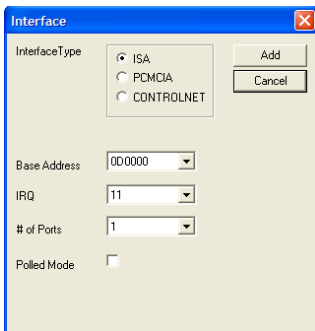
AB Drives

Install the NI-FBUS Configuration Software

Follow these instructions to install the configuration software:

1. Insert the CD-ROM into a drive on your computer.
2. Select **Start => Run**.
3. Browse the CD-ROM drive and select the file Setup.exe.
4. Click **OK**.
5. At the Welcome to the NI-FBUS Configurator (SP) Installation Wizard window, read the recommendations and click **Next**.
6. At the License Agreement window, click the radio button to accept the license agreement and click **Next**.
7. At the User Information window, fill in appropriate information and click **Next**.
8. At the Destination Folder Window, choose the default installation location or click **Browse** to choose an alternative.
9. When finished, click **Next**.
10. At the Select Board Type window, leave item checked at the default and click **Next**.
11. At the Ready to Install the Application window, click **Next** unless you wish to reenter information or exit the wizard.

Please wait while the setup program is installing and updating your system.

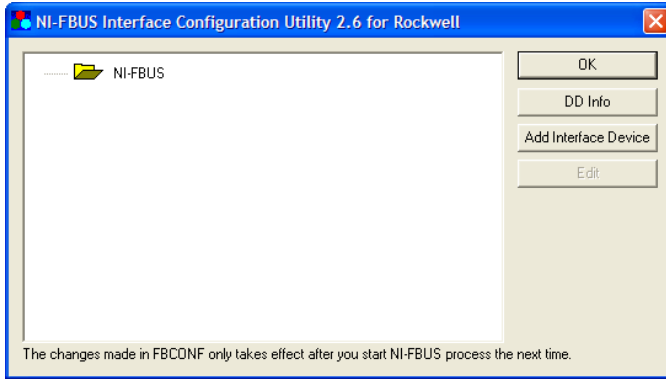


The Interface dialog box appears.

It is not necessary to make any configuration changes at this time, you can do it later from the software.

12. Click **Cancel**.

13. At the NI-FBUS Interface Configuration Utility 2.6 for Rockwell window,



click **OK** to continue the installation.

14. At the successfully installed window, click **Finish**.
15. At the Installer Information window, decide whether to restart your computer now or later. Configuration changes will not take until you reboot your computer.

Additional Information

For additional information on the NI-FBUS Configurator, the 1788-CN2FF Linking Device or general fieldbus solutions information refer to the following Rockwell Automation publications:

- 1788-UM052B, NI-FBUS Configurator User Manual
- 1788-6.5.1, ControlNet to Foundation Fieldbus User Manual
- 1757-UM006A, Fieldbus Solutions for Rockwell Automation's Integrated Architecture User Manual

An Adobe Acrobat (.pdf) version of these Rockwell Automation publications can be downloaded from: <http://www.theautomationbookstore.com>.

For additional information on Foundation Fieldbus, refer to Fieldbus Online, <http://www.fieldbus.org>, a resource for information about fieldbus technology and products.

AB Drives

Rockwell Automation Support

Rockwell Automation provides technical information on the web to assist you in using our products. At <http://support.rockwellautomation.com>, you can find technical manuals, a knowledge base of FAQs, technical and application notes, sample code and links to software service packs, and a MySupport feature that you can customize to make the best use of these tools.

For an additional level of technical phone support for installation, configuration and troubleshooting, we offer TechConnect Support programs. For more information, contact your local distributor or Rockwell Automation representative, or visit <http://support.rockwellautomation.com>.

Installation Assistance

If you experience a problem with a hardware module within the first 24 hours of installation, please review the information that's contained in this manual. You can also contact a special Customer Support number for initial help in getting your module up and running:

United States	1.440.646.3223 Monday – Friday, 8am – 5pm EST
Outside United States	Please contact your local Rockwell Automation representative for any technical support issues.

New Product Satisfaction Return

Rockwell tests all of our products to ensure that they are fully operational when shipped from the manufacturing facility. However, if your product is not functioning and needs to be returned:

United States	Contact your distributor. You must provide a Customer Support case number (see phone number above to obtain one) to your distributor in order to complete the return process.
Outside United States	Please contact your local Rockwell Automation representative for return procedure.

www.rockwellautomation.com

Power, Control and Information Solutions Headquarters

Americas: Rockwell Automation, 1201 South Second Street, Milwaukee, WI 53204-2496 USA, Tel: (1) 414.382.2000, Fax: (1) 414.382.4444

Europe/Middle East/Africa: Rockwell Automation, Vorstlaan/Boulevard du Souverain 36, 1170 Brussels, Belgium, Tel: (32) 2 663 0600, Fax: (32) 2 663 0640

Asia Pacific: Rockwell Automation, Level 14, Core F, Cyberport 3, 100 Cyberport Road, Hong Kong, Tel: (852) 2887 4788, Fax: (852) 2508 1846

Publication 1788-IN057A-EN-P - March 2004

PN 957868-06

Copyright © 2004 Rockwell Automation, Inc. All rights reserved. Printed in the U.S.A.