



1788-CN2FF/1757-CN2FF Firmware Upgrade

This release note outlines the reasons for the new firmware (rev 1.4) and provides procedures for upgrading the CN2FF firmware.

IMPORTANT

After the upgrade, all CN2FF modules will reflect that the firmware is 1788-CN2FF. The 1757 firmware is now obsolete.

Problems Corrected/ Enhancements

Although this upgrade is not required, the reasons below illustrate the importance of completing the upgrade:

- A CN2FF module running with existing firmware (rev 1.1 or 1.2) could lose its configuration data at a power loss or shutdown. If this occurs, the CN2FF stops functioning correctly.
- The new firmware enables the reset switch on the module. A setting of ON resets the unit to factory default settings when/if power is cycled.
- The new firmware enables the ControlNet Interface, via the watch-dog timer, to monitor for stale Fieldbus data when/if the Fieldbus connection to the CN2FF is broken.

Preparation for Upgrade

System Requirements:

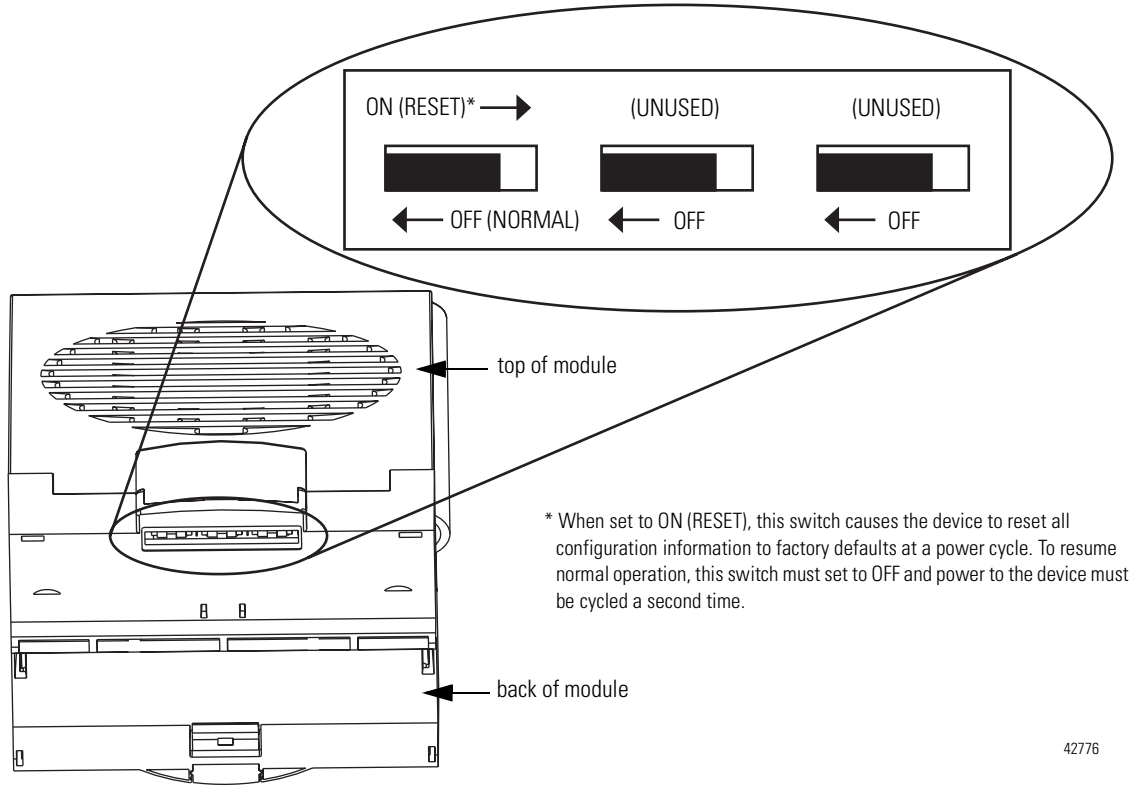
- A 486 processor, or newer compatible processor
- Windows 95, 98, NT, or 2000 operating system
- At least 16 Megabytes of available memory

If your system meets the requirements above, complete the following steps before upgrading:

- 1.** Save and close all running Fieldbus projects, all data stored in the CN2FF will be lost during upgrade.
- 2.** Disconnect the CN2FF from the Fieldbus network to insure that the CN2FF is not controlling an active process.

Allen-Bradley

3. Set the CN2FF's configuration switches to OFF (see figure below) in order to retain the CN2FF configuration data when power is cycled.



4. Close NIFB by double-clicking the NIFB icon (filing cabinet on the lower-right toolbar) and clicking Close.
5. Shutdown all running programs.
6. Verify connectivity between your PC and all CN2FFs using RSLinx.

If there is no connectivity, use a ControlNet Interface card (1784-PCC, 1784-KTCX, or 1784-PCIC) to create a ControlNet connection and RSLinx to configure the ControlNet devices.

7. If you are upgrading from disk, complete only step b, below. If you are upgrading from email, complete all of the following:
 - a. Detach the upgrade files from your email.
 - b. Extract the Rev_1_4_CN2FF_DD.zip file (on Disk 3 or in email) to the folder in which your system's DD files reside.
 - c. Create a new folder on your hard drive and extract the remaining .zip files to this folder.

Upgrade Firmware

After completing the preparations, follow these steps to install ControlFLASH and upgrade your firmware. If you have another version of ControlFLASH, you must install this version to ensure compatibility.

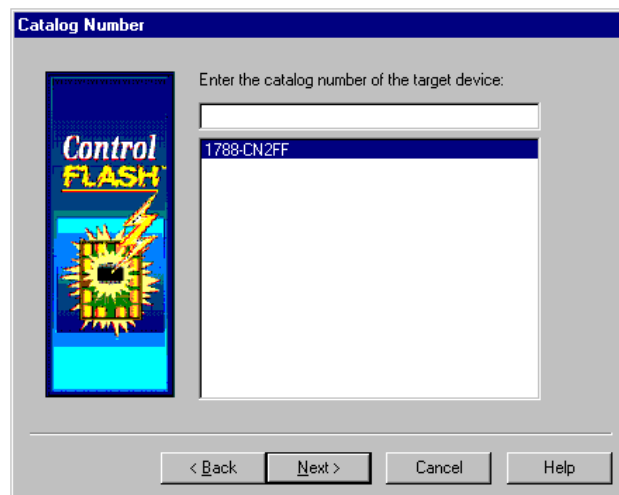
1. Locate the new folder to which you extracted the .zip files or insert and open Disk 1, and double-click the setup.exe file to run the ControlFLASH setup wizard.
2. Follow the setup wizard directions to complete installation.

When installation is complete, the Welcome screen opens.



3. Click Next.

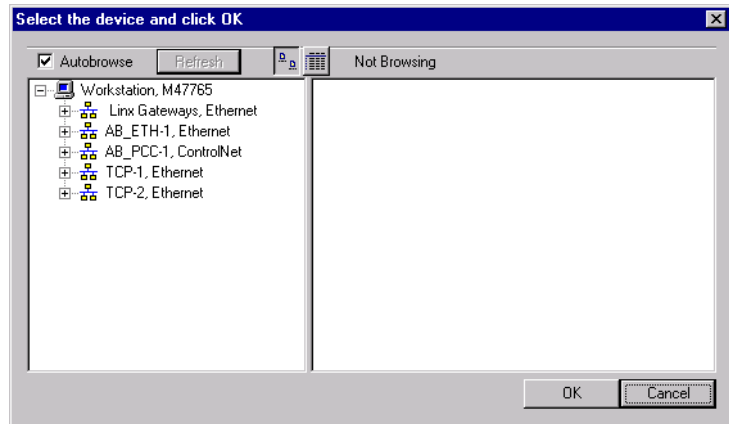
The Catalog Number screen opens.



4. Select the 1788-CN2FF for both the 1788 and 1757 modules and click Next.

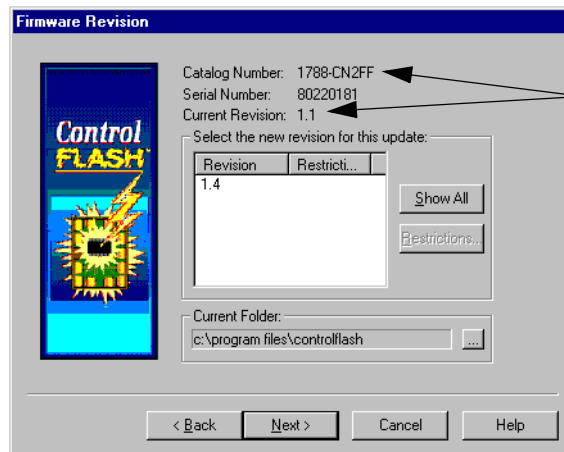
Allen-Bradley

The devices window opens.



5. Navigate to the CN2FF that you want to upgrade, select it and click OK.

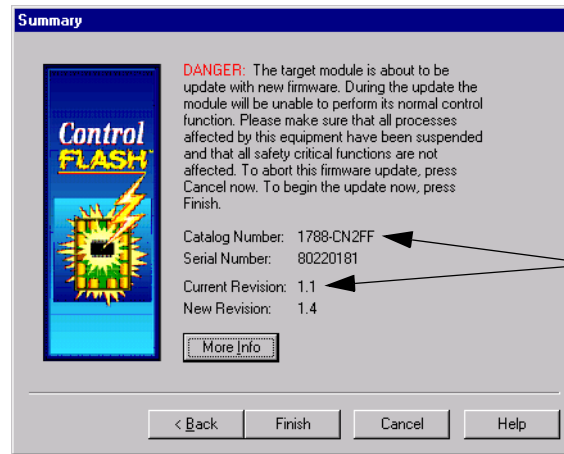
The Firmware Revision window opens.



This screen will reflect 1757-CN2FF and revision 1.2 if that is your current firmware.

6. Select Revision number 1.4 and click Next.

A ControlFLASH Summary window opens.



This screen will reflect 1757-CN2FF and revision 1.2 if that is your current firmware.

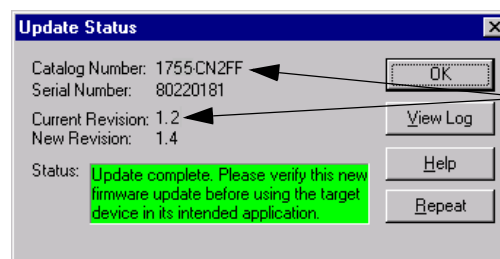
7. Click Finish.

A ControlFLASH prompt opens to make sure you want to begin.



8. Click Yes.

After the firmware update is complete, a status window opens.



This screen will reflect 1788-CN2FF and revision 1.1 if that is your current firmware.

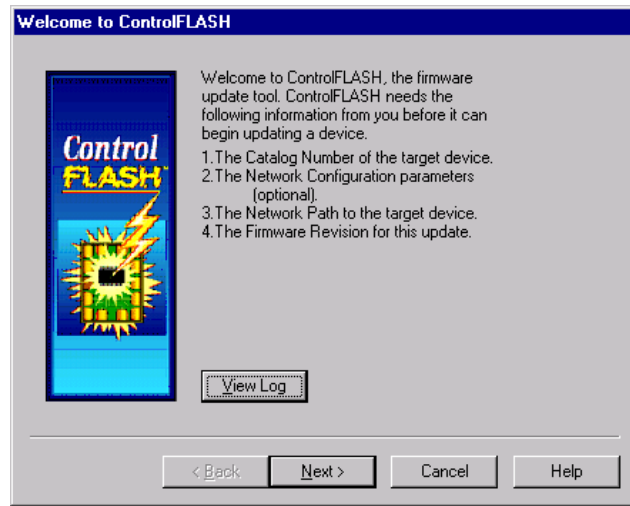
IMPORTANT

If you have updated the 1.2 revision, the Status box is green if the update is successful.

If you have updated the 1.1 revision, the Status box is red. The power must be cycled to manually reset the CN2FF and complete a successful update.

9. Click OK.

The Welcome screen opens again.



10. Repeat steps 3 through 9 to upgrade other CN2FF modules.

After all CN2FF modules have been upgraded, click Cancel to close ControlFlash.

11. Use the NI-FBUS Interface Configuration Utility to load the new DD. Refer to page 3-5 of the H1 Linking Device User Manual, publication 1788-6.5.1, for more information.
12. Reload the Fieldbus Configuration.

www.rockwellautomation.com

Corporate Headquarters

Rockwell Automation, 777 East Wisconsin Avenue, Suite 1400, Milwaukee, WI, 53202-5302 USA, Tel: (1) 414.212.5200, Fax: (1) 414.212.5201

Headquarters for Allen-Bradley Products, Rockwell Software Products and Global Manufacturing Solutions

Americas: Rockwell Automation, 1201 South Second Street, Milwaukee, WI 53204-2496 USA, Tel: (1) 414.382.2000, Fax: (1) 414.382.4444

Europe: Rockwell Automation SA/NV, Vorstlaan/Boulevard du Souverain 36-BP 3A/B, 1170 Brussels, Belgium, Tel: (32) 2 663 0600, Fax: (32) 2 663 0640

Asia Pacific: Rockwell Automation, 27/F Citicorp Centre, 18 Whitfield Road, Causeway Bay, Hong Kong, Tel: (852) 2887 4788, Fax: (852) 2508 1846

Headquarters for Dodge and Reliance Electric Products

Americas: Rockwell Automation, 6040 Ponders Court, Greenville, SC 29615-4617 USA, Tel: (1) 864.297.4800, Fax: (1) 864.281.2433

Europe: Rockwell Automation, Brühlstraße 22, D-74834 Elztal-Dallau, Germany, Tel: (49) 6261 9410, Fax: (49) 6261 17741

Asia Pacific: Rockwell Automation, 55 Newton Road, #11-01/02 Revenue House, Singapore 307987, Tel: (65) 351 6723, Fax: (65) 355 1733