



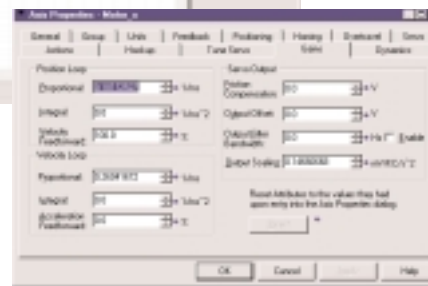
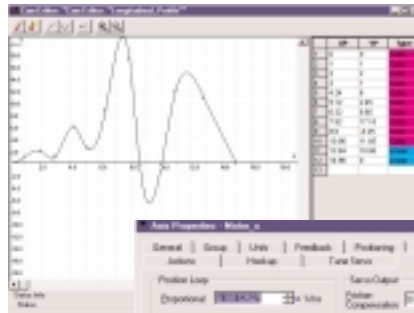
Allen-Bradley

SoftLogix5800

**High Performance,
PC-Based Motion Control**

Product Profile

SoftLogix5860 is a high performance, PC-based control system that integrates sequential and motion control. SoftLogix5860 includes an integrated high performance motion solution that allows the most demanding motion applications to be solved. Using motion has never been simpler. Just use RSLogix™ 5000 to name and configure each motion axis, develop the application program by selecting instructions from an extensive command library that includes 30 advanced motion instructions, and download to the SoftLogix5860 controller. To complete the motion solution, insert the PCI motion cards into the PC and connect the motion drives. SoftLogix5860 provides a motion system that is easier to integrate and provides higher levels of performance than traditional PC-based motion controllers by executing the motion commands and generating motion profiles directly on the native PC processor – an approach called “SoftMotion.” The SoftMotion approach allows all the speed and power of today’s PCs to be directly applied to solve the most demanding applications.



Simple Integration

- RSLogix 5000 provides full support for motion programming, configuration, and commissioning.
 - wizard- and dialog-based axis configuration
 - 30 motion commands
 - RSTrendX™ graphical trending
 - graphical motion profile editor for easy definition of complex motion profiles
 - full online support, including program and configuration edits, motion attribute monitoring.
- auto tuning measures reflected inertia and sets all system gains
 - drive hookup diagnostics
 - verify proper drive interface wiring
 - direct, synchronous, inline execution of motion commands in the ladder application program eliminates the need for complex synchronization logic.



Bringing Together Leading Brands in Industrial Automation

Extensive Motion Support

- 30 motion commands provide a wide range of motion support
 - jogging
 - point-to-point modes
 - position and time camming with linear and spline interpolation
 - high speed registration support
 - auto tuning and hookup diagnostics
- Support for up to 32 axes per SoftLogix 5860 controller instance. Supported axis types are:
 - full servo
 - position only
 - virtual
 - consumed

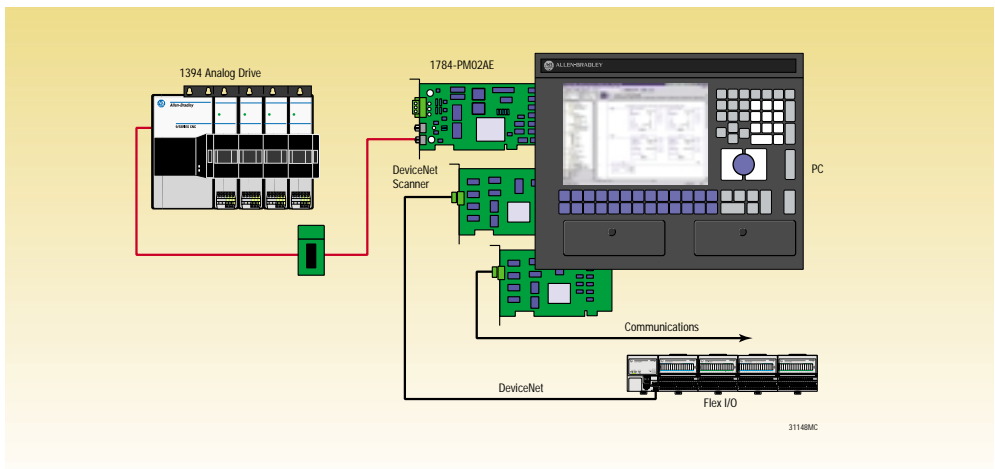
High Performance

- DSP-based, 32 bit PCI motion card
 - 16 bit analog velocity or torque command outputs
 - 4MHz quadrature encoder inputs
 - full-featured position and velocity servo loops with high speed 200 µs updates
- direct, synchronous, inline execution of motion commands in the ladder application program eliminates complex synchronization logic and network delays.

Copyright 2000 Rockwell International Corporation.
 All trademarks and registered trademarks of property of their respective companies.

SoftLogix

| Item | Catalog No. | Description |
|---------------------------|---|--|
| SoftLogix Controller | 1789-L60 1789-L30 1789-L10 | SoftLogix5860 controller with 16-slot virtual chassis SoftLogix5830 controller with 5-slot virtual chassis SoftLogix5810 controller with 2-slot virtual chassis |
| Motion Module | 1784-PM02AE | SoftLogix 2 Axis Motion Module – 2 axes per module, 32 axes per 1789-Lxx controller; nested PI digital position and velocity servo loop, analog, 16bit velocity or torque output; 4MHz incremental AB quadrature encoder input with marker |
| Motion Module Termination | 1784-PM02AE-TP01 1784-PM02AE-TP03 | Motion Termination Panel – 1 meter cable Motion Termination Panel – 3 meter cable |
| Programming Software | 9324-RD300ENE 9324-RDCNTENE 9357-DNETL3 9357-CNETL3 | Standard RSLogix 5000 programming software RSLogix 5000 programming software with RSNetwork™ for ControlNet™ RSNetwork for DeviceNet™ RSNetwork for ControlNet |
| Recommended Platform | Microsoft® Windows NT™ SP5 or greater, or Microsoft Windows 2000™ Pentium II, 300MHz computer or higher 128MB RAM 20 MB Free Disk Space CD ROM Drive (for install) | |
| Pre-sales Publications | Logix-BR001A-EN-P 1789-SG001A-EN-P 1756-CD | Logix brochure gives an overview of the benefits of choosing Logix for control SoftLogix selection guide will help you make the right choices as you design your SoftLogix system Logix promotional CD contains all current promotional and technical documentation for all Logix products |



Reach us now at www.rockwellautomation.com

Wherever you need us, Rockwell Automation brings together leading brands in industrial automation including Allen-Bradley controls, Reliance Electric power transmission products, Dodge mechanical power transmission components, and Rockwell Software. Rockwell Automation's unique, flexible approach to helping customers achieve a competitive advantage is supported by thousands of authorized partners, distributors and system integrators around the world.

Americas Headquarters, 1201 South Second Street, Milwaukee, WI 53204, USA, Tel: (1) 414 382-2000, Fax: (1) 414 382-4444
European Headquarters SA/NV, avenue Herrmann Debroux, 46, 1160 Brussels, Belgium, Tel: (32) 2 663 06 00, Fax: (32) 2 663 06 40
Asia Pacific Headquarters, 27/F Citicorp Centre, 18 Whitfield Road, Causeway Bay, Hong Kong, Tel: (852) 2887 4788, Fax: (852) 2508 1846

