

DTM Library FLEX I/O and FLEX Ex

DTM Version 1.0.10.20

Topic	Page
About This Publication	1
About the DTM Library	1
System Requirements	2
Before installing the software	3
Install the Software	3
Software Change History	7
Rockwell Automation Support	8

About This Publication

This release note tells you what is required in hardware to support DTM software, and how to install DTM software for the 1794 FLEX I/O family and the 1797 FLEX Ex I/O family.

About the DTM Library

The Rockwell Automation DTM Library FLEX Family is a group of Data Type Managers (DTMs) for use with 1794 FLEX I/O and 1797 FLEX Ex HART I/O modules. The library contains the following DTMs:

- FlexRail
- 1797-IE8H/A
- 1797-IE8H/B⁽¹⁾

- 1797-OE8H/A
- 1797-OE8H/B⁽¹⁾
- 1794-IE8H/A
- 1794-IE8H/B
- 1794-OE8H/A
- 1794-OE8H/B
- 1794-IF8IH/A
- 1794-OF8IH/A
- 1794-APBDPV1/A

NOTE: The FlexRail DTM includes the EtherNet/IP or ControlNet adapter. The DTMs allow Field Device Tools (FDT), such as FactoryTalk AssetCentre Process Device Configuration from Rockwell Automation or other third party applications such as Endress+Hauser FieldCare to communicate with Highway Addressable Remote Transducer (HART) devices.

System Requirements

You must have the proper operating system, hard disk space, and computer system resources to run the DTMs.

Operating system

- Windows 2000 with service pack 4, US and European versions.
- Windows XP with service pack 3, US and European versions.
- Windows 2003 Server R2 SP2, US and European versions.
- Microsoft .NET Framework Version 1.1 or 2.0 must be installed on the system.

Hard disk space

- Approximately 25 MBytes hard disk space required during installation.
- Approximately 20 MBytes hard disk space required during operation.

⁽¹⁾ These products may not yet be available at time of print.

System resources

CPU of the computer: Pentium 3, 1000 MHz or equivalent

Working memory (RAM): 512 MByte or higher

Screen resolution: 1280 x 1024 or greater

Before installing the software

Uninstall all previous versions of the Rockwell Automation DTM Library FLEX Family.

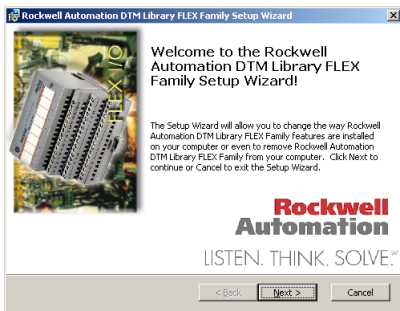
Install the Software

Complete the following tasks to install the Rockwell Automation DTM Library FLEX Family.

1. Install the .NET Framework version 2.0 (if not already installed).
2. Extract the installation package to your local disk. The following structure and files will appear:
 - 0007_1.mst
 - 0009_1.mst
 - Disk1.cab
 - Disk2.cab
 - Disk3.cab
 - Disk4.cab
 - Disk5.cab
 - Disk6.cab
 - Disk7.cab
 - Setup.exe
 - Setup.msi
 - Bootstrap\VBRuntime.msi
 - Bootstrap\Msi\Win9X\instmsi.exe
 - Bootstrap\Msi\WinNT\InstMsi.exe

4 DTM Library FLEX I/O and FLEX Ex

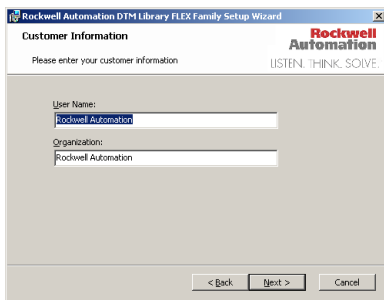
3. Double click Setup.exe to execute the setup wizard.
The setup wizard opens:



4. Click Next to continue the installation.
5. Read and accept the terms of the End User License Agreement in order to continue the installation.

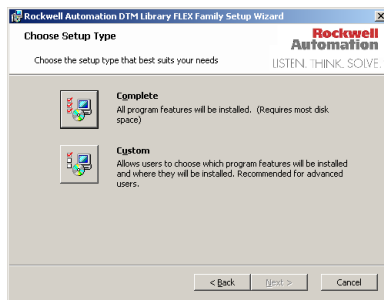


6. Enter your user name and organization and click Next.

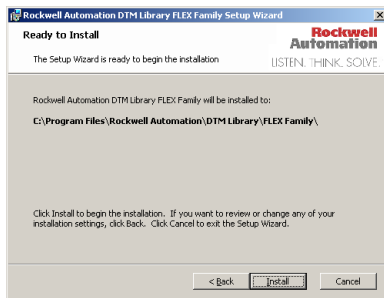


7. Choose your setup type.

The Complete setup is recommended. However, you may choose the Custom setup to install only the parts of the software you select.



The Ready to Install dialog displays the installation directory.



8. Click Install.

If installation is successful, the following screen displays.



IMPORTANT

Many FDT Frame applications, including FactoryTalk AssetCentre Process Device Configuration from Rockwell Automation, require the DTM Library to be updated after the installation of new DTMs. Please consult documentation from your FDT Frame application to determine if this step is necessary and the appropriate method to update the catalog.

Additional Resources

You can view or download publications at <http://literature.rockwellautomation.com>. To order paper copies of technical documentation, contact your local Rockwell Automation distributor or sales representative.

Tech Notes and other resources are available at the Technical Support Knowledgebase, <http://www.rockwellautomation.com/knowledgebase>.

Software Change History

Change History for Rockwell Automation DTM Library FLEX Family

Revision	Description
1.0.10.20	Fixed problem that a HART reply, split up into more than one packet is not reassembled in the IF8H and OF8H DTMs. Updated for HART 6 compatibility.
1.0.9.19	Fixed problem that "Create network" works only once per instantiation with 1794-IF8IH and 1794-OF8IH DTMs. Updated the 179x-IE8H, and 179x-OE8H module DTMs to version 19.
1.0.8.18	Fixed problem when re-connecting after disconnect with HART Device DTM was not possible at 1794-IF8H and 1794-OF8H Module DTMs. Updated the 179x-IE8H and 179x-OE8H module DTMs to version 18.
1.0.7.17	<ul style="list-style-type: none"> • Added support for .NET Framework 2.0. • Added USB driver support. • Added 1794-IE8H/B, 1794-OE8H/B, 1797-IE8H/B, 1797-OE8H/B, 1794-IF8IH/A, 1794-OF8IH/A and 1794-APBDPV1/A DTMs. • Replaced RSLinx, ControlNet and EtherNet/IP Adapter DTMs with FlexRail DTM. • Added RSWho function to set CIP Path. • Added FMDT Group Certification.
0.1.0.19	Initial release.

Rockwell Automation Support

Rockwell Automation provides technical information on the Web to assist you in using its products. At <http://support.rockwellautomation.com>, you can find technical manuals, a knowledge base of FAQs, technical and application notes, sample code and links to software service packs, and a MySupport feature that you can customize to make the best use of these tools.

For an additional level of technical phone support for installation, configuration, and troubleshooting, we offer TechConnect Support programs. For more information, contact your local distributor or Rockwell Automation representative, or visit <http://support.rockwellautomation.com>.

Installation Assistance

If you experience a problem with a hardware module within the first 24 hours of installation, please review the information that's contained in this manual. You can also contact a special Customer Support number for initial help in getting your module up and running.

United States	1.440.646.3434 Monday – Friday, 8am – 5pm EST
Outside United States	Please contact your local Rockwell Automation representative for any technical support issues.

New Product Satisfaction Return

Rockwell tests all of its products to ensure that they are fully operational when shipped from the manufacturing facility. However, if your product is not functioning, it may need to be returned.

United States	Contact your distributor. You must provide a Customer Support case number (see phone number above to obtain one) to your distributor in order to complete the return process.
Outside United States	Please contact your local Rockwell Automation representative for return procedure.

Allen-Bradley, Rockwell Automation, FLEX I/O, FLEX Ex, ControlLogix, RSLogix, FactoryTalk, and TechConnect are trademarks of Rockwell Automation, Inc.

Trademarks not belonging to Rockwell Automation are property of their respective companies.

Rockwell Otomasyon Ticaret A.Ş., Kar Plaza İş Merkezi E Blok Kat:6 34752 İçerenköy, İstanbul, Tel: +90 (216) 5698400

www.rockwellautomation.com

Power, Control and Information Solutions Headquarters

Americas: Rockwell Automation, 1201 South Second Street, Milwaukee, WI 53204-2496 USA, Tel: (1) 414.382.2000, Fax: (1) 414.382.4444
Europe/Middle East/Africa: Rockwell Automation, Vorstlaan/Boulevard du Souverain 36, 1170 Brussels, Belgium, Tel: (32) 2 663 0600, Fax: (32) 2 663 0640
Asia Pacific: Rockwell Automation, Level 14, Core F, Cyberport 3, 100 Cyberport Road, Hong Kong, Tel: (852) 2887 4788, Fax: (852) 2508 1846

Publication 1794-RN068D-EN-E - February 2011

Supersedes Publication 1794-RN068C-EN-E - December 2009

Copyright © 2011 Rockwell Automation, Inc. All rights reserved