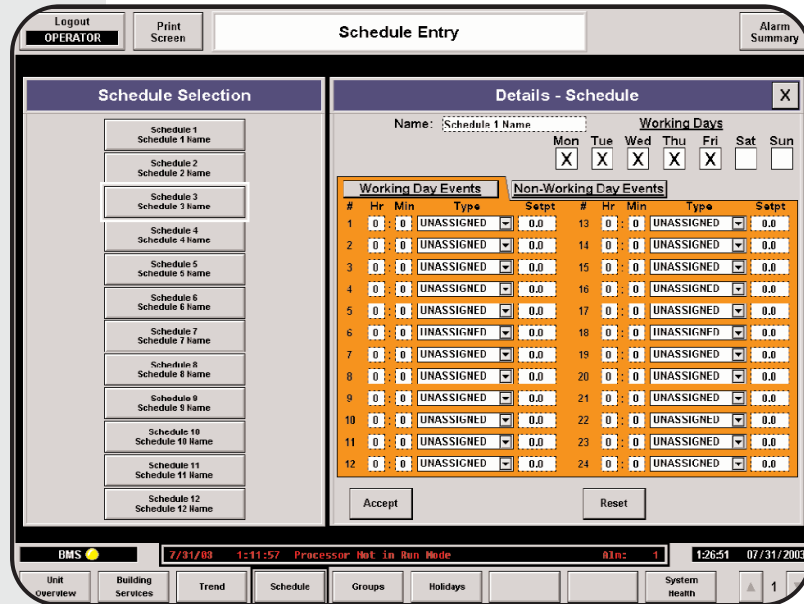


HVAC Scheduler (1803-SCH)

The 1803-SCH1 is a preprogrammed equipment scheduler based on standard off the shelf A-B ControlLogix platform and RSView32. The scheduler is designed to work with many types of equipment such as: HVAC /Air Handlers, Lighting, Chillers, Compressors and Production Equipment.

Ideal for:

- Customers who are familiar with PLC's and RSView32.
- Reliable hardened control applications.
- Gaining leverage on your existing Allen-Bradley, training, employee knowledge, installed PLC's, software and networks.
- The need to network and view equipment operation.
- Maintaining your own system.



PLC Equipment Scheduler

Standardized HMI display screens included with the 1803-SCH1 are:

- Group Management,
- Schedule Entry,
- Holiday Management.

Customized screens are available for example:

- HVAC Overview,
- Building Services,
- Trends,
- Group Management,
- System Health and Alarm Summary.

Basic 1803-SCH1 Functionality:

(12) Schedules each with:

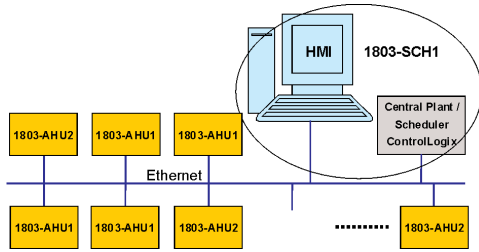
- Assignable working and non-working days.
- Separate event lists for working and non-working days
- Hourly event scheduling

(24) Holidays which are treated as non-working days.

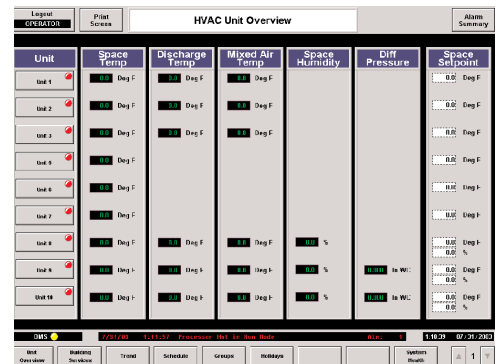
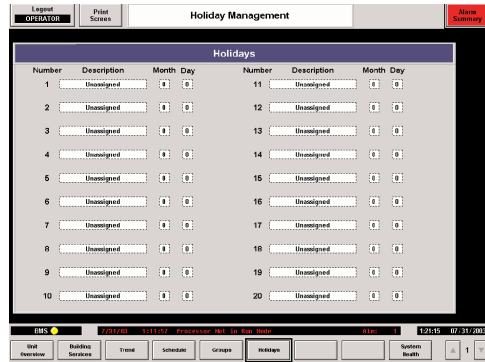
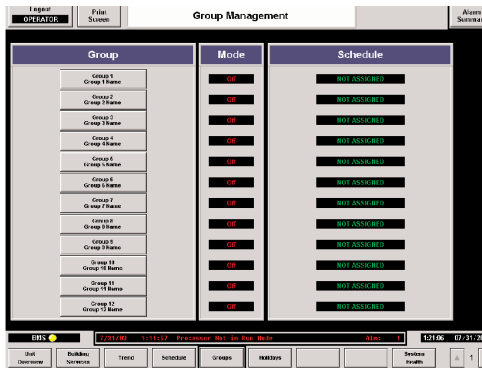
Typical System Architecture

Combining the 1803-AHUX with the 1803-SCH1 scheduler provides a combined highly configurable scheduling capability to the CompactLogix AHU's. The 1803-AHUX and the 1803-SCH1 are the base building blocks for a Facility Management System.

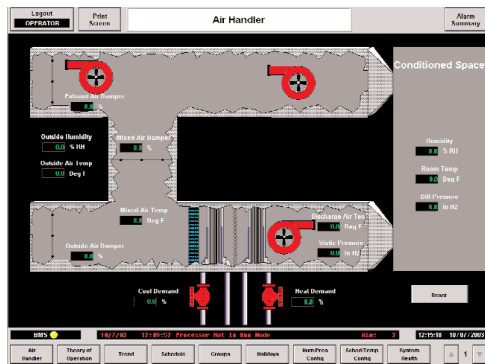
The 1803-SCH1 can be configured to accommodate customized screens of your facility including and plant utilities and air handling units. Contact your Rockwell Automation representative for a quote.



Sample 1803-SCH Display Screens



Sample Optional Display Screen



www.rockwellautomation.com

Corporate Headquarters

Rockwell Automation, 777 East Wisconsin Avenue, Suite 1400, Milwaukee, WI, 53202-5302 USA, Tel: (1) 414.212.5200, Fax: (1) 414.212.5201

Headquarters for Allen-Bradley Products, Rockwell Software Products and Global Manufacturing Solutions

Americas: Rockwell Automation, 1201 South Second Street, Milwaukee, WI 53204-2496 USA, Tel: (1) 414.382.2000, Fax: (1) 414.382.4444

Europe/Middle East/Africa: Rockwell Automation SA/NV, Vorstlaan/Boulevard du Souverain 36, 1170 Brussels, Belgium, Tel: (32) 2 663 0600, Fax: (32) 2 663 0640

Asia Pacific: Rockwell Automation, 27/F Citicorp Centre, 18 Whitfield Road, Causeway Bay, Hong Kong, Tel: (852) 2887 4788, Fax: (852) 2508 1846

Headquarters for Dodge and Reliance Electric Products

Americas: Rockwell Automation, 6040 Ponders Court, Greenville, SC 29615-4617 USA, Tel: (1) 864.297.4800, Fax: (1) 864.281.2433

Europe/Middle East/Africa: Rockwell Automation, Brühlstraße 22, D-74834 Elztal-Dallau, Germany, Tel: (49) 6261 9410, Fax: (49) 6261 17741

Asia Pacific: Rockwell Automation, 55 Newton Road, #11-01/02 Revenue House, Singapore 307987, Tel: (65) 6356-9077, Fax: (65) 6356-9011