

Bulletin 800T

- 18 mm Mounting Hole
- Type 4/13 Watertight/Oiltight
- Small Pilot Lights

TABLE OF CONTENTS

Description	Page	Description	Page
Specifications	10-5	Accessories	
Pilot Lights		Legend Plates	10-308
Standard	10-307	Color Caps	10-308
Push-to-Test	10-307	Guard	10-308
Dual Input	10-307	Replacement Lamps	10-308
		Dimensions	10-309

Small Pilot Lights Type 4/13, Class I, Division 2



18 mm Pilot Light
 Cat. No. 800T-PS16R

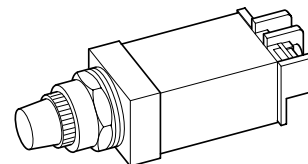


18 mm Push-to-Test Pilot Light
 Cat. No. 800T-PST16R

Type	Lamp	Voltage	Color	Pilot Light	Push-To-Test ①②③
				Cat. No.	Cat. No.
Transformer	Incandescent	120 AC 50/60 Hz	Red	800T-PS16R	800T-PST16R
Full Voltage		24 AC/DC		800T-QS24R	800T-QST24R
Dual Input Diode ④		120 AC		800T-PSD16R	—
		24 AC/DC		800T-PSD24R	—
Dual Input Transformer ④	120 AC 50/60 Hz	800T-PSDT16R	—		
Transformer	LED	120 AC 50/60 Hz ⑤	Red	800T-PSH16R	800T-PSTH16R
Full Voltage		24 AC/DC		800T-QSH24R	800T-QSTH24R
		120 AC		800T-QSH10R	800T-QSTH10R
Full Voltage		120 AC/DC		800T-RS10A	800T-RST10A

Small Pilot Light Type 4/13, Class I, Division 2

800T – **PS** **D** **16** **R**
 a **b** **c** **d** **e**



a		c		d		d (cont'd)	
Power Module Type		Illumination Options		Voltage		Voltage	
Code	Description	Code	Description	Code	Description	Code	Description
PS	Transformer (or Dual Input)	Blank	Incandescent	16	120V AC 50/60 Hz	10	120V AC/DC
QS	Full Voltage	F	Flashing Incandescent ⑥	26	240V AC 50/60 Hz	20	240V AC/DC
RS	Neon ⑦	H	LED ⑧	Full Voltage		Dual Input	
b		Full Voltage		Code	Description	Code	Description
Lamp Test Options		Code	Description	06	6V AC/DC	16	120V AC 50/60 Hz
Code	Description	Blank	Incandescent	12	12V AC/DC	24	24V AC/DC ⑨
Blank	No Test Option	F	Flashing Incandescent ⑥	24	24V AC/DC	e	
D	Dual Input Diode	H	LED ⑧	32	32V AC/DC ⑩	Lens Color	
DT	Dual Input Transformer Relay	Neon		48	48V AC/DC ⑪	Plastic	
T	Push-to-Test	Code	Description	10	120V AC/DC ⑫	Blank	No Lens
		Blank	No Options	13	130V AC/DC ⑬	A	Amber
		Dual Input				B	Blue
		Code	Description			C	Clear
		Blank	Incandescent			G	Green
		H	LED ⑧			R	Red
						W	White

- ① See page 10-30 for Typical Wiring Diagram.
- ② Type 13 only.
- ③ UL/CSA Class I, Division 2 rating not available.
- ④ Neon is only available in amber or clear.
- ⑤ Flashing lamps are only available in 6V full voltage units and all transformer units.

- ⑥ LEDs available in red, green, amber, blue, and white. White LEDs only available in 6V and 24V full voltage and all transformer units. LED color must match lens color, except clear lens supplied with white LED and white lens supplied with amber LED. All LEDs except 120V have an internal shunt resistor for use with solid-state outputs.
- ⑦ LED only.
- ⑧ Dual input diode only.

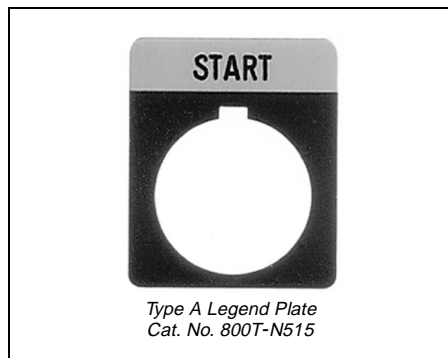
Accessories – Page 10-308
 Legend Plates – Page 10-308

Approximate Dimensions – Page 10-309

Bulletin 800T
18 mm Pilot Lights
Type 4/13, Watertight/Oiltight

Accessories

Legend Plates



Description	Cat.No.
Blank	
Type A	800T-N515
Type B	800T-N516
With Custom Marking ❶	
Type A with Text	800T-N515E
Type B with Text	800T-N516E

❶ Text must be supplied.

Color Caps



Color	Cat. No.
Red	800T-N122R
Green	800T-N122G
Amber	800T-N122A
Blue	800T-N122B
White	800T-N122W
Clear	800T-N122C

Guard



Description	Cat. No.
Guard for Illuminated Push Buttons	800T-N226

Custom Text Guidelines

Legend Type	Number of Lines	Maximum Number of Characters
A	1	9
B	2	13

Replacement Lamps

Lamp	Type	Typical Current	Lamp Voltage	ANSI Number	Cat. No.	
Incandescent 	Full Voltage/All Transformer	150/250 mA	6 AC/DC	755/1866	800T-N65	
	Full Voltage	80 mA	14 AC/DC	756	800T-N141	
	Full Voltage	70 mA	28 AC/DC	757	800T-N157	
	Dual Input Diode	57 mA	24 AC/DC	24MB	800T-N180	
	Flashing	150 mA	6 AC/DC	267	800T-N212	
	Dual Input Diode	22 mA	130 AC/DC	949	800T-N169	
	Dual Input Transformer	150/250 mA	6 AC/DC	755/1866	800T-N65	
Neon 	—	2 mA	120 AC/DC	B2A	609-N9	
Lamp	Type	Typical Current ❷	Lamp Voltage	Leakage Current	Cat. No.	
LED ❸ 	Full Voltage/All Transformer	14 mA/48 mA	6 AC/DC	3 mA	800T-N318x ❹	
	Full Voltage		13 mA/22 mA	12 AC/DC	3 mA	800T-N362x ❹
			13 mA/21 mA	24 AC/DC	3 mA	800T-N319x ❹
			12 mA/17 mA	32 AC/DC	3 mA	800T-N363x ❹
			9 mA/14 mA	48 AC/DC	3 mA	800T-N364x ❹
			3.3 mA/6 mA	120 AC	—	800T-N320x ❹
			4.5 mA/6.2 mA	130 AC/DC	3 mA	800T-N321x ❹

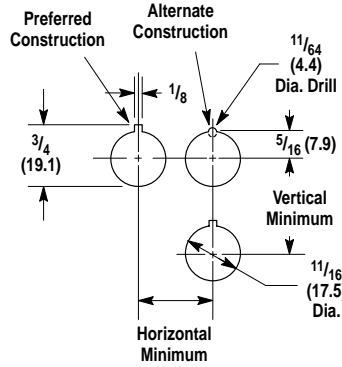
- ❷ Typical current draw varies with LED color. The first mA value is for a green or blue LED and the second mA value is for a red or amber LED.
- ❸ All LEDs except 120V have an internal shunt resistor for use with solid-state outputs. LEDs will not illuminate below listed leakage current.
- ❹ To complete the cat. no. replace the x with the first letter of the desired color: **A**mber, **G**reen, **R**ed, **B**lue, or **W**hite. White LEDs only available in 6V and 24V.

Approximate Dimensions and Shipping Weights

Dimensions in inches (millimeters). Dimensions are not intended to be used for manufacturing purposes.

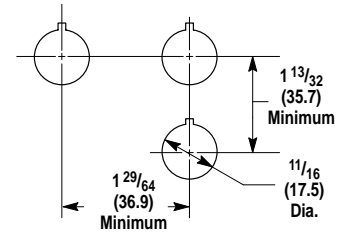
Mounting Instructions for 18 mm Small Pilot Lights

Type A Legend Plate



Cat. No. 800T-N515

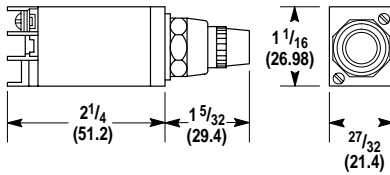
Type B Legend Plate



Cat. No. 800T-N516

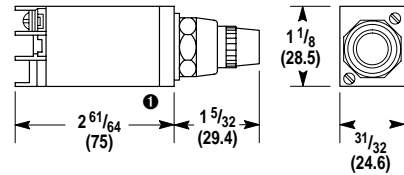
Device	Dimension	
	Horizontal	Vertical
800T-PS, PSD, PST, QS, QST and RST	31/32 (24.6)	1-5/32 (29.4)
800T-PSDT	1-3/64 (26.6)	1-13/64 (30.6)

Small Pilot Light Including Push-To-Test



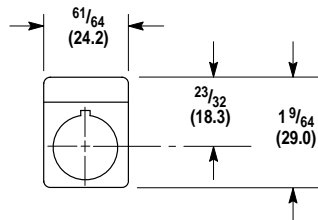
Approximate Shipping Weight
 3 oz. (0.08 kg)

Small Pilot Light Dual Input (Diode)



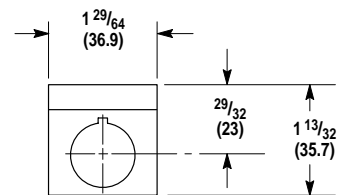
Approximate Shipping Weight
 3 oz. (0.08 kg)

Legend Plate for Small Pilot Light Type A Legend



Cat. No. 800T-N515

Legend Plate for Small Pilot Light Type B Legend



Cat. No. 800T-N516
 (Automotive Industry Type)

① Transfer dual input pilot light dimension is 2-31/32 (75.4).