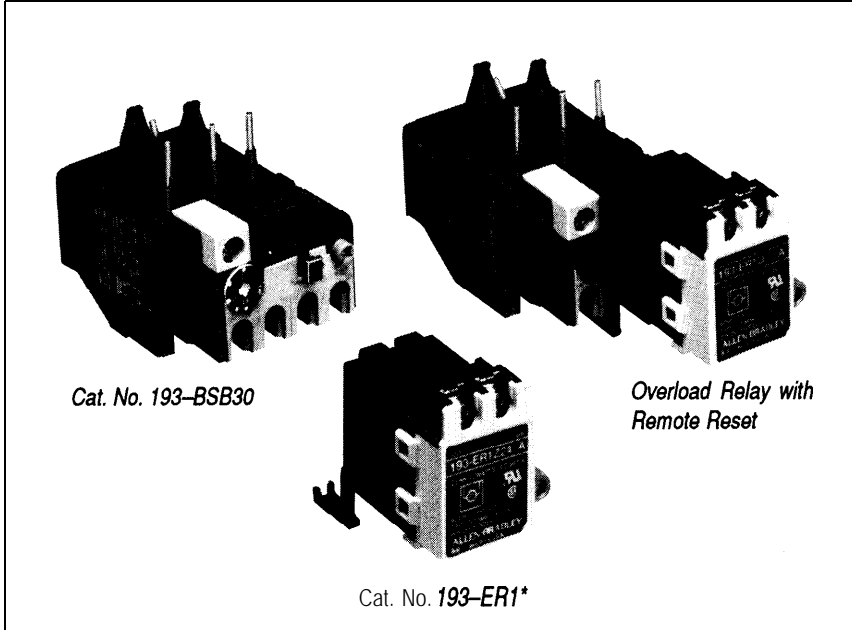


REMOTE RESET FOR OVERLOAD RELAYS



Description - A new electrically operated remote reset attachment is available for use with all Series B Bulletin 193 overload relays. This reset accessory mounts on top of the overload relay and allows the overload relay to be electrically reset from a remote location. The reset can be wired from a push button or controlled by a PLC output card. A wide range of coils in both AC and DC are available for the accessory allowing it to be used in varied applications.

PRODUCT SELECTION

Description	Cat. No.
Remote Reset for Overload Relays	193-ER1*

- **Coil Voltage Code** - The catalog number as listed is not complete. To complete the catalog number, select a coil code from the chart below and insert into the catalog number. For other voltages, consult your nearest Allen-Bradley Sales Office.

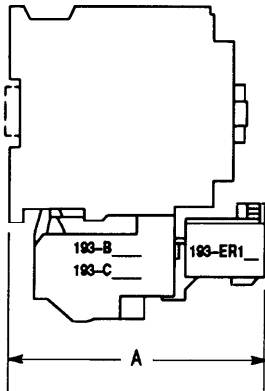
Voltage	24V 50/60Hz	120V/60Hz 110V/50Hz	240V/60Hz 220V/50Hz	12V DC	24V DC	48V DC	115V DC
Coil Code	J	D	A	Z12	Z24	Z48	Z01

SPECIFICATIONS

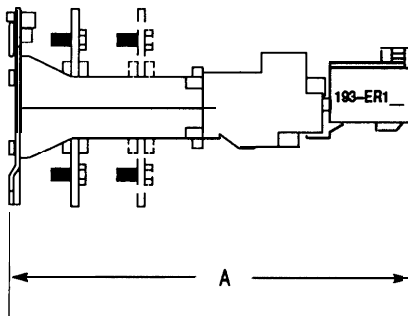
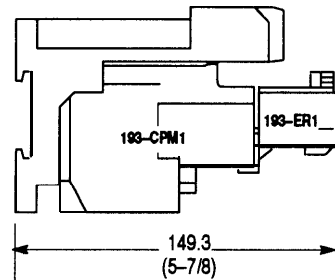
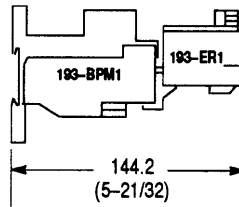
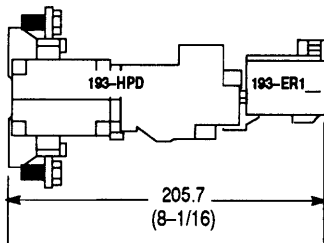
Operating Voltage	± 10 -15% Rated Coil Voltage	
Coil Burden	AC - 18VA	DC - 12Watts
Response Time	AC - 20 mSec	DC - 100 mS
Duty Cycle	20% Not to Exceed 2 Minutes every 10 Minutes	
Ambient Temperature Range	Operation	-5°C to +40°C (23°F to +104°F)
	Storage	-50°C to +70°C (-58°F to 158°F)

APPROXIMATE DIMENSIONS

Dimensions in millimeters (inches). Dimensions are not intended for manufacturing purposes. Approximate shipping weight for Cat. No. -193-ER1 is .1 kg (.24 lbs.).



Contactor Cat. No.	A Deep
100-A09, -A12	146.1 (5-3/4)
100-A18, -A24	151.1 (5-15/16)
100-A30	147.6 (5-13/16)
100-A38, -A45	141.8 (5-9/16)
100-A60, -A75	156.2 (6-1/8)



Overload Relay Cat. No.	A Deep
193-DP	267.9 (10-1/2)
193-EPD, -FPD	283.2 (11-3/32)
193-GPD	261 (5-1/4)



Allen-Bradley has been helping its customers improve productivity and quality for 90 years. A-B designs, manufactures and supports a broad range of control and automation products worldwide. They include logic processors, power and motion control devices, man-machine interfaces and sensors. Allen-Bradley is a subsidiary of Rockwell International, one of the world's leading technology companies.



With major offices worldwide.

- Algeria • Argentina • Australia • Austria • Bahrain • Belgium • Brazil • Bulgaria • Canada • Chile • China, PRC • Colombia • Costa Rica • Croatia • Cyprus • Czech Republic • Denmark • Ecuador • Egypt • El Salvador • Finland • France • Germany • Greece • Guatemala • Honduras • Hong Kong • Hungary • Iceland • India • Indonesia • Israel • Italy • Jamaica • Japan • Jordan • Korea • Kuwait • Lebanon • Malaysia • Mexico • New Zealand • Norway • Oman • Pakistan • Peru • Philippines • Poland • Portugal • Puerto Rico • Qatar • Romania • Russia-CIS • Saudi Arabia • Singapore • Slovakia • Slovenia • South Africa, Republic • Spain • Switzerland • Taiwan • Thailand • The Netherlands • Turkey • United Arab Emirates • United Kingdom • United States • Uruguay • Venezuela • Yugoslavia

World Headquarters, Allen-Bradley, 1201 South Second Street, Milwaukee, WI 53204 USA, Tel: (1) 414 382-2000 Fax: (1) 414 382-4444