



# IntelliCenter 1.4.7 SP5

- Added support for E1+



**E1+ Electronic Overload**  
>DeviceNet side module  
>2 inputs, 1 output  
  
>Protective functions:  
- Overload - Underload  
- Jam  
  
>Network reset capability  
  
>Information:  
- Percent thermal capacity  
- Percent full load amps  
- Warning / trip status

- Added support for E3 being used in Feeder Applications



**E3 Overload**  
Feeder Applications  
  
>Built-in DeviceNet  
>4 inputs, 2 outputs  
  
>Phase current monitoring  
of 0.4 to 5000 Amp  
>Ground fault current  
detection  
>Additional protective features:  
- Overload, Underload  
- Phase loss  
- Current imbalance

- Corrected issue where 16<sup>th</sup> bit was not shown when viewing/changing an enumeration parameter in Monitor screen.
- Corrected a rare issue which caused some values to be reported incorrectly in the Monitor view (for 1336PlusII).
- Corrected several bugs that deal with editing Standard I/O.

**Service Pack 4 will only update IntelliCenter version 1.4.7 and includes all updated from service packs 1-4b.**

# IntelliCenter 1.4.7 SP4b

- Corrected “Group By MCC Loc” button to work numerically as opposed to lexicographically.
- Corrected rare issues that occurred when “online” lineups were mixed with “offline” lineups within a workspace.
- Corrected issues introduced by previous service pack SP4 (editing I/O on aux device, random message boxes).

**Service Pack 4 will only update IntelliCenter version 1.4.7 and includes all updated from service packs 1-3.**

# IntelliCenter 1.4.7 SP4

- Added support for PowerFlex 700H and PowerFlex 400



The screenshot displays two separate monitor views within the IntelliCenter software. The top view is titled "Monitor View : pf 700h Test (offline) - PowerFlex700H" and features a vertical grey cabinet unit. The bottom view is titled "Monitor View : PF400 Test (offline) - PowerFlex400 -" and features a smaller, wider cabinet unit with a control panel. Both views include a list of technical specifications and features for their respective drive models.

**Power Flex AC Drive 20-COMM-D DeviceNet**  
>MCC ratings available:  
200-450 HP  
(132 - 250 kW); 380V - 480V  
>Volts per hertz or sensorless vector operation  
>7 line graphical human interface module  
>Internal NetLinX communication adapter

**Power Flex AC Drive 22-COMM-D DeviceNet**  
>MCC ratings available: 7.5 -100 HP  
(5.5 - 75 kW); 200V - 480V  
>Fan/Pump Applications  
>PID Controller  
>Integral Keypad  
>Internal NetLinX communication adapter  
>Built-in Communications for RS-485, Modbus RTU, Johnson Metasys N2

- Corrected code to read new CIP EDS files format allowing inline parameter enumeration. ODVA EDS files required enumeration in its own section.
- Expanded Event descriptions to 100 characters.

Service Pack 4 will only update IntelliCenter version 1.4.7 and includes all updated from service packs 1-3.

# IntelliCenter 1.4.7 SP3

Service Pack 3 contains the following enhancements:

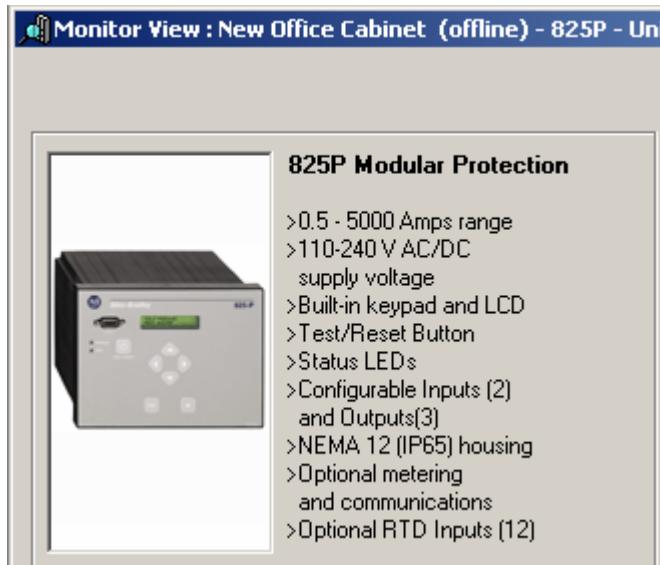
- Fixed bug with registering components.
- Fixed bug that occurs with print setup when no printers are installed.

**Service Pack 3 contains all the updates from Service Pack 1 and 2.**

# IntelliCenter 1.4.7 SP1

Service Pack 1 contains the following enhancements:

- Support for the new 825P Modular Protection Device



- Addition of new Medium Voltage structure codes for SMC-Flex Units
- Fixed minor issues with creating Data CD
- Software now checks for minimum versions of databases and warns if version is not current.

This service pack can only be applied to version 1.4.7 software. It will not update previous versions.