

Quick Selection Guide	page 2–2
Technical Definitions and Terminology	page 2–7
Introduction	page 2–9
Applications	page 2–16
Products	
871TM All Stainless Steel Tubular	page 2–21
872C General Purpose Tubular	page 2–45
872C Extended Sensing	page 2–59
872C QuadroPlex	page 2–62
872C Complementary Output	page 2–64
872C Relay Output	page 2–66
871C Miniature Tubular	page 2–69
871C Plastic Barrel Tubular	page 2–69
871C Extended Features Tubular	page 2–69
871C NAMUR Intrinsically Safe	page 2–82
871C Analog Output	page 2–85
871Z Weld Field Immune Tubular	page 2–87
871ZC Weld Field Immune Tubular	page 2–93
871T Stainless Barrel Tubular	page 2–97
871U Isolated Output Tubular	page 2–105
871D Cylinder Position	page 2–109
871D WorldClamp	page 2–118
871P VersaCube	page 2–121
871P Equal Sensing VersaCube	page 2–128
871P Rectangular	page 2–131
871P Can Sensors	page 2–135
871L Limit Switch Style	page 2–143
872L Limit Switch Style	page 2–143
802PR Limit Switch Style	page 2–149
871FM Miniature Flat Pack	page 2–163
871F Flat Pack & Block	page 2–169
871R Ring Sensors	page 2–179
871S Slot Sensors	page 2–179
Accessories	page 2–185
Catalog Number Index	page 9–1
Comprehensive Product Index	page 10–1

Quick Selection Guide

Weld Field Immune Proximity Sensors

871Z Weld Field Immune Tubular page 2-87
 871ZC Weld Field Immune Tubular page 2-93
 871D Cylinder Position Sensor page 2-109
 871D WorldClamp™ page 2-118
 871P Weld Field Immune VersaCube page 2-121
 871P Weld Field Immune Rectangular page 2-131
 871F Weld Field Immune Puck Style page 2-175

Hazardous Location Proximity Sensors

871TM 2-Wire DC Intrinsically Safe page 2-31
 871C NAMUR Intrinsically Safe page 2-82
 802PR Hazardous Location page 2-149

Ferrous/Nonferrous Selective Proximity Sensors

871TM Ferrous Selective page 2-39
 871T Ferrous Selective page 2-102
 871TM Nonferrous Selective page 2-39

Extended Temperature Range Proximity Sensors

871C Extended Temperature page 2-80
 Other extended temperature range models available as special order items. Contact factory for details.

871TM All Stainless Steel



Description	Tubular Style	
	Stainless Steel Face/Threaded Stainless Steel Barrel	
Diameter	12, 18, 30mm	
Connections	<ul style="list-style-type: none"> • Cable (PVC or ToughLink™) • Mini Quick-Disconnect • Micro Quick-Disconnect • Binder Quick-Disconnect 	
Available Models	Type	Page Number
	AC/DC 2-Wire PLC Interfacer	2-22
	AC/DC 2-Wire	2-25
	DC 2-Wire	2-28
	2-Wire DC Intrinsically Safe	2-31
	DC 3-Wire	2-36
	Ferrous Selective DC 3-Wire	2-39
	Nonferrous Selective DC 3-Wire	2-39
	Submersible DC 3-Wire	2-42
	DeviceNet™	8-14

872C General Purpose



Description	Tubular Style	
	Plastic Face/Threaded Nickel-Plated Brass Barrel	
Diameter	8, 12, 18, 30mm	
Connections	<ul style="list-style-type: none"> • Cable (PVC) • Mini Quick-Disconnect • Micro Quick-Disconnect • Pico Quick-Disconnect 	
Available Models	Type	Page Number
	AC 2-Wire	2-46
	DC 2-Wire	2-49
	DC 3-Wire	2-51
	DC 3-Wire Short Barrel	2-55
	DC 3-Wire Extended Sensing	2-59
	DC 2-Wire QuadroPlex	2-62
	DC 4-Wire Complementary Output	2-64
AC/DC 2-Wire Relay Output	2-66	

871C Miniature Tubular
Plastic Barrel Tubular
Extended Features Tubular
NAMUR Intrinsically Safe



Description	Tubular Style	
	Plastic Face/Threaded Nickel-Plated Brass Barrel Plastic Face/Smooth Nickel-Plated Brass Barrel Plastic Face/Threaded Plastic Barrel	
Diameter	3, 4, 5, 6.5, 8, 12, 18, 30mm	
Connections	<ul style="list-style-type: none"> • Cable (PVC or PUR) • Mini Quick-Disconnect • Micro Quick-Disconnect • Pico Quick-Disconnect 	
Available Models	Type	Page Number
	AC 2-Wire Full-Featured	2-70
	AC 2-Wire Plastic Barrel	2-73
	DC 3-Wire Plastic Barrel	2-75
	DC 3-Wire Small Diameter	2-77
	Extended Temperature Range DC 3-Wire	2-80
	NAMUR Intrinsically Safe	2-82
Analog Output	2-85	

871Z Weld Field Immune



Description	Tubular Style	
	Teflon-Coated Plastic Face/ Threaded Teflon-Coated Brass Barrel	
Diameter	12, 18, 30mm	
Connections	<ul style="list-style-type: none"> • Cable (ToughLink™) • Mini Quick-Disconnect • Micro Quick-Disconnect 	
Available Models	Type	Page Number
	Weld Field Immune AC/DC 2-Wire	2-88
	Weld Field Immune DC 3-Wire	2-91

871ZC Weld Field Immune



Description	Tubular Style	
	Teflon-Coated Plastic Face/Threaded Copper Barrel	
Diameter	12, 18, 30mm	
Connections	<ul style="list-style-type: none"> • Mini Quick-Disconnect • Micro Quick-Disconnect 	
Available Models	Type	Page Number
	Weld Field Immune AC/DC 2-Wire	2-94

871T Stainless Barrel



Description	Tubular Style	
	All metal sensing:	Plastic Face/Threaded Stainless Steel Barrel
	Ferrous Selective:	Stainless Steel Face/ Threaded Stainless Steel Barrel
Diameter	12, 18mm	
Connections	<ul style="list-style-type: none"> • Cable (PVC) • Mini Quick-Disconnect 	
Available Models	Type	Page Number
	AC 2-Wire	2-98
	DC 3-Wire	2-100
	Ferrous Selective AC 2-Wire or 4-Wire	2-102

Inductive Proximity Sensors

Quick Selection Guide

871U Isolated Output



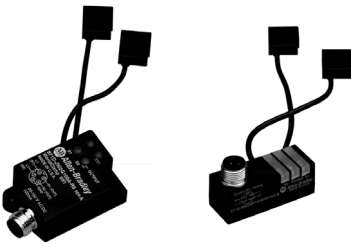
Description	Tubular Style Plastic Face/Threaded Nickel-Plated Brass Barrel	
Diameter	12, 18mm	
Connections	<ul style="list-style-type: none"> Cable (PVC) Mini Quick-Disconnect 	
Available Models	Type	Page Number
	AC/DC 4-Wire or 6-Wire	2-106

871D Cylinder Position



Description	In-port Cylinder Position Style Ceramic Face/Stainless Steel Probe Assembly	
Size	64mm x 48mm x 37mm installed	
Connections	<ul style="list-style-type: none"> Mini Quick-Disconnect Micro Quick-Disconnect 	
Available Models	Type	Page Number
	DC 3-wire	2-110
	AC/DC 2-wire	2-112

871D WorldClamp™



Description	On-Clamp Cylinder Position Style Power Clamp and Gripper Style	
Size	47mm x 18mm x 18mm 55mm x 35mm x 19mm	
Connections	<ul style="list-style-type: none"> Micro Quick-Disconnect 	
Available Models	Type	Page Number
	DC 4-wire	2-116
	AC/DC 5-wire	2-118

871P VersaCube™



Description	Rectangular Style Plastic Housing	
Sizes	35mm x 35mm x 78mm 40mm x 40mm x 69mm	
Connections	<ul style="list-style-type: none"> Mini Quick-Disconnect Micro Quick-Disconnect 	
Available Models	Type	Page Number
	General Purpose DC 3-Wire VersaCube	2-122
	Weld Field Immune DC 3-Wire VersaCube	2-122
	General Purpose AC/DC 2-Wire VersaCube	2-125
	Weld Field Immune AC/DC 2-Wire VersaCube	2-125
	General Purpose DC 3-Wire Equal Sensing VersaCube	2-128

871P Rectangular



Description	Rectangular Style Plastic Housing	
Sizes	35mm x 35mm x 78mm	
Connections	<ul style="list-style-type: none"> • Cable (PVC) • Mini Quick-Disconnect • Micro Quick-Disconnect 	
Available Models	Type	Page Number
	General Purpose AC 2-Wire	2-132
	Weld Field Immune AC 2-Wire	2-132

871P Can Sensors



Description	Can Sensor Style Stainless Steel Housing/Plastic Face	
Sizes	76mm x 38mm x 59mm 140mm x 44.5mm x 59mm	
Connections	<ul style="list-style-type: none"> • Cable (PVC) • Mini Quick-Disconnect 	
Available Models	Type	Page Number
	Short-Range AC 2-Wire Inductive Can	2-136
	Long-Range AC 2-Wire Inductive Can	2-136
	Short-Range DC 4-Wire Inductive Can	2-138
	Long-Range DC 4-Wire Inductive Can	2-138
	Motion DC 4-Wire Inductive Can	2-140

871L & 872L Limit Switch Style



Descriptions	Limit Switch Style Plastic Body/17-position Head	
Sizes	40mm x 40mm x 120mm	
Connections	<ul style="list-style-type: none"> • Mini Quick-Disconnect • Micro Quick-Disconnect • Conduit/Terminal 	
Available Models	Type	Page Number
	AC 2-Wire	2-144
	AC/DC 2-Wire	2-144
	DC 3-Wire	2-146

802PR Limit Switch Style

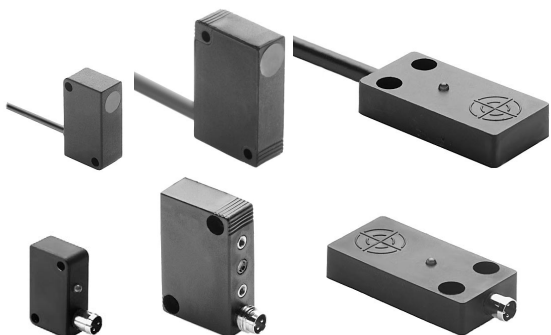


Description	Limit Switch Style Glass-Reinforced Polyester Housing	
Size	42mm x 41mm x 109mm	
Connections	<ul style="list-style-type: none"> • Cable (STO or ToughLink™) • Mini Quick-Disconnect • Micro Quick-Disconnect • Conduit/Terminal 	
Available Models	Type	Page Number
	AC/DC 2-Wire	2-150
	Hazardous Location AC/DC 2-Wire	2-155
	AC 2-Wire (High Output)	2-157
	Hazardous Location AC 2-Wire (High Output)	2-161

Inductive Proximity Sensors

Quick Selection Guide

871FM Miniature Flat Pack



Description	Miniature Flat Pack Style Plastic Body	
Sizes	28mm x 16mm x 11mm 40mm x 26mm x 12mm 25mm x 50mm x 10mm	
Connections	<ul style="list-style-type: none"> Cable (PVC) Pico Quick-Disconnect 	
Available Models	Type	Page Number
	AC 2-Wire	2-164
	DC 3-Wire	2-166

871F Flat Pack & Block



Descriptions	Flat Pack Style Aluminum Body	Block Style Plastic Body
Sizes	50mm x 50mm x 40mm 40mm x 50mm x 100mm	80mm x 80mm x 40mm 83mm x 94mm x 40mm
Connections	<ul style="list-style-type: none"> Cable (PVC) Mini Quick-Disconnect Micro Quick-Disconnect 	<ul style="list-style-type: none"> Mini Quick-Disconnect Conduit/Terminal
Available Models	Type	Page Number
	Complementary Output DC 4-Wire Flat Pack	2-170
	2-Wire AC/DC Flat Pack	2-173
	Weld Field Immune AC 2-Wire Flat Pack	2-175
	DC 3-Wire Block	2-177

871R Ring Sensors & 871S Slot Sensors



Description	Ring and Slot Style Plastic and Metal Housing	
Ring Dia.	12, 20, 50, and 100mm	
Slot Gap	30mm	
Connections	<ul style="list-style-type: none"> Cable (PVC) Micro Quick-Disconnect 	
Available Models	Type	Page Number
	871R DC 3-Wire Ring Style	2-180
	871S DC 3-Wire Slot Style	2-183