



PowerFlex 20-HIM-A6 / -C6S HIM Firmware 2.001

This release note describes major revision 2, minor revision 1 of firmware for the PowerFlex 20-HIM-A6 / -C6S HIM (Human Interface Module).

Introduction

The following information is included in this document:

Topic	Page
Enhancements	1
Corrected Anomalies	2
Determining Firmware Revision	3
Firmware Flashing	5
Restrictions	8
Compatible Revisions	9
Rockwell Automation Support	9
Product Satisfaction Return	9


Enhancements

This section describes the enhancements provided in this revision of firmware.

- Added Auto/Manual Preload feature to support PowerFlex 753 and 755 drives using drive firmware revision 3.xxx or later.
- When a fault or alarm is present and a fault or alarm pop-up HIM screen appears, added an ACK *soft* key to allow the user to acknowledge the fault which stops the backlight from flashing, but still keeps the fault pop-up screen active.
- Changed default setting of HIM Backlight Flash **Parameter 04 - [Fault Dspy Type]** from flashing the screen backlight to flashing the Status Bar only when a fault or alarm is present.
- Improved HIM Device Version menu navigation by adding *soft keys* PGUP (Page Up), PGDN (Page Down), TOP (Go To Top), and END (Go To End).
- The HIM now displays the IP address of the PowerFlex 755 embedded EtherNet/IP adapter instead of the text "Operational" when the Port 13 screen is displayed.
- Added the ability for continuous Parameter Linear List scrolling when pressing and holding either the Up or Down keys for 1 second or longer. Scrolling continues indefinitely until the key is released.
- The first line of the Status Bar now displays the text "DLX" when the DeviceLogix feature is enabled.
- Improved HIM screen contrast.

Corrected Anomalies









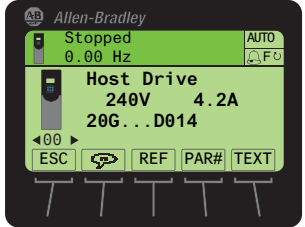
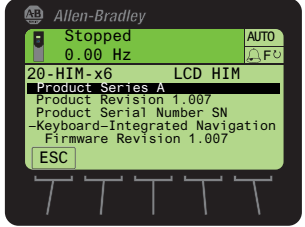
This section describes the anomalies corrected in this revision of firmware.

- Changed CopyCat feature to index parameters correctly when connected to a PowerFlex 70 drive.
- Using the HIM to jog now continues to command the drive until the JOG () key is released.
- The HIM now allows the user to scroll backwards through reserved diagnostics items.
- When transitioning from the top to the bottom of the fault queue, the HIM no longer freezes in position 32 of the linear list.
- When using the Startup feature, the HIM now identifies the option module port number when editing a parameter.
- For faults that are older than 10 hours, the HIM now displays their time stamps using the complete “hh:mm:ss” format.
- When customizing the Process screen, selecting a parameter will now automatically populate the parameter name or unit text by default.
- Corrected an issue with the Process screen to now have ▲ and ▼ arrows to navigate to unseen parameters when more than three parameters have been configured for display.
- HIM CopyCat feature now supports PowerFlex DC drives.
- Corrected an issue with the HIM CopyCat feature where the “Out of Memory” pop-up error would display randomly when the user deleted stored files.
- Corrected an issue with the HIM CopyCat feature where a device download would cause stored data to become corrupt.
- Selecting the PowerFlex 750-Series Universal Feedback Option Module from the Status screen no longer causes the HIM to reset.
- The HIM now properly accesses the *Device* parameters from a PowerFlex 750-Series DeviceNet Option Module.
- HIM CopyCat feature now correctly saves files with the correct instance number.
- Corrected an issue with the title line where transitioning between *Host* and *Device* parameters, the title would not always display properly.
- Corrected an issue where a PowerFlex 700VC drive would reset when saving data to a User Set.

Determining Firmware Revision

This section describes procedures to determine the firmware revision of your PowerFlex 20-HIM-A6 / -C6S HIM.

Using the 20-HIM-A6 / -C6S HIM

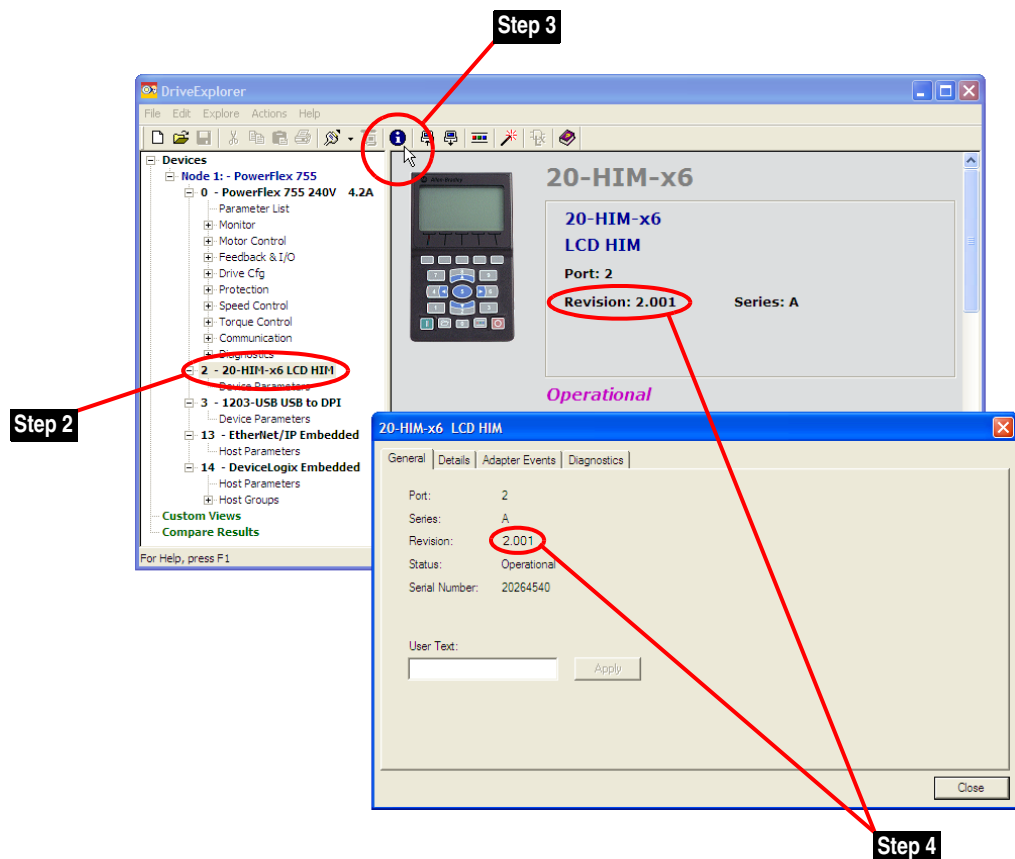
Step	Example Screens
<ol style="list-style-type: none"> 1. Access the HIM Status screen, which is displayed on HIM power up. 2. Use the  or  key to scroll to the drive Port in which the HIM is connected (for example, Port 1). 3. Press the  key to display its last-viewed folder. 4. Use the  or  key to scroll to the DIAGNOSTIC folder. 5. Use the  or  key to select Device Version. 6. Press the  (Enter) key to display device version information. 	 

Using DriveExplorer Lite/Full

1. Launch DriveExplorer and go online (via 1203-USB or 1203-SSS converter) with the drive that is connected to the HIM. As an alternative when using DriveExplorer Full, you can go online with a PowerFlex 755 drive on Ethernet through its embedded EtherNet/IP communication adapter.
2. In the DriveExplorer treeview, click on 20-HIM-x6 LCD HIM as shown in [Figure 1](#).
3. Click the information icon to display the HIM's Properties screen.
4. The "Revision:" field shows the present revision (for example, 1.007) of the HIM firmware.

► **TIP:** When clicking on the 20-HIM-x6 LCD HIM, the HIM firmware revision is also shown in the right pane of the DriveExplorer window.

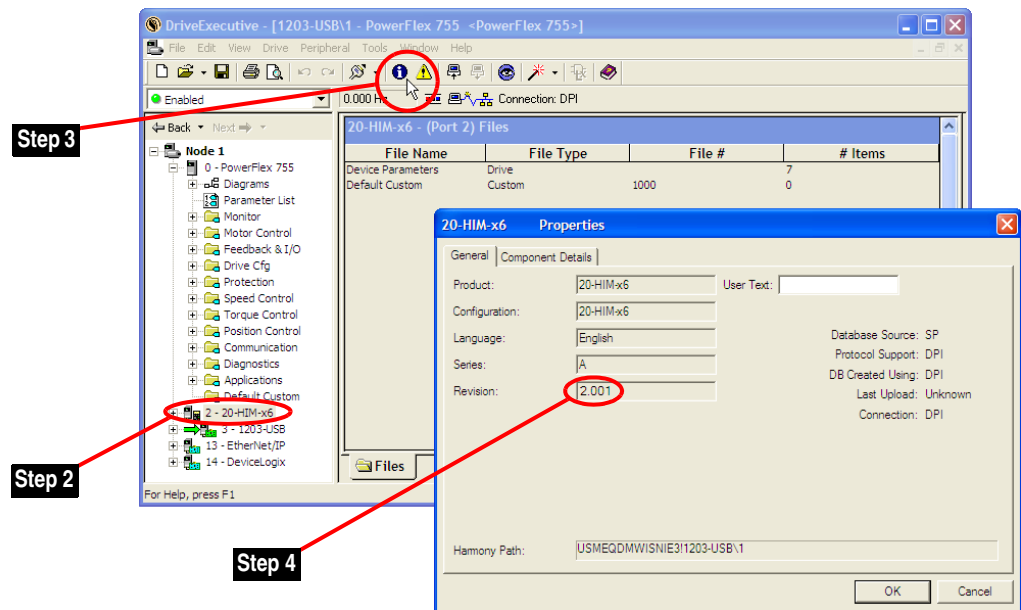
Figure 1 Information Icon in DriveExplorer Window



Using DriveExecutive

1. Launch DriveExecutive and go online (via 1203-USB or 1203-SSS converter) with the drive that is connected to the HIM.
2. In the DriveExecutive treeview, click on 20-HIM-x6 as shown in [Figure 2](#).
3. Click the information icon to display the HIM's Properties screen.
4. The "Revision:" field shows the present revision (for example, 1.007) of the HIM firmware.

Figure 2 Information Icon in DriveExecutive Window



Firmware Flashing

This section describes procedures to update your HIM firmware. Flash kits for drives, communications adapters, and peripherals are provided on the Allen-Bradley Web Updates site located at <http://www.ab.com/support/abdrives/webupdate>. Updating can only be performed using a 1203-USB or 1203-SSS converter. For information about how to connect to your drive, see the 1203-USB or 1203-SSS User Manual. They can be viewed/downloaded on the Literature Library web site located at www.literature.rockwellautomation.com.



ATTENTION: Risk of permanent equipment damage exists. Once an update has been started, do not remove power from the drive until after the download has completed and the HIM has re-initialized with the connected drive. If power is removed before this occurs, the HIM may be permanently damaged. A HIM that has been damaged in this way cannot be repaired.

Installing the Flash Kit

1. Go to the Allen-Bradley Web Updates site at <http://www.ab.com/support/abdrives/webupdate> and install the flash kit for the PowerFlex 20-HIM-A6 / -C6S HIM. (This also automatically installs the ControlFLASH software on your computer.)
2. You are now ready to use DriveExplorer, DriveExecutive, ControlFLASH or HyperTerminal to update the HIM. Refer to the respective section below and follow the instructions.

Using DriveExplorer Lite/Full to Update Firmware

1. With the Flash Kit installed (see [Installing the Flash Kit](#)), launch DriveExplorer and go online (via a 1203-USB or 1203-SSS converter) with the drive that is connected to the HIM.
2. In the DriveExplorer treeview, click on 20-HIM-x6 LCD HIM. Then click the information icon as shown in [Figure 1](#) to display the HIM's Properties screen.
3. On the HIM Properties screen, click the Details tab.

Important: This update may cause the HIM parameters to revert to their default values. You may want to save your configuration using DriveExplorer or the HIM CopyCat feature before updating.

4. To start the update, click the **Flash Update...** button. Then select "2.001.xx [language]" from the list of available updates and click **Next >**. Follow the remaining screen prompts until the update procedure completes and displays the new firmware revision (2.001).

Using DriveExecutive to Update Firmware

1. With the Flash Kit installed (see [Installing the Flash Kit](#)), launch DriveExecutive and go online (via 1203-USB or 1203-SSS converter) with the drive that is connected to the HIM.
2. In the DriveExecutive treeview, click on 20-HIM-x6. Then click the information icon as shown in [Figure 2](#) to display the HIM's Properties screen.
3. On the HIM Properties screen, click the Component Details tab.

Important: This update may cause the HIM parameters to revert to their default values. You may want to save your configuration using DriveExecutive or the HIM CopyCat feature before updating.

4. To start the update, click the **Flash Update** button. Then select the 20-HIM-x6 from the list of available devices and click **Next >**.

5. Select “2.001.xx [language]” from the list of available updates and click **Next >**. Follow the remaining screen prompts until the update procedure completes and displays the new firmware revision (2.001).

Using ControlFLASH to Update Firmware

1. With the Flash Kit installed (see [Installing the Flash Kit on page 6](#)), launch ControlFLASH by selecting **Start > (All) Programs > Flash Programming Tools > ControlFLASH**.
2. On the ControlFLASH Welcome screen, click **Next >**.
3. Choose the 20-HIM-x6 via [connection type] from the list and click **Next >**.

Important: This update may cause the HIM parameters to revert to their default values. You may want to save your configuration using the HIM CopyCat feature, DriveExplorer or DriveExecutive before updating.

4. Expand the treeview for the communication path you are using, and select the drive icon that represents the drive connected to the HIM you are updating. Then click **OK**.
5. If the Multiple Assemblies Found window is displayed, select “Port X - 20-HIM-x6” from the list and click **OK**.
6. With the Firmware Revision window displayed, select “2.001.xx [language]” from the list of available updates and click **Next >**. Follow the remaining screen prompts until the update procedure completes and displays the new firmware revision (2.001).

Using HyperTerminal to Update Firmware

1. With the Flash Kit installed (see [Installing the Flash Kit on page 6](#)), launch HyperTerminal and go online (via 1203-USB or 1203-SSS converter) with the powered drive that is connected to the HIM.
2. Press the **Enter** key until the main menu ([Figure 3](#)) appears.

Figure 3 Main Menu

```
Main Menu - Enter Number for Selection
1> Display Setup Parameters
2> Display Event Queue
3> Flash Upgrade
```

3. In the main menu, press **3** to flash upgrade. Then press the number key that corresponds to the “20-HIM-x6” in the list, and press **Y** (for Yes) to update the firmware. The terminal program will start displaying the letter “C”. This signals the XMODEM protocol that the download may proceed. You then have one minute to start the transfer.

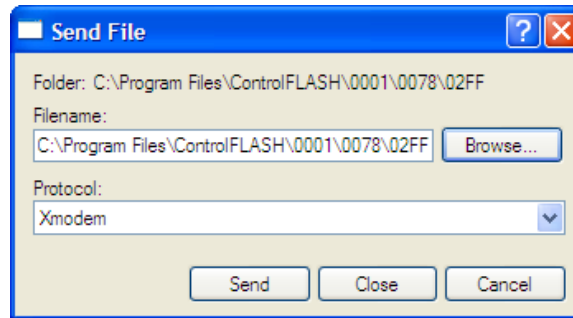


ATTENTION: Risk of injury or equipment damage exists. When you perform an update, the drive will fault if it is receiving control I/O. Verify that the drive has stopped safely before beginning an update.

4. Select **Transfer > Send File** to display the Send File screen ([Figure 4](#)).
5. Click **Browse** and navigate to the flash file located in:

C:\Program Files\ControlFLASH\0001\0078\02FF

Figure 4 Send File Screen



6. In the Select File to Send window list, click on the “20HIMx6 BOOT 2.001.01.bin” file. Then click **Open**. This file name now appears in the Filename box in the Send File screen.
7. In the Protocol box, select “Xmodem.”
8. Click **Send**. A dialog box appears and reports the progress of the update. When it is complete, the message “Flash Complete” appears. Press any key to continue.

Important: Keep the HIM powered for 15 seconds after the operation has completed or until the HIM has re-initialized with the connected drive.



TIP: To cancel the firmware update at any time, press **CTRL-X**.

9. Repeat steps 2 through 8 for the “20HIMx6 APP 2.001.01 [language].bin” file.
10. Press the **Enter** key to return to the main menu.

Restrictions

No restrictions apply to this revision of firmware.

Compatible Revisions

To use this revision of firmware, update your system tools as follows:

Update this...	To this or later...
DriveExplorer Lite/Full	6.01
DriveExecutive	5.01
PowerFlex 7-Class Drive	all revisions compatible
20-HIM-A6 / -C6S HIM	all revisions compatible
RSLinx Classic	2.43

Rockwell Automation Support

Rockwell Automation provides technical information on the web to assist you in using our products. At <http://support.rockwellautomation.com>, you can find technical manuals, a knowledge base of Frequently Asked Questions (FAQs), technical and application notes, sample code and links to software service packs, and a MySupport feature that you can customize to make the best use of these tools.

Rockwell Automation also provides complimentary phone support for drives, communication adapters, and peripherals. If you experience a problem with the HIM, please review the information in its User Manual. For further help in getting your HIM operational, contact a Customer Support representative:

United States	(1) 262.512.8176 Monday – Friday, 7am – 6pm CST
Outside United States	Please contact your local Rockwell Automation representative for any technical support issues.

For an additional level of technical phone support for installation, configuration and troubleshooting, we offer TechConnect Support programs. For more information, contact your local distributor or Rockwell Automation representative, or visit <http://support.rockwellautomation.com>.

Product Satisfaction Return

Rockwell Automation tests all products to ensure that they are fully operational when shipped from the manufacturing facility. However, if your product is not functioning and needs to be returned:

United States	Contact your distributor. You must provide a Customer Support case number (see phone number above to obtain one) to your distributor to complete the return process.
Outside United States	Please contact your local Rockwell Automation representative for return procedure.

Allen-Bradley Drives

U.S. Allen-Bradley Drives Technical Support - Tel: (1) 262.512.8176, Fax: (1) 262.512.2222, Email: support@drives.ra.rockwell.com, Online: www.ab.com/support/abdrives

www.rockwellautomation.com

Power, Control and Information Solutions Headquarters

Americas: Rockwell Automation, 1201 South Second Street, Milwaukee, WI 53204-2496 USA, Tel: (1) 414.382.2000, Fax: (1) 414.382.4444

Europe/Middle East/Africa: Rockwell Automation, Pegasus Park, De Kleetlaan 12a, 1831 Diegem, Belgium, Tel: (32) 2 663 0600, Fax: (32) 2 663 0640

Asia Pacific: Rockwell Automation, Level 14, Core F, Cyberport 3, 100 Cyberport Road, Hong Kong, Tel: (852) 2887 4788, Fax: (852) 2508 1846