

CENTERLINE 2100 Motor Control Centers

Installation Manual

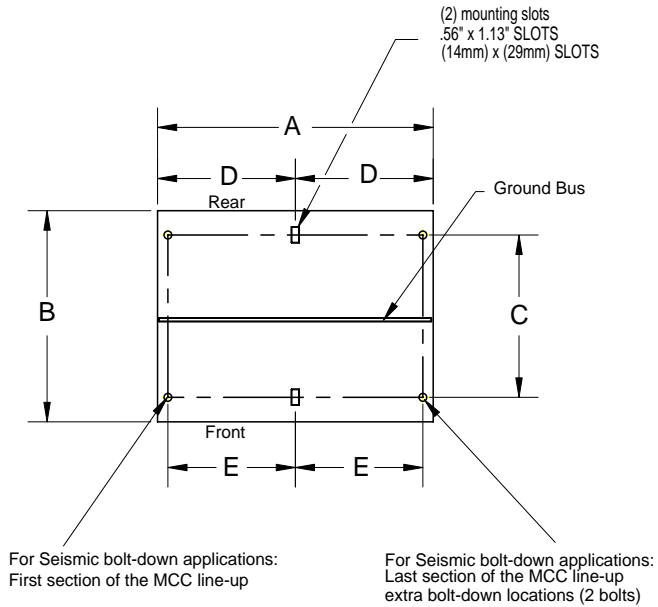
Document Update

Description

This publication provides updates to CENTERLINE Motor Control Centers Installation Manual, publication 2100-IN012B-EN-P, April 2005. Please place this in your document for future reference.

*Reference page 2-3 of
CENTERLINE Motor Control Centers Installation Manual.*

Figure 2.2 Mounting Dimensions for 15" and 20" Deep Front-Mounted Section



| Dimension | 15" Deep | | | | 20" Deep | | | |
|------------------------|---------------------|---------------------|---------------------|---------------------|---------------------|---------------------|---------------------|---------------------|
| | 20" Wide in (mm) | 25" Wide in (mm) | 30" Wide in (mm) | 35" Wide in (mm) | 20" Wide in (mm) | 25" Wide in (mm) | 30" Wide in (mm) | 35" Wide in (mm) |
| A | 20.00 (508) | 25.00 (635) | 30.00 (762) | 35.00 (889) | 20.00 (508) | 25.00 (635) | 30.00 (762) | 35.00 (889) |
| B | 15.00 (381) | 15.00 (381) | 15.00 (381) | 15.00 (381) | 20.00 (508) | 20.00 (508) | 20.00 (508) | 20.00 (508) |
| C | 11.56 (294) | 11.56 (294) | 11.56 (294) | 11.56 (294) | 16.56 (421) | 16.56 (421) | 16.56 (421) | 16.56 (421) |
| D | 10.00 (254) | 12.50 (318) | 15.00 (381) | 17.50 (445) | 10.00 (254) | 12.50 (318) | 15.00 (381) | 17.50 (445) |
| E⁽¹⁾ | 9.25 (235) | 11.75 (298) | 14.25 (362) | 16.75 (425) | 9.25 (235) | 11.75 (298) | 14.25 (362) | 16.75 (425) |

⁽¹⁾ Applies to first and last sections that require seismic ratings.