

A

B

C

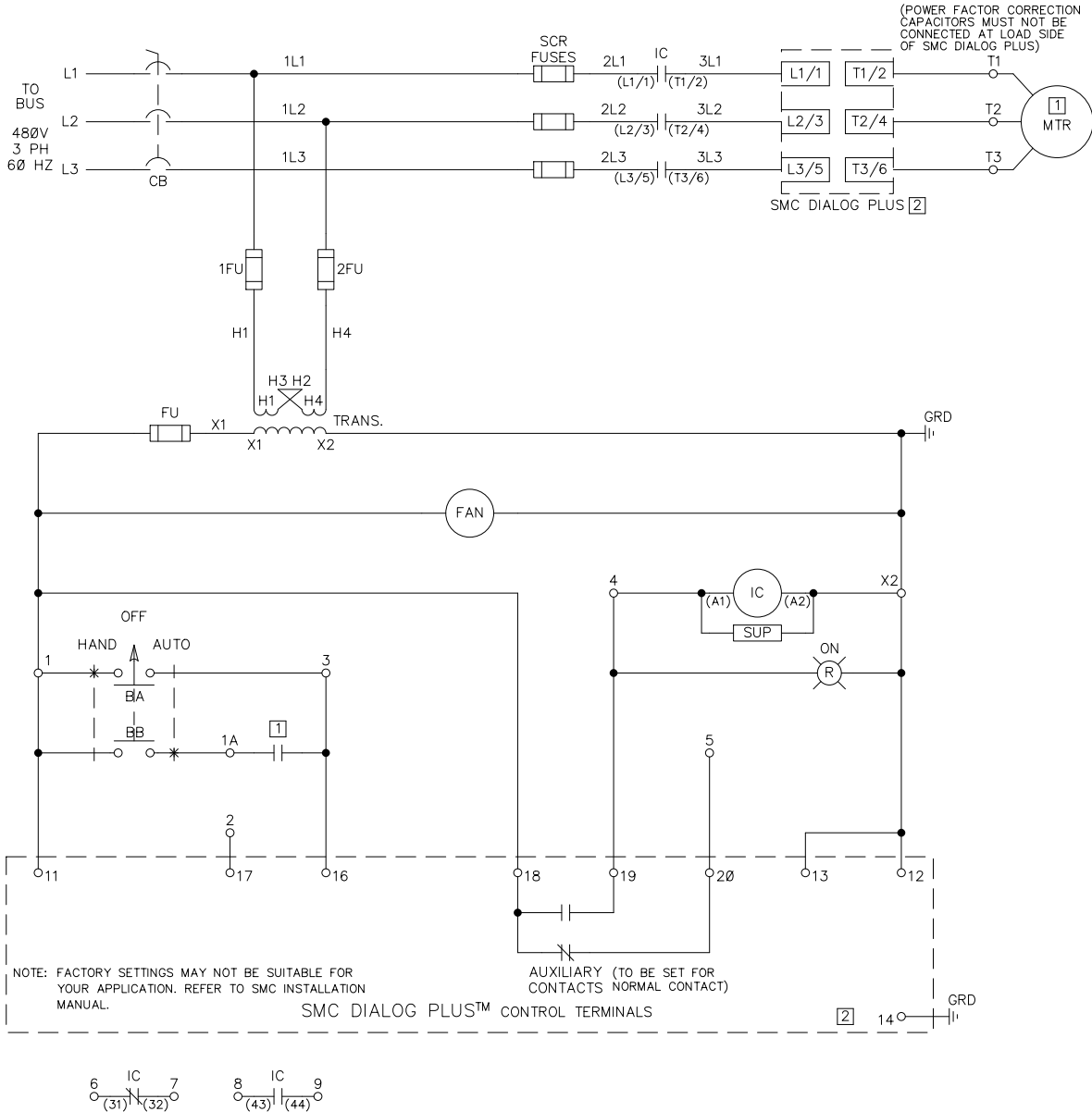
D

E

F

G

H

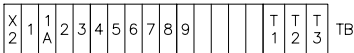


(POWER FACTOR CORRECTION CAPACITORS MUST NOT BE CONNECTED AT LOAD SIDE OF SMC DIALOG PLUS)

SMC DIALOG PLUS [2]

NOTE: FACTORY SETTINGS MAY NOT BE SUITABLE FOR YOUR APPLICATION. REFER TO SMC INSTALLATION MANUAL.

SMC DIALOG PLUS™ CONTROL TERMINALS



THE CIRCUIT IS TYPICAL OF A 35 AMP BUL 2155G SMC UNIT WITH TRANSFORMER CONTROL OPTIONS:

- A 480/120V CONTROL TRANSFORMER WITH PRIMARY FUSES
- 1 'HAND-OFF-AUTO' SELECTOR SWITCH
- 1 'ON' PILOT LIGHT (RED)
- 3 FORM 1Ø1 FUSES FOR SCR ISOLATION
- 1 BUL 1ØØ ISOLATION CONTACTOR
- 1 N.O. AUXILIARY CONTACT ON THE ISOLATION CONTACTOR
- 1 N.C. AUXILIARY CONTACT ON THE ISOLATION CONTACTOR

A COMPLETE AND ACCURATE REPRESENTATION OF THE CIRCUIT DEPENDS ON THE SIZE AND OPTIONS ORDERED.

NOTES

[1] REMOTE DEVICE

[2] BULLETIN 15Ø SOLID STATE MOTOR CONTROLLER. REFER TO SMC USER MANUAL FOR APPLICATION DATA.

References		BUL. 2155G 35 AMP	
Revision	Release	Dimensions Apply Before Surface Treatment	Dimensions in Inches Tolerances Unless Otherwise Specified
1	08/20/01	2 Place Decimal ± .02	3 Place Decimal ± .005
		Angles ± 1	
Refer. Book		Dr.	Date
		Chkd.	Date
		Appd.	Date

**Allen-Bradley**  
**Rockwell Automation**

Sheet 1 Of 1  
 Dwg Size C  
**2155GWB006**

P.C.P. AutoCAD