

1 | 2 | 3 | 4 ↓ 5 | 6 | 7 | 8

A

B

C

D

E

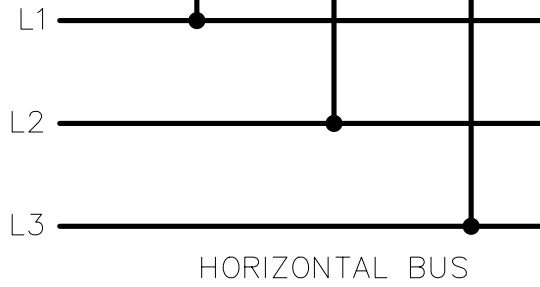
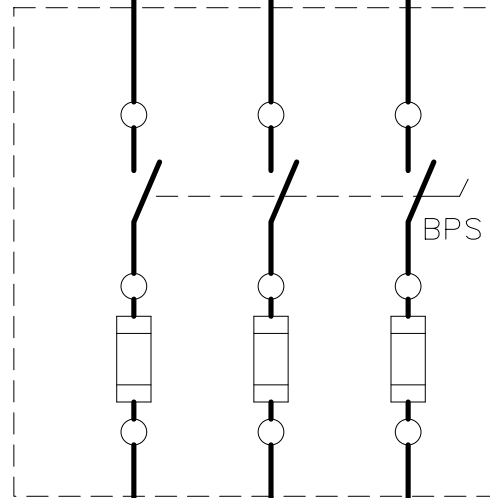
F

G

H


TOP ENTRY
USER'S INCOMING LINE CABLES

ØL1 ØL2 ØL3



THE CIRCUIT IS TYPICAL OF A 600A BUL 2192M FUSIBLE DISCONNECT SWITCH MAIN UNIT

A COMPLETE AND ACCURATE REPRESENTATION OF THE CIRCUIT DEPENDS ON THE SIZE AND OPTIONS ORDERED.

References		BUL. 2192M		 Allen-Bradley Rockwell Automation
Revision		600 AMP		
1	08/28/01	Dimensions Apply Before Surface Treatment Dimensions in Inches Tolerances Unless Otherwise Specified 2 Place Decimal ±.02 3 Place Decimal ±.005 Angles ± 1	Dr. Chkd. Appd.	Date Date Date
Refer. Book				Sheet 1 Of 1 Dwg Size A 2192MWB001