

1 | 2 | 3 | 4 ↓ 5 | 6 | 7 | 8

A

B

C

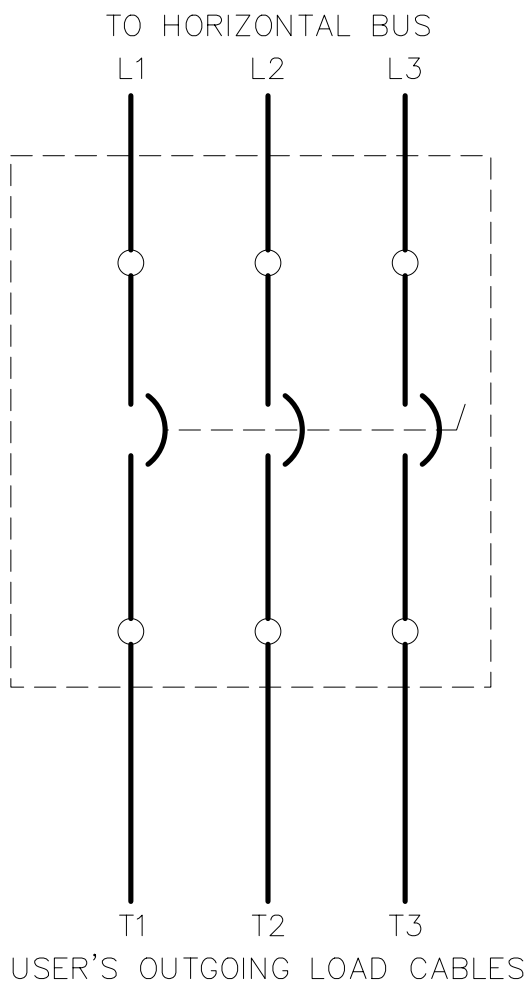
D

E

F

G

H



THE CIRCUIT IS TYPICAL OF A 150A BUL 2193F CIRCUIT BREAKER FEEDER UNIT
 A COMPLETE AND ACCURATE REPRESENTATION OF THE CIRCUIT DEPENDS ON THE
 SIZE AND OPTIONS ORDERED.

References		BUL. 2193F		
Revision		150 AMP "F" FRAME		
1	06/23/01			
Dimensions Apply Before Surface Treatment Dimensions in Inches Tolerances Unless Otherwise Specified 2 Place Decimal ±.02 3 Place Decimal ±.005 Angles ± 1		Dr.	Date	Sheet 1 Of 1
Refer. Book		Chkd.	Date	Dwg Size A
		Appd.	Date	2193FWB001