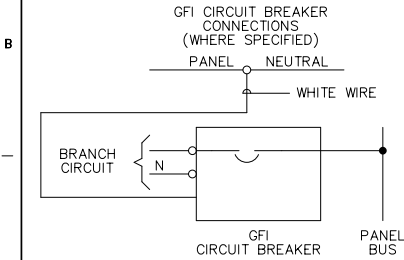


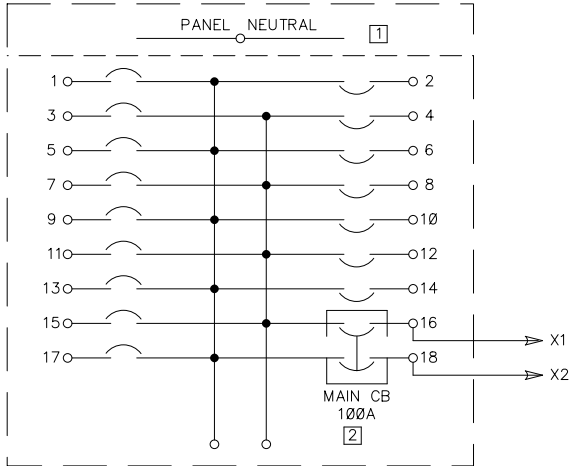
1 OTHER SIDE OF EACH CIRCUIT IS ALSO CONNECTED TO PANEL NEUTRAL.

2 TWO POLE PANEL CIRCUIT BREAKER IS REVERSE FED TO SERVE AS PANEL MAIN CIRCUIT BREAKER.

LIGHTING PANEL SUPPLIED WITH:  
 14 - 15A. - 1 POLE BREAKER(S)  
 1 - 20A. - 2 POLE BREAKER(S)



REFER TO MANUFACTURERS INSTRUCTIONS FOR INSTALLATION AND TESTING.



THIS LAYOUT IS TYPICAL OF A BUL 2193LE SINGLE PHASE, 3 WIRE, LIGHTING PANEL WITH 100A MAIN CIRCUIT BREAKER. ACTUAL LOCATION OF BRANCH BREAKERS IS DETERMINED BY MANUFACTURING.

- IT CONTAINS:
- 14 1-POLE 15A BRANCH BREAKERS
  - 1 2-POLE 20A BRANCH BREAKER

References		BUL. 2193LE SINGLE PHASE		
Revision		LIGHTING PANEL		
1	08/28/01	Release	Dimensions Apply Before Surface Treatment	Sheet 1 Of 1 Dwg Size C 2193LEWB005
			Dimensions in Inches Tolerances Unless Otherwise Specified	
			2 Place Decimal ± .02	
			3 Place Decimal ± .005	
Refer. Book			Angles ± 1	Dr. _____ Date _____ Chkd. _____ Date _____ Appd. _____ Date _____

Allen-Bradley Parts