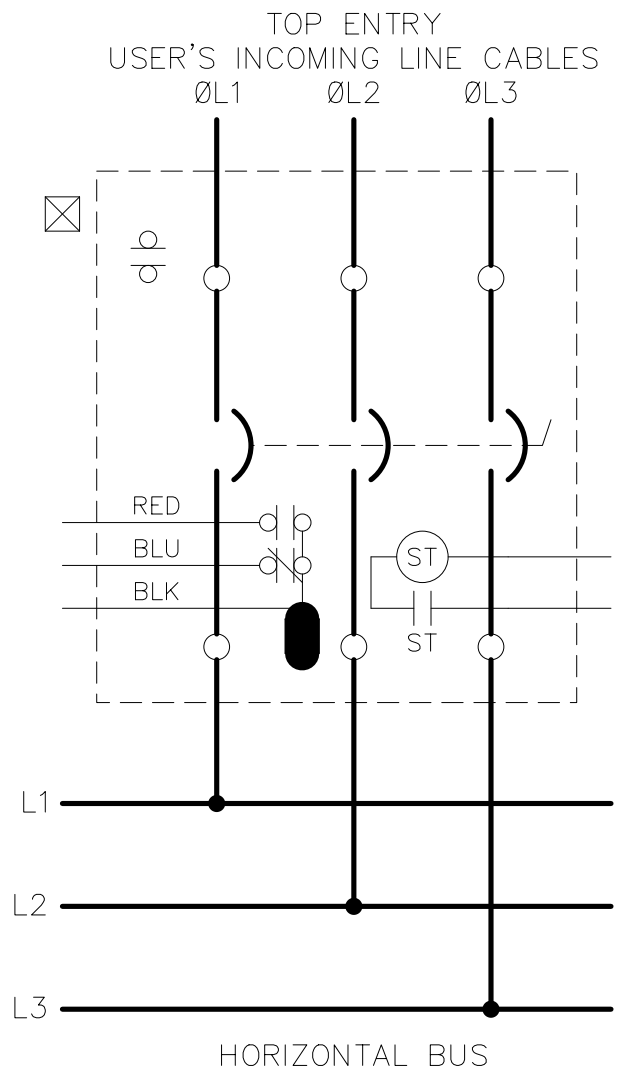


NOTES

A ☒ THIS IS AN EXTERNAL CIRCUIT BREAKER AUXILIARY AND SHOULD NOT BE USED FOR BREAKER TRIP INDICATION.

B ○ INTERNAL CB DEVICES SUPPLIED WITH UNMOUNTED CONNECTION BLOCKS.



F THE CIRCUIT IS TYPICAL OF AN 800A BUL 2193M CIRCUIT BREAKER MAIN UNIT OPTIONS:
 - 1 N.O. EXTERNAL AUXILIARY CONTACT ON THE CIRCUIT BREAKER
 - 1 N.O. INTERNAL AUXILIARY CONTACT IN THE CIRCUIT BREAKER
 - 1 N.C. INTERNAL AUXILIARY CONTACT IN THE CIRCUIT BREAKER
 - A SHUNT TRIP INTERNAL TO THE CIRCUIT BREAKER

G A COMPLETE AND ACCURATE REPRESENTATION OF THE CIRCUIT DEPENDS ON THE SIZE AND OPTIONS ORDERED.

References		BUL. 2193M		 Allen-Bradley Rockwell Automation
Revision		800 AMP "M" FRAME		
1	06/23/01	Dimensions Apply Before Surface Treatment Dimensions in Inches Tolerances Unless Otherwise Specified 2 Place Decimal ±.02 3 Place Decimal ±.005 Angles ± 1		Sheet 1 Of 1
Refer. Book		Dr.	Date	Dwg Size A
		Chkd.	Date	2193MWB005
		Appd.	Date	