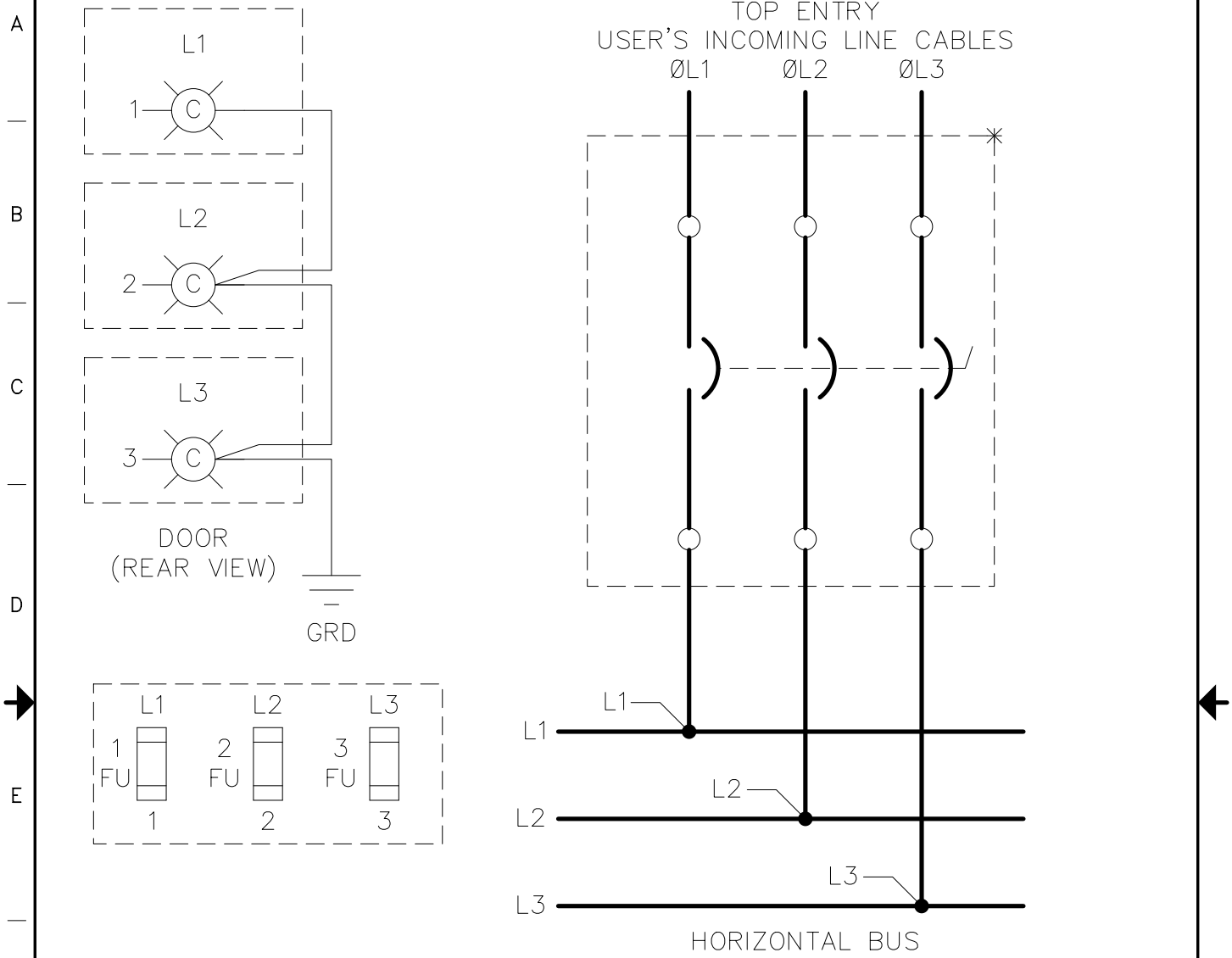


1 | 2 | 3 | 4 ↓ 5 | 6 | 7 | 8



THE CIRCUIT IS TYPICAL OF AN 800A BUL 2193M CIRCUIT BREAKER MAIN UNIT
 OPTIONS:
 - 1 GROUND DETECTION LIGHT PACKAGE

A COMPLETE AND ACCURATE REPRESENTATION OF THE CIRCUIT DEPENDS ON THE
 SIZE AND OPTIONS ORDERED.

References		BUL. 2193M		 Allen-Bradley Rockwell Automation
Revision		800 AMP "N" FRAME		
1	06/23/01	Dr.	Date	Sheet 1 Of 1
Refer. Book		Chkd.	Date	Dwg Size A
		Appd.	Date	2193MWB006