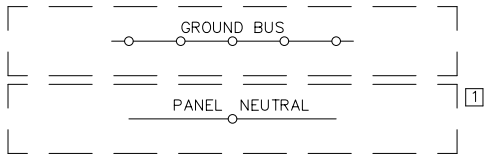
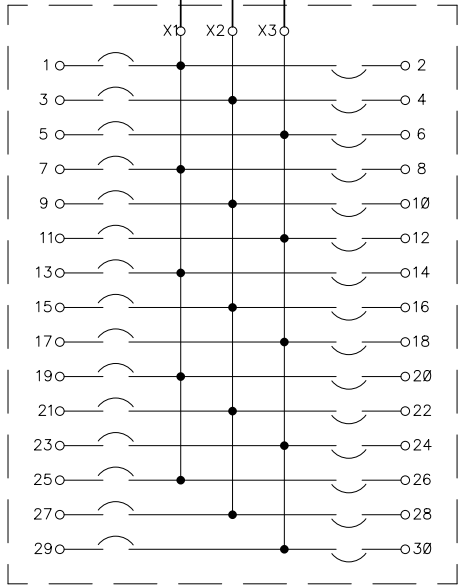
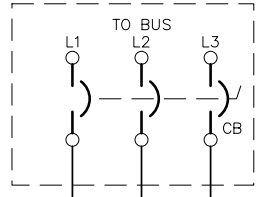


1 OTHER SIDE OF EACH CIRCUIT IS ALSO CONNECTED TO NEUTRAL.

PANELBOARD SUPPLIED WITH:
 22 - 20A. - 1 POLE BREAKER(S)
 1 - 20A. - 2 POLE BREAKER(S)
 2 - 30A. - 3 POLE BREAKER(S)



THIS LAYOUT IS TYPICAL OF A BUL 2193PP PLUG-IN PANELBOARD WITH 150A MAIN CIRCUIT BREAKER. ACTUAL LOCATION OF BRANCH BREAKERS IS DETERMINED BY MANUFACTURING.

- IT CONTAINS:
- 22 1-POLE 20A BRANCH BREAKERS
 - 1 2-POLE 20A BRANCH BREAKERS
 - 2 3-POLE 30A BRANCH BREAKERS

References		BUL. 2193PP 3-PHASE		
Revision		PLUG-IN PANELBOARD		
1	08/28/01	Dimensions Apply Before Surface Treatment		Dr.
		Dimensions in Inches Tolerances Unless Otherwise Specified		Date
		2 Place Decimal ± .02		Chkd.
		3 Place Decimal ± .005		Date
		Angles ± 1		Appd.
Refer. Book				Date

Sheet 1 Of 1
 Dwg Size C
 2193PPWB002

