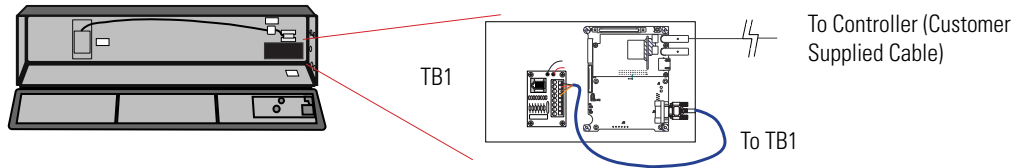


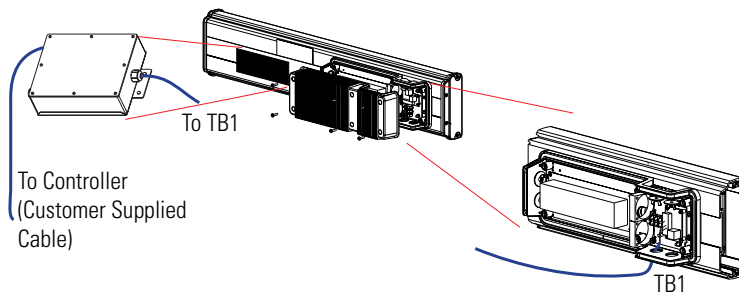


InView Quick Start

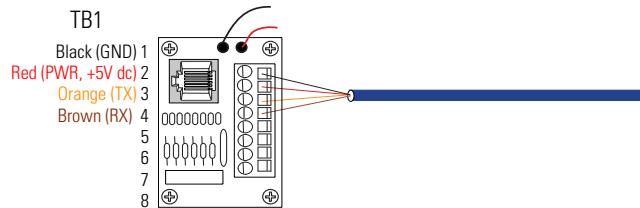
Installation 2706-P7x, 2706-P9x



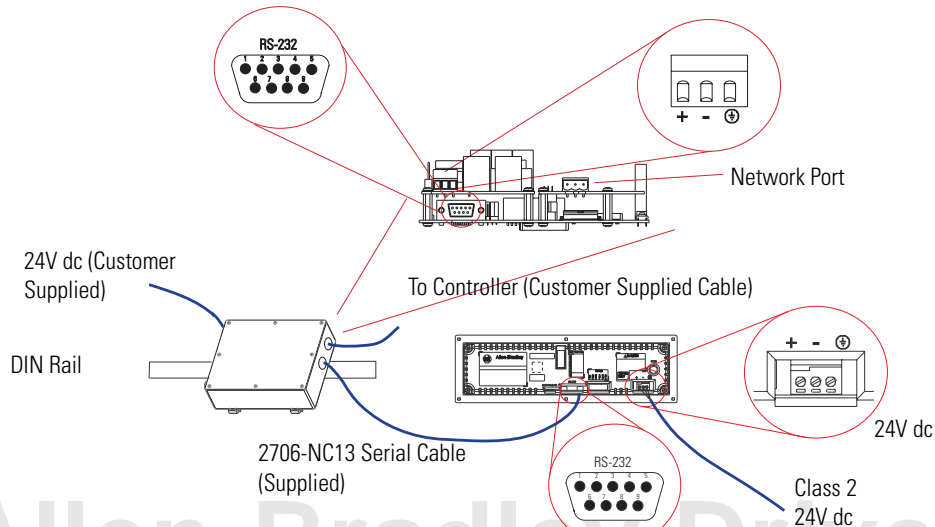
Installation 2706-P4x



TB1 Wiring

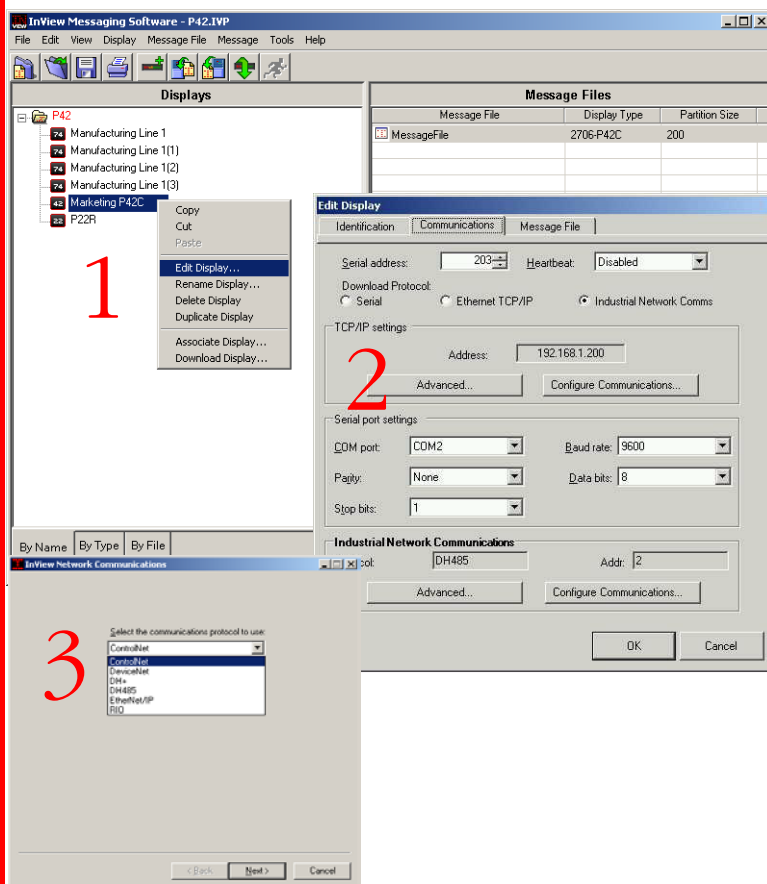


2706-P22R Installation and Wiring



Allen-Bradley Drives

Communication Utility Setup



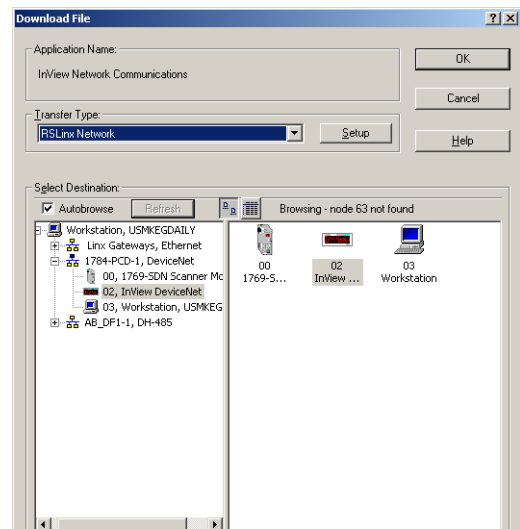
1. Select your display, right click, and select edit display.
2. From the display properties pop up, select the communications tab.
3. Choose the download protocol as "Network Comm's Module".
4. From the Industrial Communications Module frame, select configure communications.
5. Setup your communications tags.
6. Install your new EDS files for RSLinx (located on 2.2 disc).

TIP

Direct serial connection required to configure module for the first time. Network communications can be used for future changes.

Application Download

1. Create messaging application.
2. Select the message file to download and click on the download button.
3. Browse your RSLinx Network to the InView, and select OK.
4. The messages will now be downloaded over the network, to your InView.



www.rockwellautomation.com

Corporate Headquarters

Rockwell Automation, 777 East Wisconsin Avenue, Suite 1400, Milwaukee, WI, 53202-5302 USA, Tel: (1) 414.212.5200, Fax: (1) 414.212.5201

Headquarters for Allen-Bradley Products, Rockwell Software Products and Global Manufacturing Solutions

Americas: Rockwell Automation, 1201 South Second Street, Milwaukee, WI 53204-2496 USA, Tel: (1) 414.382.2000, Fax: (1) 414.382.4444

Europe: Rockwell Automation SA/NV, Vorstlaan/Boulevard du Souverain 36-BP 3A/B, 1170 Brussels, Belgium, Tel: (32) 2 663 0600, Fax: (32) 2 663 0640

Asia Pacific: Rockwell Automation, 27/F Citicorp Centre, 18 Whitfield Road, Causeway Bay, Hong Kong, Tel: (852) 2887 4788, Fax: (852) 2508 1846

Headquarters for Dodge and Reliance Electric Products

Americas: Rockwell Automation, 6040 Ponders Court, Greenville, SC 29615-4617 USA, Tel: (1) 864.297.4800, Fax: (1) 864.281.2433

Europe: Rockwell Automation, Brühlstraße 22, D-74834 Elztal-Dallau, Germany, Tel: (49) 6261 9410, Fax: (49) 6261 17741

Asia Pacific: Rockwell Automation, 55 Newton Road, #11-01/02 Revenue House, Singapore 307987, Tel: (65) 351 6723, Fax: (65) 355 1733

Publication 2706-QS001C-EN-P - August 2003

Supersedes Publication 2706-QS001B-EN-P - December 2002

PN 41061-300-01(3)

Copyright © 2003 Rockwell Automation, Inc. All rights reserved. Printed in the U.S.A.